

# 1

## Setting Up Your Monitor



The AppleVision 850 Display is a two-page, Trinitron® color monitor with a diagonal viewable image size of 19.0 inches. It supports a variety of resolutions and features advanced controls for accurate color rendering. The monitor works with Mac OS–based and Windows-based computers.

This chapter reviews important safety information and explains how to set up and connect your monitor to your computer. If you purchased a new computer along with your monitor, refer to the setup instructions that came with your computer in addition to the instructions in this manual.

### Important safety and cleaning instructions

**WARNING** Do not clean your monitor screen with a cleaner that contains alcohol or acetone. You might damage the screen. For more information about cleaning your monitor, see “Care and Cleaning” in Chapter 4.

For your own safety and that of your equipment, always take the following precautions.

Disconnect the monitor's power plug (by pulling the plug, not the cord) if any of the following conditions exists:

- the power cord or plug becomes frayed or otherwise damaged
- you spill something into the case
- your monitor is exposed to rain or any other excess moisture
- your monitor has been dropped or the case has been otherwise damaged
- you suspect that your monitor needs service or repair
- you want to clean the case (use only the recommended procedure described in “Care and Cleaning” in Chapter 4)

**IMPORTANT** The only way to disconnect power completely is to unplug the monitor's power cord. Make sure at least one end of the power cord is within easy reach so that you can unplug the monitor when you need to.

Be sure that you always:

- Keep your monitor away from sources of liquids, such as washbasins, bathtubs, shower stalls, beverages, and so on.
- Avoid setting anything on top of the monitor (such as a book or cup). The monitor could overheat and be damaged.
- Keep the monitor's vents free from obstruction.
- Protect your monitor from dampness or wet weather, such as rain, snow, and so on.
- Read all the installation instructions carefully before you plug your monitor into a power source.
- Keep these instructions handy for reference by you and others.
- Follow all instructions and warnings dealing with your system.

**WARNING** Never remove the cover from the monitor or you may come in contact with hazardous voltage levels capable of causing serious injury and possibly death.

**WARNING** Electrical equipment may be hazardous if misused. Operation of this product, or similar products, must always be supervised by an adult. Do not allow children access to the interior of any electrical product, and do not permit them to handle any cables.

## What about electromagnetic emissions?

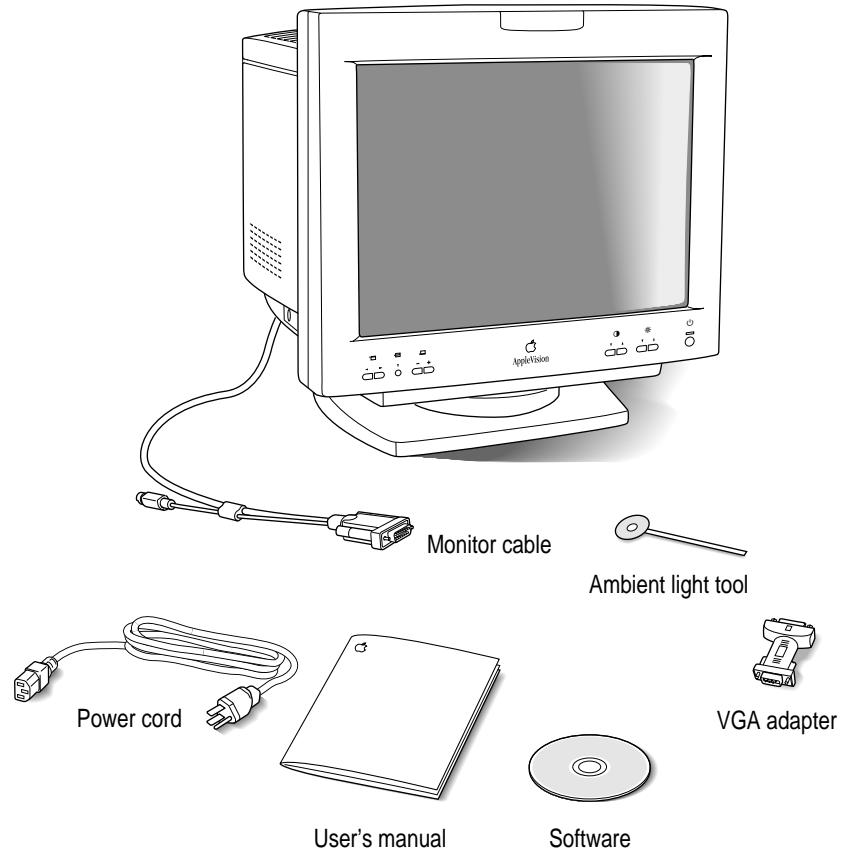
There has been recent public discussion of the possible health effects of prolonged exposure to extremely low frequency (ELF) and very low frequency (VLF) electromagnetic fields. Such fields are associated with electromagnetic sources such as television sets, electrical wiring, and some household appliances—as well as computer monitors.

Apple has reviewed scientific reports and sought the counsel of government regulatory agencies and respected health organizations. Based on the prevailing evidence and opinions, Apple believes that the electric and magnetic fields produced by computer monitors do not pose a health risk.

In response to those customers who wish to reduce their exposure to electromagnetic fields, Apple has lowered the emission levels of Apple monitors. We are also actively encouraging further scientific research so we can continue to promote the health and safety of our customers and employees.

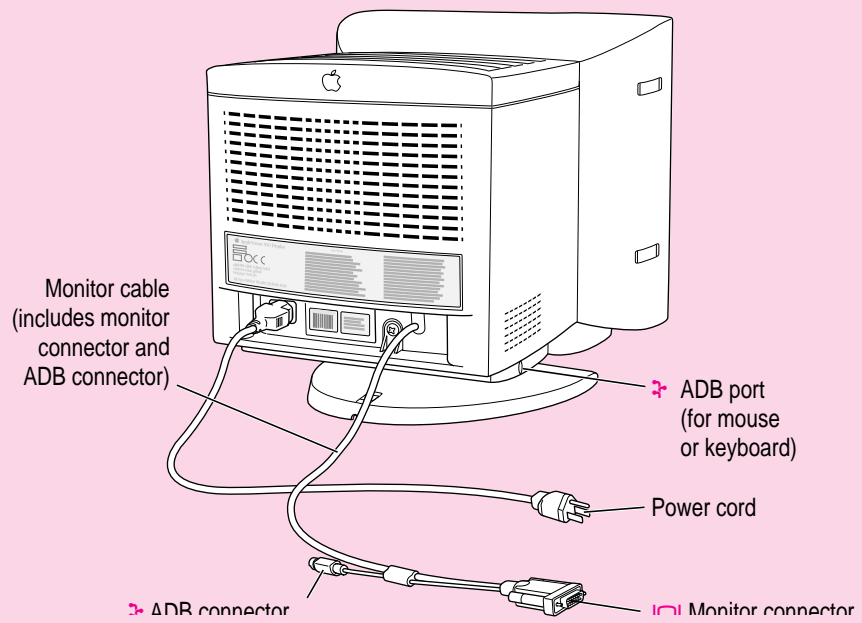
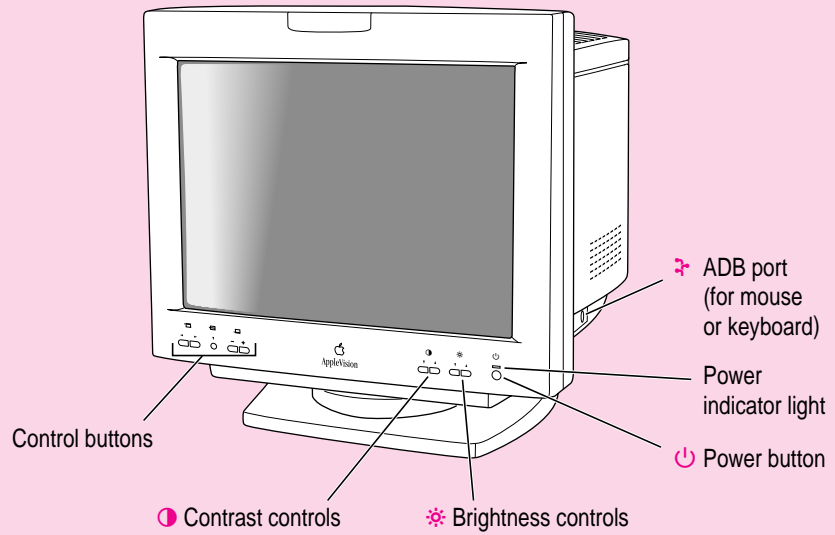
## Getting ready to set up your AppleVision 850 Display

Before you set up your monitor, make sure you have easy access to the following items that came with your monitor:



*Note:* Your power cord may look different from the one pictured.

## Your AppleVision 850 Display at a glance



## Do you need to install a video card?

The monitor is preadjusted and supports the following scan ranges:

- horizontal scan rate of 30–94 kilohertz
- vertical refresh rate of 48–120 hertz

In addition, the monitor works at the following VESA (Video Electronics Standards Association) standard modes:

| Resolution  | Vertical refresh rate (hertz) |
|-------------|-------------------------------|
| 640 x 480   | 60-85                         |
| 800 x 600   | 56-85                         |
| 1024 x 768  | 60-85                         |
| 1280 x 1024 | 75-85                         |
| 1600 x 1200 | 75                            |

The monitor also works at the following Macintosh standard modes:

| Resolution | Vertical refresh rate (hertz) |
|------------|-------------------------------|
| 832 x 624  | 75                            |
| 1152 x 870 | 75                            |

These are preassigned resolutions; your computer may support other resolutions within this range. See the manual that came with your computer or video card to determine which resolutions are supported.

For more information on factory-preadjusted settings and other technical information about your monitor, see Appendix B, “Technical Information.”

To use your monitor, you need compatible video circuitry built into your computer or a compatible video card installed in your computer.

*Note:* The Apple 8•24, Apple 8•24GC, and most NuBus™ video cards are not compatible with your monitor. In addition, some third-party PCI cards are not fully compatible with your monitor.

## Mac OS–based computers

If you are not sure whether your computer has appropriate built-in video capability, check with an Apple-authorized dealer or service provider. If your computer does not have the video capability necessary to use your monitor, you need to purchase a video card. (Video cards for Mac OS–based computers are available from an Apple-authorized dealer or service provider.)

Install the video card before you connect the monitor to your computer. To install a video card in one of the expansion slots inside your computer, see the manual that came with your computer or video card.

## Windows-based computers

Your monitor works with most Windows-based computers equipped with VGA (Video Graphics Array) or greater capability. You may need to install a video card to use the monitor with your computer. For more information, see the manuals that came with your computer.

If you don't use a preassigned resolution, you'll need to adjust screen geometry to match the new resolution. For more information, see "Adjusting Screen Geometry" in Chapter 3.

## Choosing a good location for your monitor

Here are some key factors to consider when determining where to place your monitor:

- Be sure that the desk or table can support the monitor's weight—approximately 67 pounds (30 kilograms).
- Make sure that the power cord and monitor cable will easily reach from the back of the monitor to your computer and wall outlet.
- The monitor cable should be unobstructed when you swivel and tilt the monitor, so allow at least 7 inches (17.5 cm) of clearance in the back. If you don't allow enough clearance, the monitor connector might be damaged when the cable hits an obstruction.

## Positioning the monitor

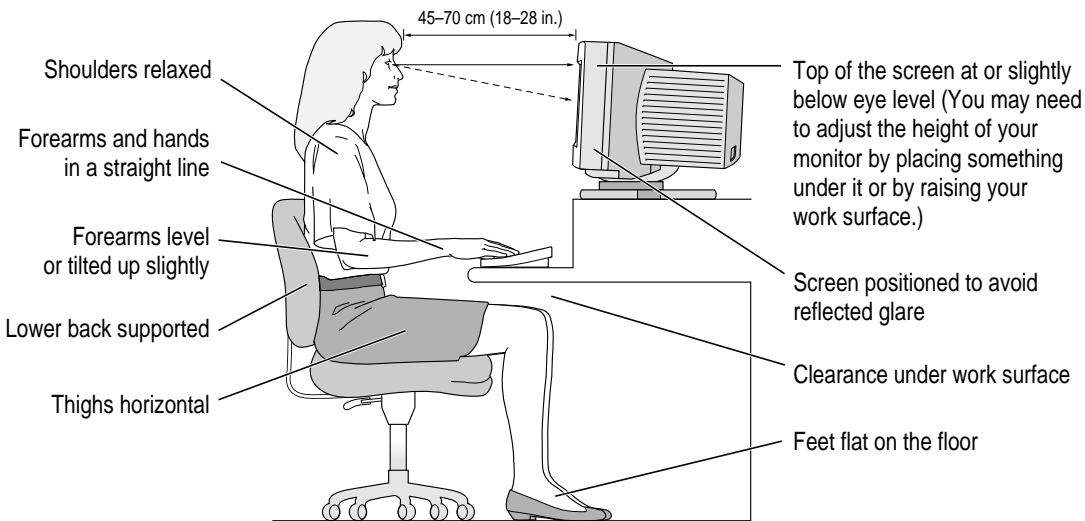
**IMPORTANT** When you unpack or move the monitor, don't set the monitor down at an angle; you might damage the monitor stand.

Once your monitor is in place on a desk or table, follow these steps:

- 1 Place the monitor so the screen faces the user.**
- 2 To slide the monitor, lift the front up slightly and push or pull in the direction you want.**
- 3 Adjust the viewing angle of the monitor by tilting it up or down and turning it left or right on its stand.**

Position the monitor so that when you use it, no bright light is behind the monitor or reflected on the screen. Your eyes should be about level with the top edge of the screen and between 18 and 28 inches (45 to 70 cm) away. Take occasional breaks when using your computer to focus your eyes on a distant object.

For your greatest comfort, use the following illustration to help you in positioning your monitor.





*Note:* After you set up and configure the monitor, adjust the image and colors on the screen to match your environment. For example, in a bright room, contrast is usually best set at maximum; in a dim room, lower contrast is usually more comfortable. See Chapter 2, “Installing and Using AppleVision Software,” for more information about making screen and color adjustments using AppleVision software for Mac OS–based computers. See Chapter 3, “Using Your Monitor With Windows-Based Computers,” for information about onscreen controls for adjusting screen image and color for Windows-based computers.

## Connecting the monitor to your computer

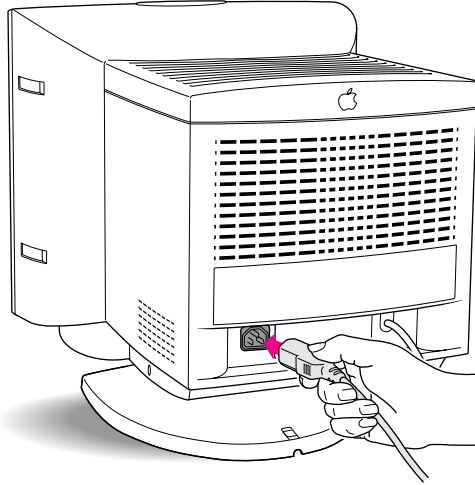
Follow these steps to connect your AppleVision 850 Display to your computer.

**IMPORTANT** Before you connect any cords or cables, make sure your computer is turned off.

**WARNING** This equipment is intended to be electrically grounded. Your monitor may be equipped with a three-wire grounding plug—a plug that has a third (grounding) pin. This plug will fit only a grounded AC outlet. This is a safety feature. If you are unable to insert the plug into the outlet because the outlet is not grounded, contact a licensed electrician to replace the outlet with a properly grounded outlet. Do not defeat the purpose of the grounding plug!

## Connecting the power cord

- 1 Connect the socket end of the power cord to the power cord receptacle on the back of the monitor.



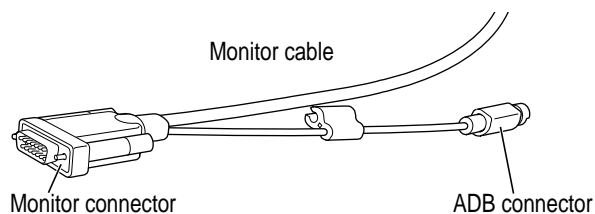
- 2 Plug the other end of the power cord into a grounded outlet or power strip.

*Note:* You may have a power jumper cord instead of a power wall cord. In this case, plug the power jumper cord into the power socket on the back of your computer.

## Connecting the monitor cable to a Mac OS–based computer

### Connecting to a standard monitor port

To realize the full capability of your monitor, you must connect it to the video *and* ADB ports on your computer. The monitor cable is a split cable with two connectors, one for video and one for the Apple Desktop Bus (ADB).



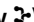
- 1 **Plug the monitor connector on the monitor cable into the monitor port (marked by ) on the back of your computer.**

If your computer has more than one monitor port, see the manual that came with your computer for information on choosing the correct port.

If you installed a video card in your computer, connect the monitor connector on the monitor cable to the video card's port. For more information about installing video cards, see the manual that came with your computer or video card.

- 2 **Tighten the thumbscrews on the connection.**



You can prevent bad connections and accidental damage by tightening the thumbscrews. Do not overtighten the thumbscrews; you might strip the threads.


- 3 **Plug the ADB connector on the monitor cable into an ADB port (marked by ) on the back of your computer.**

Make sure the ADB connector is attached firmly.

**IMPORTANT** The ADB connector is not optional; it's needed for your Mac OS–based computer to work correctly with your monitor. If not connected properly, extended resolutions and AppleVision software controls will not be available.

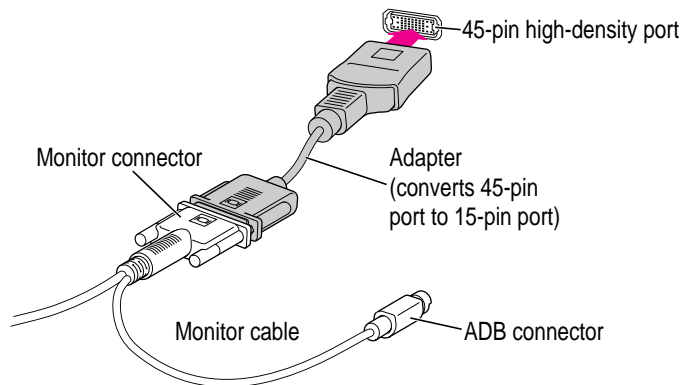
If you have only one ADB port on the back of your computer and you're already using it for your keyboard and mouse, unplug the keyboard and mouse and connect them directly to your AppleVision monitor. For more information, see “Connecting a Mac OS–Based Keyboard and Mouse to Your Monitor” later in this chapter.

**WARNING** Make sure you don't plug the ADB connector into an S-video port (marked by  or ) by mistake. The ports are the same size, and it's easy to mistake one for the other. It may cause electrical damage to your computer or monitor.

**IMPORTANT** When connecting ADB cables, be sure to align the symbol  on the connector with the same symbol on the port. If you force a connector the wrong way, you will damage it.

### Connecting the monitor cable to various video connectors

To connect the monitor to a high-density port (45-pin port) instead of a standard monitor port (15-pin port), you need to use an adapter. This adapter is usually provided with your computer. If you don't have one, you can purchase an adapter (Apple part number M2681LL/A) from an Apple-authorized dealer.



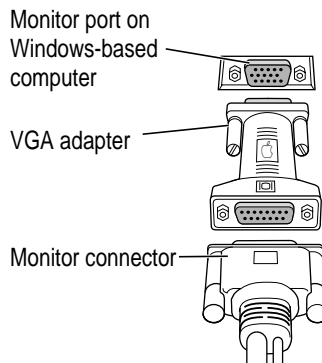
Other video connectors, such as PowerBook adapters, can also connect to your monitor port with special adapters. For more information, see the manual that came with your computer.

*Note:* If your Mac OS–based computer came with a VGA adapter for connecting monitors, use it instead of the one shipped with your AppleVision monitor.

## Connecting the monitor cable to a Windows-based computer

Although the monitor cable is a split cable with two connectors, you will use only the monitor connector with your computer.

- 1 Connect the VGA adapter to the monitor connector (marked by ) on the monitor cable.**



- 2 Tighten the thumbscrews on the connection.**

You can prevent bad connections and accidental damage by tightening the thumbscrews. Do not overtighten the thumbscrews; you might strip the threads.

- 3 Connect the VGA adapter end of the monitor cable to the monitor port on the back of your computer.**

If you installed a video card in your computer, connect the monitor cable (with the VGA adapter attached to it) to the video card's port. For more information about installing video cards, see the manual that came with your computer or video card.

- 4 Tighten the thumbscrews on the connection.**
- 5 Leave the ADB connector on the monitor cable unplugged.**

The ADB connector is for Mac OS–based computers only. Use the clip on the monitor cable to move the ADB connector out of the way.

## Connecting a Mac OS–based computer keyboard and mouse to your monitor

If you wish, you can plug your keyboard and mouse directly into the monitor, rather than into the back of your computer. There is one ADB port on each side of the monitor for your keyboard and mouse (or any other ADB device).

**IMPORTANT** Always be sure your computer is shut down before you plug in or disconnect ADB cables.

- 1 Make sure the ADB connector on the monitor cable is plugged into an ADB port (marked by ⌘) on the back of your computer.**

**IMPORTANT** The ADB connector is not optional; it's needed for your Mac OS–based computer to work correctly with your monitor. If not connected properly, extended resolutions and AppleVision software controls will not be available.

For more information, see “Connecting the Monitor Cable to a Mac OS–Based Computer” earlier in this chapter.

- 2 If necessary, unplug the keyboard or mouse cable from the ADB connector on the back of your computer.**
- 3 Decide how you want to connect the keyboard and mouse.**

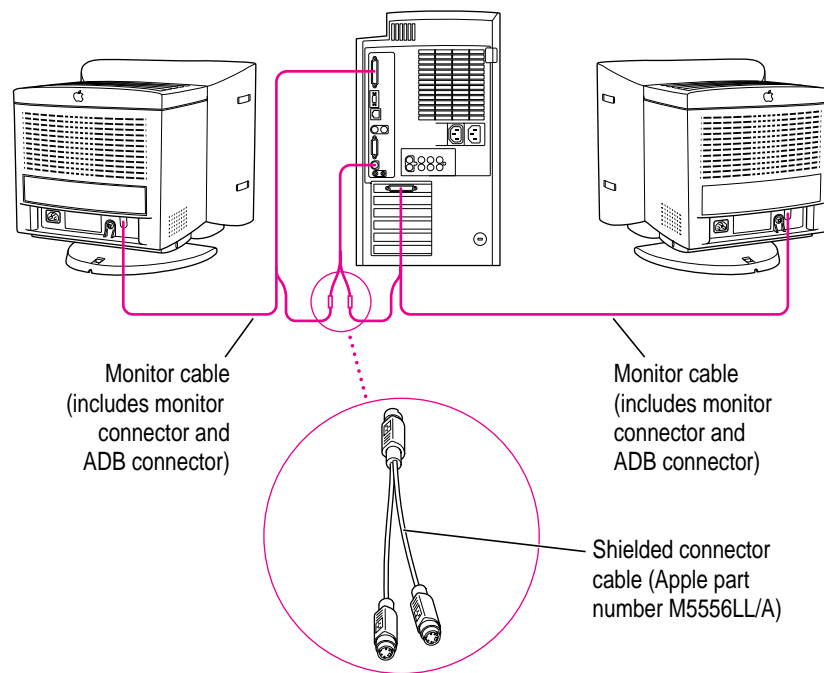
For example, you can connect your mouse cable to your keyboard and then connect the keyboard to one of the ADB ports (marked by ⌘) on either side of the monitor stand. Or, if you prefer, you can plug your keyboard and mouse cables into the ADB ports (marked by ⌘) on either side of the monitor stand.

- 4 Connect your keyboard and mouse cables to the monitor's ADB ports (marked by ⌘) according to your preference.**

## Using more than one monitor

If your computer has expansion slots, you can use your monitor with one or more additional monitors connected to your computer. You may need a video card for each additional monitor you are using. See the manual that came with your computer for more information.

If your Mac OS–based computer has one ADB port, you can still connect two AppleVision monitors. You'll need a special cable to split the ADB connector cable into two parts.

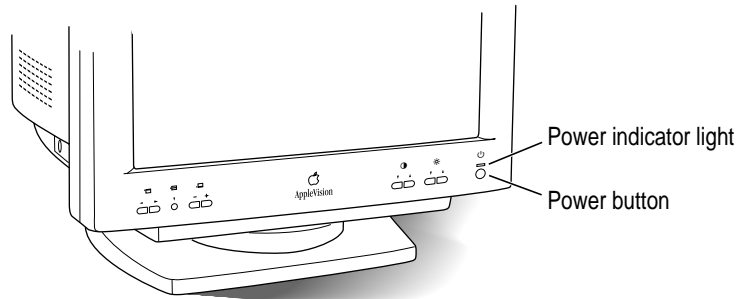


**IMPORTANT** Make sure you use an Apple *shielded* connector cable. Most third-party ADB splitter cables are not shielded and will not work properly with your AppleVision monitor. (You may experience more radio interference with an unshielded connector cable.)

## Turning the monitor on

To turn on the monitor for the first time:

- 1 Plug in the computer's power cord.**
- 2 Press the power button on the monitor.**



If you plug your monitor directly into your computer, no power indicator light goes on until you start up your computer. If you plug your monitor into a wall outlet, the monitor's amber power indicator light goes on. When you start up your computer, the indicator light turns green.

- 3 Start up your computer and wait a few seconds.**

The green power indicator light goes on. If the power indicator light does not go on, press the monitor's power button again. If this doesn't work, make sure you've connected the monitor cable and power cord properly. (See "Connecting the Monitor to Your Computer" earlier in this chapter.) Also, make sure your computer is turned on and no energy-saving or screen-saving features are active. The power indicator light on the monitor is amber when an energy-saving program is on.

For Mac OS–based computers, you must install the AppleVision software that came with your monitor *before* adjusting the screen with the front panel buttons and using other monitor features. For more information on AppleVision software installation and Energy Saver, see Chapter 2, "Installing and Using AppleVision Software."



**WARNING** Before making any screen or sound adjustments, install the AppleVision software on your Mac OS–based computer. Using software other than the new AppleVision software that came with your monitor could damage your monitor.

## Using the monitor with Windows-based computers

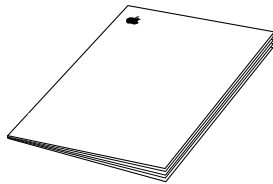
In most cases, once you turn on the monitor, you will not have to make any adjustments to the screen image. If necessary, you can adjust or fine-tune the image to suit your personal preference. For more information about adjusting the screen image, see Chapter 3, “Using Your Monitor With Windows-Based Computers.”

To change resolutions on your monitor, see the manuals that came with your operating software or video card.

*Note:* The *AppleVision Software* CD-ROM disc includes AppleVision setup information for Windows 95 users. See Chapter 3, “Using Your Monitor With Windows-Based Computers,” for installation instructions.

## Finding answers

When you have questions about using your monitor, there are several places you can look for answers.



### This manual

Use this manual to set up your monitor, install AppleVision software for Mac OS–based computers, install AppleVision setup information and use onscreen controls for Windows-based computers, and find solutions to common problems.



### Apple Guide for Mac OS–based computers

If you need help or experience a problem while using the AppleVision software, open the Guide (Ⓜ) menu and choose Macintosh (or Mac OS) Guide or Monitors & Sound Guide. The Guide menu is the main source for information about the AppleVision software and your Mac OS–based computer. See Chapter 2 for more information.



Monitors & Sound doc.pdf

### AppleVision software instructions for System 7.1 users

If you're using System 7.1, Apple Guide isn't available. Instead, open the Monitors & Sound doc.pdf file using Adobe Acrobat Reader to view AppleVision software instructions. See Chapter 2 for more information.

## Obtaining online support and updated Apple software

Apple technical support information and software updates are available from many online services. You can get troubleshooting and other important information by using these services. You can also get the latest versions of Apple software, including most printer drivers, system enablers, and updates to utilities and networking and communications software.

Support information and Apple software updates are available via Apple's World Wide Web sites:

- <http://www.info.apple.com>
- <http://www.support.apple.com>

## What to do next

### Mac OS–based computers

Go to the next chapter for information about installing and using AppleVision software.

### Windows-based computers

Go to Chapter 3, “Using Your Monitor With Windows-Based Computers,” for information on installing AppleVision setup information and using the control buttons to open onscreen menus for screen image adjustments.



# 2

## Installing and Using AppleVision Software



This chapter explains how to install AppleVision software on your Mac OS–based computer and provides an overview of software features. If you’re using the monitor with a Windows-based computer, see Chapter 3, “Using Your Monitor With Windows-Based Computers.”

### Installing AppleVision software

To install AppleVision software on a Mac OS–based computer, follow these steps:

**1 Make sure you have System 7.1 or later installed.**

You need a Mac OS–based computer running System 7.1 or later to use the software. If you don’t have System 7.1 or later, contact an Apple-authorized dealer or service provider.

*Note:* You must connect your monitor to a computer with a 68040 processor or PowerPC™. The monitor does not work with computers that have been upgraded to a 68040 processor from earlier processors, such as a 68030 processor.

**2 Insert the *AppleVision Software* CD-ROM disc into the computer’s CD-ROM drive.**

The CD icon appears on the desktop.

*Note:* If you don’t have a CD-ROM disc drive, you can order a set of floppy disks of the AppleVision software. See the service and support information that came with your monitor for more information.

- 3 Double-click the CD icon to see what's on the CD-ROM disc.**

The AppleVision Software CD window opens.

- 4 Double-click the folder that contains your language preference.**

For example, if you'd like to install AppleVision software in English, double-click the English folder.

- 5 Double-click the AppleVision Software folder.**

- 6 Double-click the AppleVision Read Me file and read the document.**

The AppleVision Read Me file contains important information about the applications included with your AppleVision software. It also provides a list of installed software for your reference.

- 7 Choose Quit from the File menu when you're finished reading.**

- 8 Double-click the AppleVision Installer icon to start the Installer program.**

A welcome screen appears.

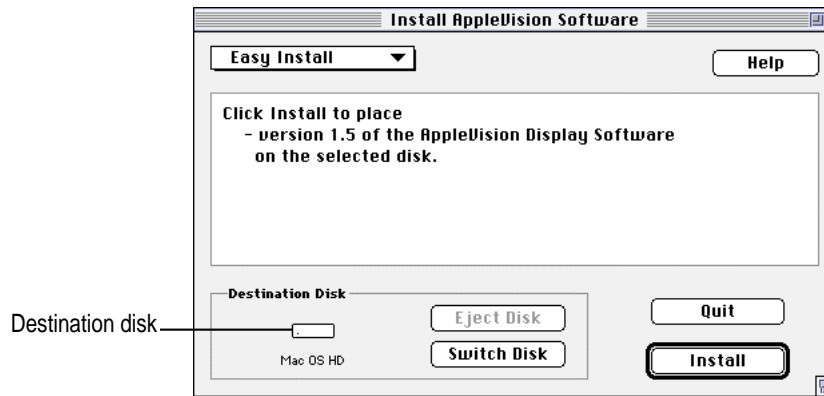
- 9 Click Continue.**

The software license agreement dialog box appears.

*Note:* Be sure you're acting within the terms of the software license agreement before you agree to install this software on your computer. The license agreement specifies how many copies of the program you can make for yourself and others.

- 10 Click Agree once you've read and agreed to the terms in the document.

The Install AppleVision Software dialog box appears.



- 11 Make sure the destination disk named is the startup disk of your computer. If it isn't, click Switch Disk until you see the right name.
- 12 Select Easy Install; then, click Install.

The Installer takes a few minutes to calculate what needs to be done and then begins to copy files. If you are running other applications, a message appears telling you to quit any open applications. Click Continue to quit the applications and continue with the installation.

*Note:* Make sure you use the Installer to install the software. Do not install the software by dragging files.

- 13 Follow the instructions on the screen until the installation is complete.

**IMPORTANT** The Installer checks to make sure you have the system software you need to use the monitor. If you're missing anything, a message tells you what you need. You won't be able to install the software until you correct the problem. If a dialog box says you don't have the correct system software, you can purchase a new version from an Apple-authorized dealer.

After the installation, the Installer tells you to restart your computer.

- 14 Click Restart.

The software is now installed and the monitor is ready for use.

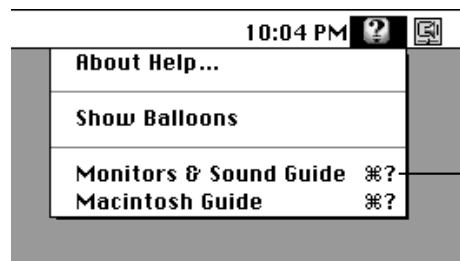
**IMPORTANT** If you reinstall system software on your computer, you must reinstall the AppleVision software.

*Note:* If you press a control button under the screen on the left front of your monitor and do not see the Monitors & Sound control panel, you probably haven't set up your AppleVision monitor correctly. Make sure the ADB connector on the monitor cable is connected directly to your computer's ADB port. See Chapter 1, "Setting Up Your Monitor," for more information.

## Learning about AppleVision software with System 7.5 or later

This section explains how to open Monitors & Sound Guide for information about using AppleVision software with your monitor. If you're using System 7.1, see the next section, "Learning About AppleVision Software With System 7.1."

The Monitors & Sound Guide is your main source of information about AppleVision software. The Guide menu is identified by a question mark (Ⓜ) in the upper-right corner of the screen.



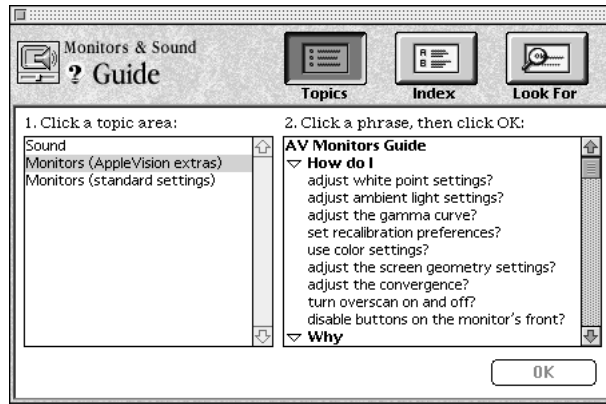
Open Monitors & Sound Guide when the Monitors & Sound control panel is active to get onscreen help on AppleVision software.

To open Monitors & Sound Guide, make sure your Monitors & Sound control panel is active. Then, click the Guide (Ⓜ) icon on the top-right corner of the control panel to open Monitors & Sound Guide or choose Monitors & Sound Guide in the Guide (Ⓜ) menu at the top of your screen.

Macintosh (or Mac OS) Guide also contains the same information about the AppleVision software as well as other information about using your computer. Macintosh Guide is available while you're in the Finder.



Monitors & Sound Guide provides onscreen help on how to use AppleVision software.



Monitors & Sound Guide provides information about the following topics: sound, monitors (AppleVision extras), monitors (standard settings), and troubleshooting. Click the Topics button to open these topic areas and choose a topic. Then, select a question in the list and click OK to open detailed instructions.

## Tips for using Monitors & Sound Guide

### When you can't find the information you need

- In searching for help topics, use all three buttons at the top of Guide's initial window: Topics, Index, and Look For.
- If you're in a series of steps and want to return to the list of help topics, click the button marked Topics in the Guide window.

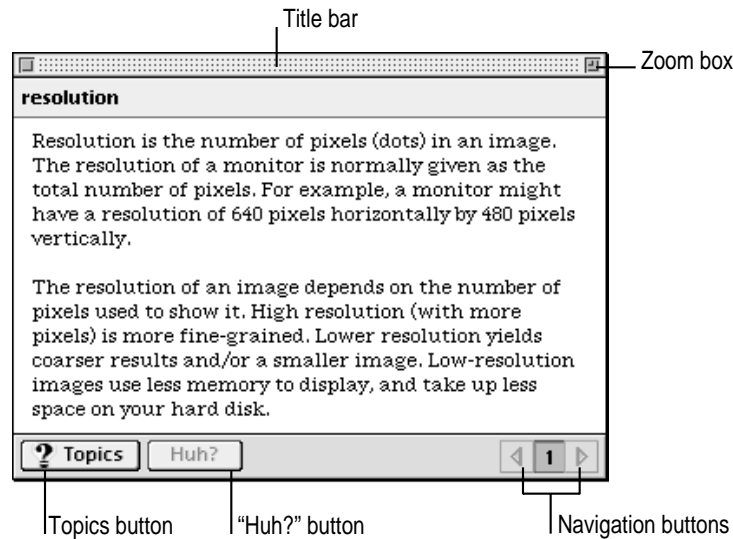
### When you can't see what's behind the Guide window

Guide windows stay in front of other windows on the screen so that your instructions are never covered.

- Drag a Guide window by its title bar to move it out of the way.
- Click the zoom box once to shrink a Guide window. (To expand the window, click the zoom box a second time.)

### When you need more information about an instruction or term

- Click the “Huh?” button if it is available.
- If an unfamiliar word is underlined, click it to get a definition.



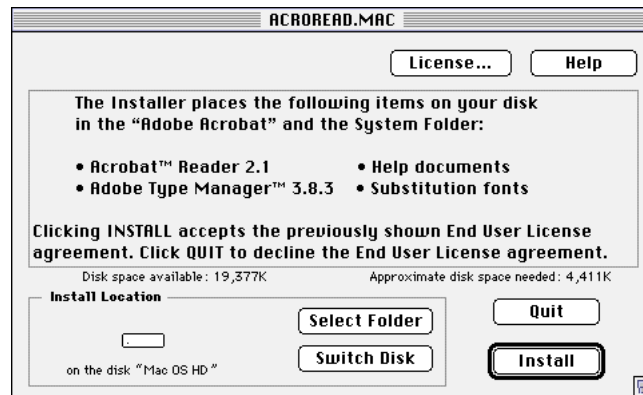
## Learning about AppleVision software with System 7.1

Because Monitors & Sound Guide is not available to System 7.1 users, AppleVision software instructions are provided onscreen in a pdf file format. To view the instructions, you must first install Adobe Acrobat Reader (included on the *AppleVision Software* CD-ROM disc).

To install Adobe Acrobat Reader, follow these steps:

- 1 Insert the *AppleVision Software* CD-ROM disc into the computer's CD-ROM drive.
- 2 If necessary, double-click the CD icon to open the AppleVision Software CD window.
- 3 Double-click the folder that contains your language preference.
- 4 Double-click the Acrobat Reader folder.
- 5 Double-click the ACROREAD.MAC icon to start the Installer program.
- 6 Click Continue in the first dialog box.

- 7 After you've read and agreed to the terms and conditions of the license agreement, click **Continue**.
- 8 Make sure that the **Install Location** is the startup disk of your computer; then click **Install**.



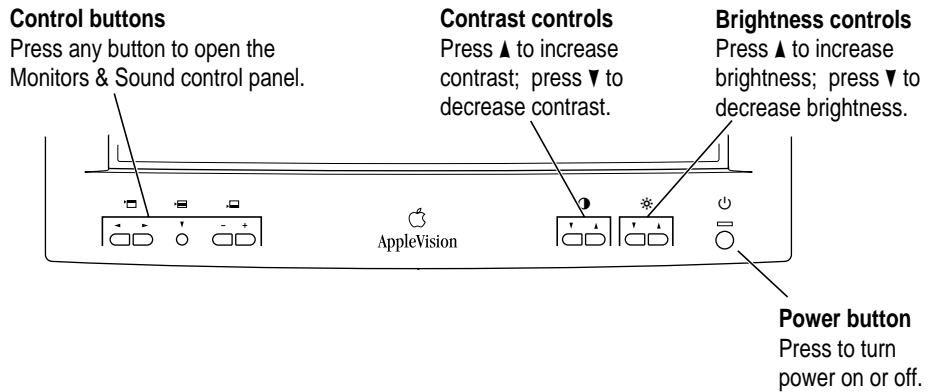
- 9 When installation is complete, click **Restart** in the dialog box that appears.  
You're now ready to use Acrobat Reader to view AppleVision software instructions.
- 10 Go to the **Apple Extras** folder on your hard disk and double-click the folder; then double-click the **AppleVision Extras** folder to view its contents.

Double-click **Monitors & Sound doc.pdf** to view AppleVision software instructions using Acrobat Reader.

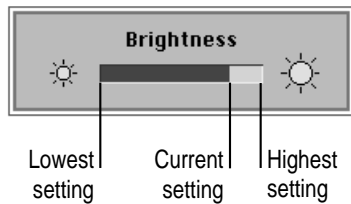
For more information about Adobe Acrobat Reader, see the **ReadMe-Reader2.1** file in the Acrobat Reader folder installed on your hard disk.

## Screen controls at a glance

The buttons on the front of your monitor provide a quick way to adjust the screen image. In most cases, you won't need to adjust the screen image unless you make changes to screen resolution.



The Contrast and Brightness controls have an onscreen indicator that appears when you press a button on the front of your monitor. For example, pressing a Brightness control displays the Brightness indicator.



When you make an adjustment, the indicator bar moves to show the current setting. When you've finished making adjustments, the indicator disappears automatically.

## About the Monitors & Sound control panel

The Monitors & Sound control panel allows you to control the way your computer displays images and processes sound. Because different computers have different capabilities, Monitors & Sound automatically adjusts itself based on the video and sound capabilities of the computer and monitor you're using. That's why the Monitors & Sound control panel shown in this manual may appear slightly different on your computer.

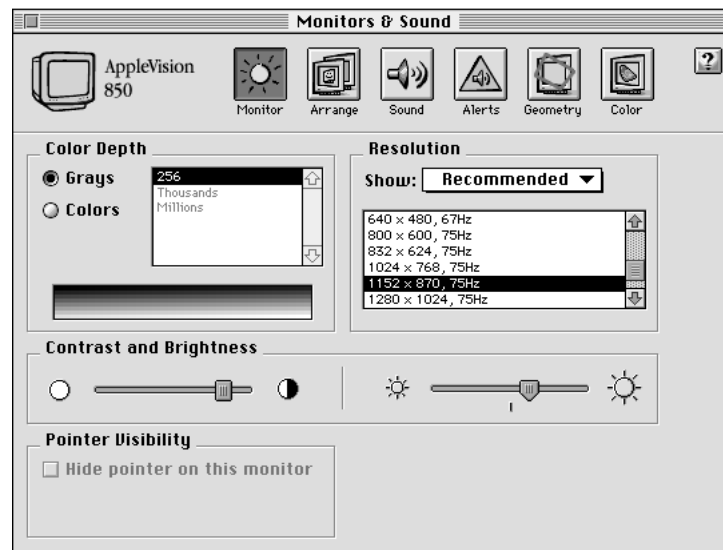
If you have more than one monitor attached to your computer, a separate Monitors & Sound control panel will appear on each one, allowing you to customize your settings for each monitor separately.

## Opening Monitors & Sound

There are two ways to open the Monitors & Sound control panel:







- Choose Control Panels from the Apple () menu; then select Monitors & Sound.
- Press one of the control buttons under the screen on the left front of your AppleVision monitor.

After a moment, the Monitors & Sound control panel appears on your screen.



## Monitors & Sound buttons at a glance

The large buttons across the top of the Monitors & Sound control panel are used to select different options. See *Monitors & Sound Guide* or the *Monitors & Sound doc.pdf* file for detailed information on using the AppleVision software.

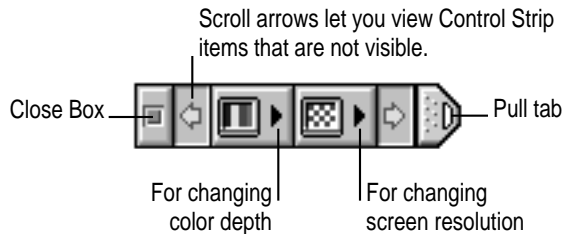
| Button  | Description  |
|---|--|
|    | Use the <b>Monitor</b> button to adjust color depth, resolution, contrast, and brightness settings.  |
|    | Use the <b>Arrange</b> button to configure more than one monitor. This button appears on your screen if you have more than one video port on your computer.  |
|    | Use the <b>Sound</b> button to adjust your computer system's sound. You can also set the volume and balance for speakers attached to your computer, choose sound input devices such as a microphone or CD player, and select sound output quality. |
|  | Use the <b>Alerts</b> button to change your computer's alert sound.  |
|  | Use the <b>Geometry</b> button to change the image options for your monitor. You can change the size and shape of the screen image, adjust convergence, and turn overscan on and off.  |
|  | Use the <b>Color</b> button to change color calibration, gamma curve, white point, and ambient light settings, and to import or export a ColorSync profile. (For more information on ColorSync, see Appendix A.)                                   |

## Tips for using AppleVision software

- For best results, recalibrate your monitor after changing the color settings. For example, color adjustment changes don't take effect until you click Recalibrate. You can choose to have your monitor recalibrate automatically whenever you change the settings. Click the Color button. Then click Preferences. After selecting your recalibration preferences, click Save.
- To use the default settings shipped with your monitor, click the Geometry button. When the Geometry window opens, click the Factory Settings option. To use the color default settings, click the Color button. When the Color window opens, double-click Factory Defaults in the Saved Settings menu.
- Red, green, and blue signals in your monitor overlay, or converge, to create the colors you see on your screen. If the convergence is not set properly, images or text on your screen may appear blurred, or you may get a “rainbow” effect in which several colors form the edges of images on the screen. If you move your monitor to another location, you may need to change the convergence to get a clear, distinct screen image. To adjust convergence, click the Convergence button in the Geometry window.
- When Overscan is on, you may not be able to choose commands from the menus at the top of your monitor. If this occurs, you can't use a menu to open the Monitors & Sound control panel and turn overscan off. Instead, open Monitors & Sound by pressing a Control button on the front of your monitor.
- The ColorSync profile included with your monitor works with other device profiles to ensure the closest match possible between monitor color and printed color. See “Using ColorSync” in Appendix A for more information. To refine the color profile, you can use the Color window in Monitors & Sound to further adjust for your specific monitor and lighting conditions.
- To correct for ambient light conditions, the color depth on your monitor must be set to “Millions of Colors.” If you can't set color depth to “Millions of Colors,” try changing to a lower screen resolution. Use the Color button to open color depth and resolution settings.

## Using the Control Strip

When you turn on your monitor, a small pull tab appears in the lower-left corner of the screen. Click once on the pull tab to open it. This is called the *Control Strip*.



The Control Strip is a quick and easy way to make changes to the features you use most on your computer, such as screen resolution and color depth.

The Control Strip may look slightly different depending on the options on your computer. Move the pointer over the item you want to use and hold down the mouse button. A pop-up menu appears with a selection of choices.

Hold down the Option key and drag the Control Strip up or down the left or right side of the desktop. Release the Option key and mouse button when the Control Strip is located where you want it.

## Using DigitalColor Meter

DigitalColor Meter and your monitor work together to identify colors on your screen based on the standard color gamuts defined by the Commission on Illumination (CIE).

DigitalColor Meter can also identify colors using the Pantone® system. Pantone is a color-matching system used to specify ink colors for high-end printers. Pantone colors are described using their printing ink formulation, which is identified by a specific Pantone number. DigitalColor Meter performs color matching and provides Pantone numbers for coated (CVC), uncoated (UVC), and process (CVP) color samples. Use the Pantone numbers when you have your work professionally printed to ensure that the printer will use colors similar to those displayed on your screen.

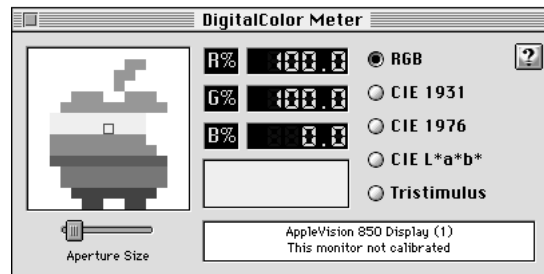


Finally, you can use DigitalColor Meter to identify the RGB (red, green, blue) values your computer uses to create colors.

## Opening DigitalColor Meter

Choose DigitalColor Meter from the Apple () menu. (It was installed with your AppleVision software.)

When you launch DigitalColor Meter, its window opens on your monitor.

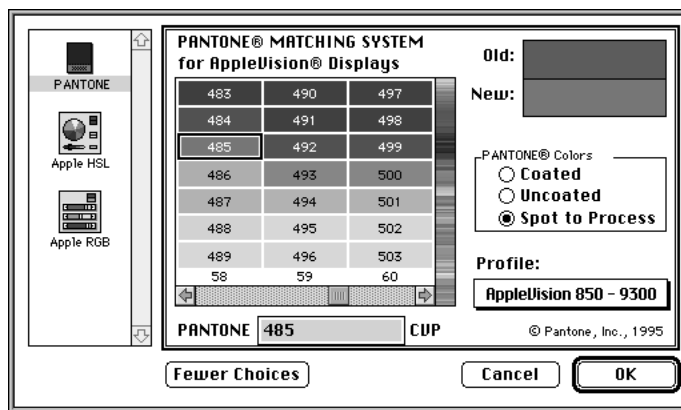


See DigitalColor Meter Guide (located in the Guide [?] menu when the DigitalColor Meter application is active) or the Monitors & Sound doc.pdf file for more information on how to use DigitalColor Meter.

## Specifying colors using the Pantone Matching System

In some application programs, you can use Apple Color Picker to specify Pantone colors. The Pantone Color Picker extension is automatically installed along with the rest of the AppleVision software.

For example, in a variety of applications, Apple Color Picker is automatically launched when a new color needs to be specified. Often, a menu of several different color systems is available to choose from. When you select Pantone, a dialog box appears.



By selecting Pantone matching colors, you are assured of a close match between what you see on your monitor and the printed version. Pantone Color Picker may look different on your computer.

If Pantone colors are not available in the Color Picker menu, click the More Choices button; then select Pantone.

## Conserving energy

Use the Energy Saver control panel to tell the monitor whether to conserve energy after a specified period of inactivity.

You can use the control panel with your AppleVision monitor or any other Apple monitor that complies with the United States Environmental Protection Agency's Energy Star program. (Look for the EPA Energy Star logo on the monitor box.)

*Note:* When you save energy, you save natural resources and reduce pollution. Although the AppleVision 850 Display includes features that automatically save energy, you can increase the energy savings by turning the monitor off if you won't be using it for awhile—for example, overnight or over the weekend.

## Setting up Energy Saver

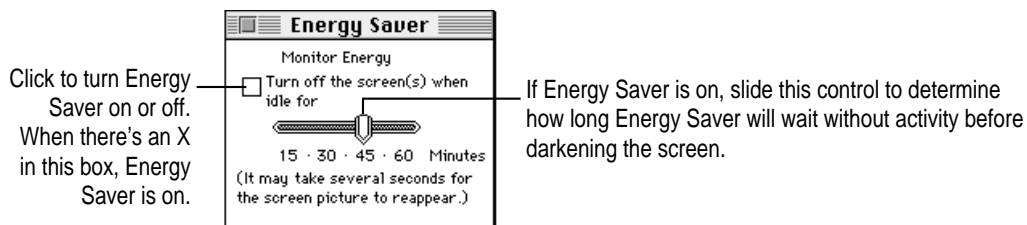
To use the Energy Saver control panel, follow these steps:

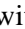
**1 Choose Control Panels from the Apple () menu.**

If you're using System 7.5, a pop-up menu appears. If you're using System 7.1, a window opens showing all the control panels.

**2 Choose Energy Saver or double-click the Energy Saver icon to open the Energy Saver control panel.**

**3 Make the following choices in the control panel:**



**IMPORTANT** If you've installed the AppleVision software that came with your monitor and the Energy Saver icon still doesn't appear or the Energy Saver control panel doesn't look like the one above, you may have a different type of energy-saving software. In this case, instructions in this section don't apply. See Macintosh (or Mac OS) Guide for instructions on saving energy. To open Macintosh Guide, choose Macintosh Guide from the Guide menu (marked with the  icon) when the Finder is active.

*Note:* Not all Mac OS-based computers work with Energy Saver. See "Troubleshooting" in Chapter 4 for more information.

**4 Close the control panel.**

**IMPORTANT** If you use Energy Saver, make sure you turn it off when you're doing disk-intensive tasks such as copying a large number of files, downloading large files from an online service, or printing a very large file. If Energy Saver is activated during a disk-intensive task, the task may be terminated prematurely and you may need to recopy or reprint a file.

### What happens after you turn on the energy-saving feature?

When Energy Saver detects that you're not using the computer, it darkens the monitor screen and reduces the amount of energy it consumes. While the monitor is darkened, your computer is still working, but to avoid accidental changes, Energy Saver won't let anything you type or do with the mouse affect any of your work.

To “wake up” the monitor, press any key on the keyboard. Your computer beeps while the monitor is waking up—about 10 seconds—and you can begin work as soon as the computer stops beeping. (The beep volume cannot be adjusted; it is independent of all system sound controls.)

### Using Energy Saver with a screen saver

Screen savers are applications you can purchase that put moving patterns on your monitor. Screen saver and Energy Saver applications prevent screen “burn-in.” Energy Saver also conserves energy.

If you wish, you can use Energy Saver and a screen saver program. Set the screen saver to come on before Energy Saver. If your screen saver program includes its own energy-saving feature, you can turn off Energy Saver.

# 3

## Using Your Monitor With Windows-Based Computers



This chapter describes how to install the AppleVision setup information and adjust the screen image on the AppleVision 850 Display. In most cases, you won't need to adjust the image unless you make changes to screen resolution.

*Note:* If you're using the monitor with a Mac OS–based computer, refer to Chapter 2, “Installing and Using AppleVision Software.”

## Installing AppleVision setup information for Windows 95

On Windows 95 systems, new devices are automatically detected when they are connected to your computer (if it is VESA DDC compliant). If you are not using Windows 95, see the manual that came with your video card for setup information.

To determine that Windows 95 has correctly identified your monitor, check Monitor Type in the Display Properties dialog box. Performing this check will ensure that the AppleVision setup information has been installed. Not installing the AppleVision setup information may limit the resolution and refresh rates on your monitor.

To correctly identify the monitor type in your computer, follow these steps:

- 1 Open the Start menu and choose Settings.**
- 2 Open the Control Panel and double-click the Display icon.**

The Display Properties dialog box appears.

- 3 Click the Settings tab at the top of the dialog box.**

The Settings property sheet appears.

- 4 Click the Change Display Type button in the lower-right corner to display the current Monitor Type.**

If the Monitor Type shown is the AppleVision 850, your computer has correctly identified your monitor. Go to the next section, “Screen Controls at a Glance.”

If the Monitor Type shown is not the AppleVision 850, continue with step 5.

- 5 Click the Change button next to the Monitor Type field; then select AppleVision 850 and click OK.**

If AppleVision 850 is not one of the devices displayed, then the AppleVision setup information file needs to be installed.

**6** Insert the *AppleVision Software* CD-ROM disc into your CD-ROM disc drive.

If you do not have a CD-ROM disc drive, see the service and support information that came with your monitor for information on how to order floppy disks.

**7** Click the **Have Disk** button.

**8** Choose the CD-ROM disc drive and click **OK**.

If an error occurs, make sure you've selected the correct disc drive.

**9** Choose the **AppleVision 850** in the **Monitor Type** field and click **OK**.

You're now ready to use the AppleVision monitor with your computer.

## Screen controls at a glance

The buttons on the front of your monitor provide a quick way to adjust the screen image. In most cases, you won't need to adjust the screen image unless you make changes to screen resolution.

Use the following buttons to make screen image adjustments:

**Control buttons**

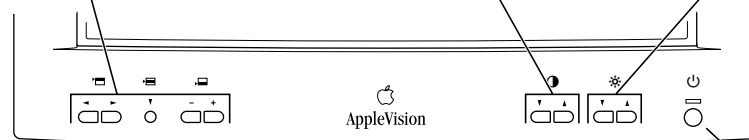
Use these buttons to make screen image adjustments. See "Using Onscreen Controls" later in this chapter.

**Contrast controls**

Press ▲ to increase contrast; press ▼ to decrease contrast.

**Brightness controls**

Press ▲ to increase brightness; press ▼ to decrease brightness.

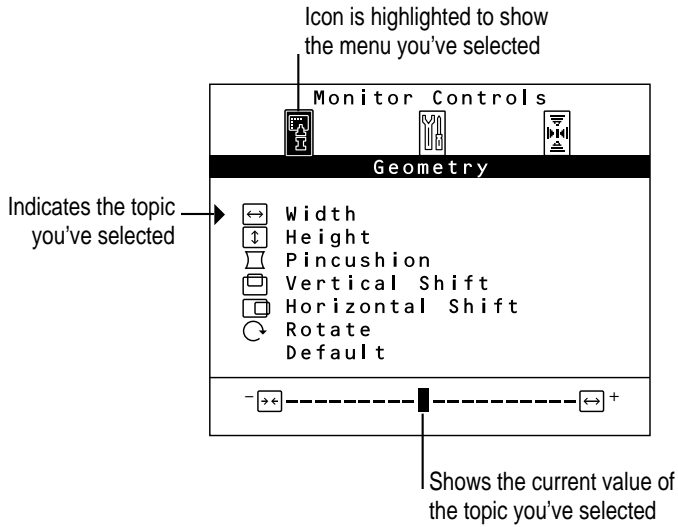


**Power button**  
Press to turn power on or off.

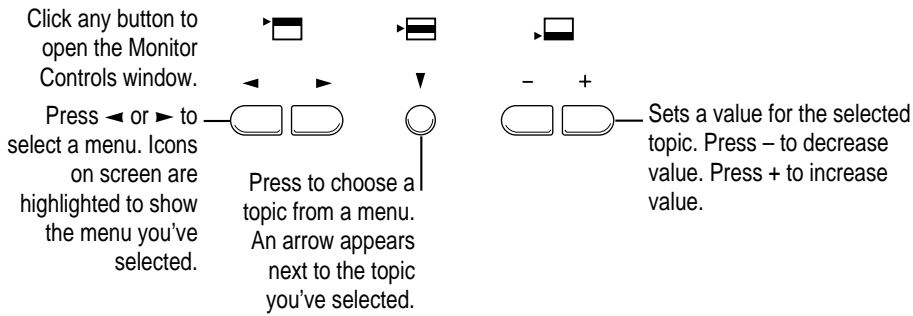
The contrast and brightness controls have an onscreen indicator that appears when you press the contrast and brightness control buttons on the front of your monitor. When you make an adjustment, the indicator bar moves to show the current setting. When you've finished making adjustments, the indicator disappears automatically.

## Using onscreen controls

Your AppleVision monitor comes with a set of onscreen controls you use to adjust the screen image.

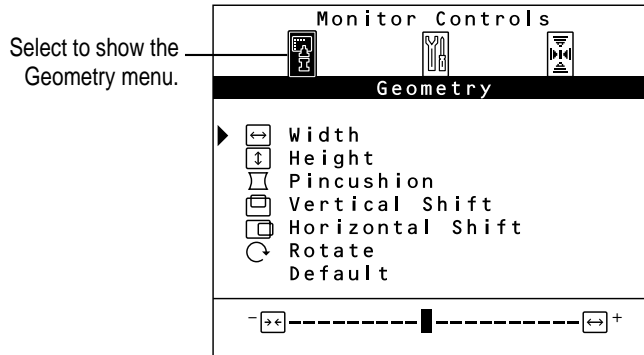


Use the buttons on the front of your monitor to open the Monitor Controls window and select topics from the menus.





## Adjusting screen geometry



Use the Geometry menu to adjust the height and width of the screen image, center the image on the screen, and so on.

### Width

Adjusts the width of the screen image. Press - to decrease width. Press + to increase width. When the width and height of the screen image are set properly, you can see the entire image on the screen.

### Height

Adjusts the height of the screen image. Press - to decrease height. Press + to increase height. When the height and width of the screen image are set properly, you can see the entire image on the screen.

### Pincushion

Adjusts the shape of the screen image. Press - to bring in the sides of the image, changing the shape from convex to concave. Press + to expand the sides of the image, changing the shape from concave to convex. When the shape of the image is set properly, the left and right sides are straight and the image is rectangular.

### Vertical Shift

Adjusts the vertical position of the screen image. Press - to move the image down. Press + to move the image up. When the screen image is centered properly, there is an equal border around all edges of the image.

### Horizontal Shift

Adjusts the horizontal position of the screen image. Press - to move the image to the left. Press + to move the image to the right. When the screen image is centered properly, there is an equal border around all edges of the image.

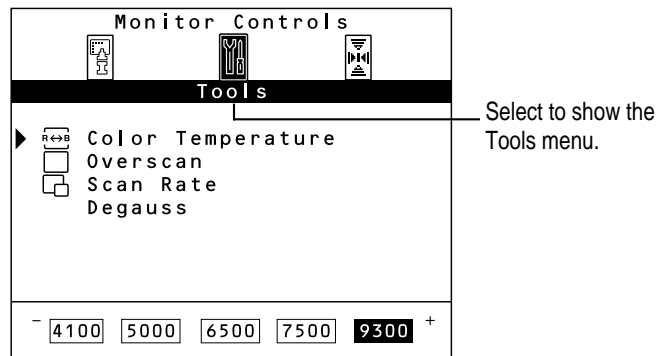
### Rotate

Rotates the screen image. Press - to rotate counterclockwise. Press + to rotate clockwise. When the rotation of the screen image is set properly, all four sides of the image are parallel to the edges of the screen and the image is rectangular.

### Default

Returns screen adjustments to the preset factory values. Press the + button to turn defaults on.

## Adjusting color settings and other features



Use the Tools menu to set color temperature, turn overscan on and off, display the scan rate of your monitor, and manually degauss.

### Color Temperature

Adjusts the color temperature of your monitor. The color temperature (or *white point*) you select for your monitor sets the mix of red, green, and blue light that makes the color white. This color temperature sets the foundation for other colors on your monitor.

The color temperature of your monitor can be changed to one of the following Kelvin temperatures: 4100 K, 5000 K, 6500 K, 7500 K, or 9300 K. (*Kelvin* is a temperature scale used in scientific applications.)

Press - to decrease color temperature. Press + to increase color temperature. Changing the color temperature changes the appearance of colors on the screen. Lower temperature settings create reddish whites, and higher temperature settings create bluer whites.

### Overscan

Turns overscan on and off. Overscan moves the screen image as far to the edges of the screen as possible without distorting the image. Press - to turn overscan off. Press + to turn overscan on.

When overscan is on, you cannot make screen geometry adjustments such as horizontal shift, rotation, and so on.

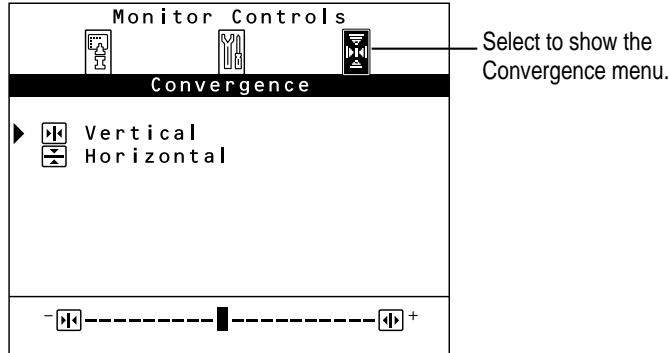
### Scan Rate

Shows the scan rate of the monitor. This setting is for informational purposes only; it's not for adjusting the scan rate.

### Degauss

Manually degausses the monitor. Press + to degauss the monitor.

## Adjusting convergence



Red, green, and blue signals in your monitor converge to create the colors you see on your screen. If the convergence is not set properly, images or text on your screen may appear blurred, or you may get a “rainbow” effect with several colors forming the edges of images on the screen.

If your monitor is exposed to an external electromagnetic field (for example, from another monitor) over a period of time, you may need to change the convergence to get a clear, distinct screen image.

Use the Convergence menu to adjust screen convergence. When convergence is set properly, the image is clear and distinct.

### Vertical

Adjusts the vertical convergence. Press - to move the red signal down and the blue signal up. Press + to move the red signal up and the blue signal down.

### Horizontal

Adjusts the horizontal convergence. Press - to move the red signal to the right and the blue signal to the left. Press + to move the red signal to the left and the blue signal to the right.

# 4

## Tips and Troubleshooting



This chapter includes information on the care and cleaning of your monitor, protecting your monitor from theft, and troubleshooting.

### Care and cleaning

- Do not block the monitor's vents.
- Do not let liquid get on or into the monitor.
- If you will not be using your monitor and computer for a long period of time (a day or more), make sure you turn off the computer (and your monitor, if necessary).

To clean the case and screen of the monitor:

- 1 Turn your computer and monitor off.**
- 2 Disconnect the monitor's power cord.**

If the monitor's power cord is connected to a grounded wall outlet, disconnect the power plug from the outlet.

If the monitor's power cord is connected to the back of your computer, disconnect the monitor's power plug from the back of the computer.

- 3 Wipe the case surfaces lightly with a clean, soft cloth dampened with water.**

Don't use aerosol sprays, solvents, or abrasives that might damage the finish on the case.

- 4 Use a mild, non-abrasive cleaner on a soft cloth and wipe the screen. Don't spray the cleaner onto the screen, because the liquid may drip inside the monitor.

**WARNING** Do not use a cleaner that contains alcohol or acetone. You might damage the screen.

## Protecting your monitor from theft

The slot at the base of the monitor in the back is for connecting a security lock. It lets you attach a narrow, flexible cable that you can use to secure your monitor (and the rest of your computer system) to prevent theft. Security locks are available from an Apple-authorized dealer or service provider.

## Troubleshooting common problems

This section contains descriptions of problems you might experience with your monitor as well as solutions to try. Problems related to the computer itself are covered in the manuals that came with your computer.

**WARNING** Never remove the cover from the monitor or you may come in contact with hazardous voltage levels capable of causing serious injury and possibly death.

**WARNING** If you have a problem with your monitor and nothing presented in this manual or in Apple Guide solves it, consult the service and support information that came with your monitor for instructions on how to contact an Apple-authorized service provider or Apple for assistance. If you attempt to repair the monitor yourself, any damage you may cause to the monitor will not be covered by the limited warranty on your monitor. Contact an Apple-authorized dealer or service provider for additional information about this or any other warranty question.

## Monitor power and screen appearance

**IMPORTANT** Detailed instructions for AppleVision software are provided in Macintosh Guide (called Mac OS Guide on some computers) and in Monitors & Sound Guide. System 7.1 users can view AppleVision software instructions in Adobe Acrobat Reader by opening the Monitors & Sound doc.pdf file (located in the AppleVision Extras folder). For Windows users, detailed instructions about onscreen controls are provided in Chapter 3, “Using Your Monitor With Windows-Based Computers.”

### The monitor’s power indicator light doesn’t come on.

- Make sure the monitor power button is turned on.
- Make sure the computer is turned on.

The monitor’s power indicator light won’t turn green unless your computer is on.

- Make sure an energy saver program isn’t active on the computer.

The monitor’s indicator light is amber when an energy saver program is on. Also, it may take some time to wake up your computer after you use an energy saver.

- Make sure the power cord is plugged in properly.

*If the monitor power cord is plugged into your computer, make sure your computer is on and the cord is firmly plugged in.*

*If the monitor power cord is plugged into a grounded wall outlet, make sure the cord is firmly plugged in. Check to see whether power to the outlet has been interrupted. You can test the outlet by plugging in something that you know works—like a desk lamp or radio. If the test appliance works, but the monitor doesn’t, contact an Apple-authorized dealer or service provider.*

- Make sure the monitor cable is connected to your computer properly.
- Make sure the thumbscrews on the monitor cable are tightened securely.

**No image appears on the screen and the monitor's power indicator light is on.**

- Make sure the monitor cable is connected correctly to the computer.
- Make sure the thumbscrews on the monitor cable are tightened securely.
- Make sure the contrast (●) and brightness (☼) controls are set correctly. The contrast and brightness controls are on the front of your monitor.
- Restart your computer, holding down ⌘-Option AV. This resets the monitor to factory default settings.

**The screen is dark or appears dim.**

- Make sure that your computer and monitor are turned on.
- Make sure that the power cord and the monitor cable are securely connected at both ends.
- Increase the contrast and brightness of the screen image. The contrast (●) and brightness (☼) controls are on the front of your monitor.
- A screen saver that darkens your screen may be activated. Press any key on the keyboard to reactivate the monitor.
- On Mac OS–based computers, the Energy Saver option may be activated. Press any key on the keyboard to reactivate the monitor. In approximately 10 seconds, the monitor is reactivated.

**Over time, you experience eyestrain.**

- Adjust the screen contrast. In a bright room, contrast is usually best set at maximum; in a dim room, lower contrast is usually more comfortable. The contrast (●) controls are on the front of your monitor. Also, be sure to take occasional breaks to focus your eyes on a distant object.
- Adjust the color temperature or white point of the screen image. For most application programs, a white point of 9300 K is best. For Mac OS–based computers, click the Color button in the Monitors & Sound control panel and set a new white point. For Windows-based computers, open the Tools menu, select Color Temperature, and set a new white point.



**Contrast (☉) and brightness (☼) controls on the front of the monitor don't appear to work.**

- For Mac OS–based computers, your monitor may have the contrast (☉) and brightness (☼) controls disabled. Click the Color button in the Monitors & Sound control panel and select Preferences. Under Calibration Protection, make sure that the checkbox to disable contrast and brightness controls is not marked; then, click OK.

**The screen doesn't dim when Energy Saver or other energy-saving software is on.**

- Make sure the energy-saving software is installed properly and the amount of time you've set up to trigger it has passed. For Mac OS–based computers, see “Conserving Energy” in Chapter 2 for more information. For Windows-based computers, see the manual that came with your energy-saving computer.

**The screen flickers.**

- Make sure the monitor cable is connected firmly to the correct port on the back of the computer.
- The flickering could be caused by interference from a nearby power line or electrical equipment—for example, a radio, a microwave oven, or another computer. Try relocating nearby electrical equipment, or moving your computer and monitor.
- If you have more than one monitor attached to your computer, the monitors might be interfering with one another. Make sure you're using a shielded ADB connector cable. Move the monitors farther apart or set the monitors at an angle, so their screens are close and their back panels are farther apart. If, after moving the monitors more than 16 inches apart, you still see flickering, contact an Apple-authorized dealer or service provider.
- If you are using a video card that has a very low refresh rate (below 67 Hz), the monitor may flicker. You may be able to change the refresh rate for the card. If possible, use a 75 Hz setting. See the manual that came with your video card for more information.

**There are one or two very thin gray lines across the screen, one near the top and the other near the bottom.**

- This is a normal characteristic of the Trinitron color picture tube design. The lines do not appear in any documents you print.

**The screen image is off-center.**

- Adjust the center of the image. For Mac OS–based computers, click the Geometry button in the Monitors & Sound control panel and modify the Position setting. For Windows-based computers, select the Geometry menu; then, click Vertical Shift. Press - to move the screen down and + to move the screen up. Repeat the process for Horizontal Shift.

**The screen image is tilted slightly to the left or right.**

- Adjust the rotation of the screen image. For Mac OS–based computers, click the Geometry button in the Monitors & Sound control panel and modify the Rotate settings. For Windows-based computers, select the Geometry menu; then, click Rotate. Press - to rotate counterclockwise and + to rotate clockwise.

**The screen image is too large or too small.**

- Adjust the horizontal or vertical size of the screen image. For Mac OS–based computers, click the Geometry button in the Monitors & Sound control panel and modify the height/width settings. For Windows-based computers, select the Geometry menu; then, click Width. Press - to decrease width and + to increase width. Repeat the process for Height.
- Make sure Overscan is off. For Mac OS–based computers, click the Geometry button in the Monitors & Sound control panel and select Off for Overscan. For Windows-based computers, select the Tools menu; then, click Overscan. Press - to turn off overscan.
- Try changing to another resolution. For Mac OS–based computers, click the Monitor button in the Monitors & Sound control panel and select another resolution. For Windows-based computers, see the manual that came with your computer or video card.

**Images or text on your screen appear fuzzy or blurred.**

- Adjust the horizontal or vertical convergence of the screen image. For Mac OS–based computers, click the Geometry button in the Monitors & Sound control panel and select Convergence to change settings. For Windows-based computers, select the Convergence menu; then, click Vertical. Press - to move the red signal down and the blue signal up. Press + to move the red signal up and the blue signal down. Then, click Horizontal. Press - to move the red signal to the right and the blue signal to the left. Press + to move the red signal to the left and the blue signal to the right.

**The colors on your screen appear too blue, too yellow, or too red.**

- Adjust the color settings, recalibrate the monitor, set a new white point, or reset the monitor to the default factory color settings. For Mac OS–based computers, click the Color button in the Monitors & Sound control panel to open color controls. For Windows-based computers, see “Adjusting Color Settings and Other Features” in Chapter 3 for more information.

**The screen appears greenish, the screen image is blank or unreadable, or there is “snow” on the screen.**

- Make sure the monitor cable is connected firmly to the correct port on the back of the computer.

**There are wavy lines on the screen, creating an optical effect or moiré pattern.**

- You may see a moiré pattern while in some resolutions, depending on the desktop pattern displayed on the screen (the black-and-white checkerboard pattern frequently causes moiré). For Mac OS–based computers, click the Monitor button in the Monitors & Sound control panel and change to another resolution. For Windows-based computers, see the manuals that came with your computer. To change the desktop pattern, see the manuals that came with your computer or, for Mac OS–based computers, also see Macintosh (or Mac OS) Guide for more information.

**Your application program doesn't recognize changes you make in resolution settings.**

- Some application programs do not properly support resolution changes you make to your monitor. You may have to close and restart your program for it to recognize the resolution changes.

## Monitors & Sound control panel for Mac OS–based computers

**IMPORTANT** Detailed instructions for AppleVision software are provided in Macintosh Guide (called Mac OS Guide on some computers) and Monitors & Sound Guide. System 7.1 users can view AppleVision software instructions in Adobe Acrobat Reader by opening the Monitors & Sound doc.pdf file (located in the AppleVision Extras folder).

**The name of your monitor doesn't appear in the Monitors & Sound control panel.**

- After you set up your AppleVision monitor, make sure the monitor power is on and restart your computer.
- Make sure the ADB connector on the monitor cable is plugged directly into your computer's ADB port.
- Make sure you've installed the AppleVision software that came with your monitor. See "Installing AppleVision Software" in Chapter 2 for more information.
- You may be using a video card that's not compatible with your monitor. Contact the manufacturer of the video card for information.

**A message appears, "This version of system software is not supported by the AppleVision software."**

- Make sure you're using System 7.1 or later.
- If this message appears in the AppleVision software installer, make sure you select the startup hard disk in the Installation dialog box.

**A message appears, "The AppleVision preferences are invalid and may have become corrupted."**

- Delete the AppleVision preferences folder on your hard disk and restart your computer.

**A message appears, "An error has occurred reading from or writing to a file."**

- Make sure you are not starting up from a non-writable disk, such as a CD, a locked hard drive, or a floppy disk.

**A message appears, “This monitor is not supported by this version of the AppleVision software.”**

- Make sure you have installed the AppleVision software that came with your monitor. See Chapter 2, “Installing and Using AppleVision Software,” for more information.

**A message appears, “AppleVision failed to load,” followed by an error code.**

- Make sure you’ve plugged the monitor connector and ADB connector on the monitor cable into the correct ports. You may have plugged them into the wrong ports by mistake. See “Connecting the Monitor Cable to a Mac OS–Based Computer” in Chapter 1 for more information.
- Make sure your video card supports the AppleVision monitor. See the manual that came with your video card or computer.
- Some viruses can cause problems with the AppleVision software. Make sure you regularly scan your computer for viruses.
- If AppleVision software is installed and you start up your computer holding the Shift key down, the Display Enabler extension will not load and the software will not run. Restart your computer without disabling extensions to use the AppleVision software.
- If none of the suggestions solves the problem, reinstall the AppleVision software.

**The Monitors & Sound control panel opens, but does not include the Geometry or Color buttons.**

- Make sure the ADB connector on the monitor cable is plugged directly into your computer’s ADB port.
- Reinstall the AppleVision software that came with your computer. See Chapter 2, “Installing and Using AppleVision Software,” for more information.

**ColorSync Profile files are not updated when ColorSync is installed.**

- Out-of-date profiles in the ColorSync Profiles folder are not removed automatically. If you want to remove a ColorSync profile, you must do so manually. See Appendix A, “Using ColorSync,” for more information about ColorSync.

**Your AppleVision monitor appears as a VGA monitor in the Control Strip pop-up menus.**

- Make sure the ADB connector on the monitor cable is plugged directly into your computer's ADB port.
- Reinstall the AppleVision software that came with your computer. See Chapter 2, "Installing and Using AppleVision Software," for more information.

**You hear no alert sound.**

- Make sure the alert volume control is set correctly. Click the Alerts button in the Monitors & Sound control panel and reset the System Alert Volume.

**Your third-party driver no longer shows up in your Monitors & Sound control panel.**

- Some Mac OS–based sound drivers require the Sound control panel, an older control panel that has been replaced on your computer by the Monitors & Sound control panel. You can reinstall the Sound control panel. Open the Apple Extras folder on your hard disk and double-click the AppleVision Extras folder. Double-click the Sound control panel icon.

**Changes in the Monitors & Sound control panel don't work for the monitor.**

- Make sure you have installed the AppleVision software that came with your monitor.
- Because each monitor connected to your computer has its own Monitors & Sound window, use the window that displays the name of your AppleVision monitor in the top-left corner.

**When you open the Monitors & Sound control panel, only one resolution is available.**

- Make sure you have connected the ADB connector to your computer. You cannot use many of the features of the AppleVision software without an ADB connection. See "Connecting the Monitor Cable to a Mac OS–Based Computer" in Chapter 1 for more information.
- If AppleVision software is installed and you start up your computer holding the Shift key down, the Display Enabler extension will not load and the software will not run. Restart your computer without disabling extensions to use the AppleVision software.
- Reinstall the AppleVision software that came with your computer. See Chapter 2, "Installing and Using AppleVision Software," for more information.

**When you turn on overscan, it stays on even when you change resolutions.**

- This is a new feature of the AppleVision 850 Display. In other AppleVision monitors, overscan will automatically turn off when you change resolution settings.

**No colors appear on the screen.**

- Check to make sure that the number of colors is set correctly in the Control Strip or in the Monitors & Sound control panel.

**No colors appear when you create a custom white point.**

- Make sure the color depth on your monitor is set to “Thousands of Colors” or “Millions of Colors.” Click the Monitor button in the Monitors & Sound control panel and reset the color depth, or use the Control Strip to change settings.

**You do not have a CD-ROM disc drive for installing the AppleVision software.**

- You can order a set of floppy disks of the AppleVision software. See the service and support information that came with your monitor for more information. Support information and Apple software updates are also available via Apple’s World Wide Web sites: <http://www.info.apple.com> and <http://www.support.apple.com>.







## Appendix A Using ColorSync

Mac OS–based computers use ColorSync to help make sure that the colors you see on your monitor closely match the colors you get on your printers, scanners, and other devices. Because ColorSync works behind the scenes, you don't have to know anything about it. All you need to do is initially set it up. This appendix describes how ColorSync works and how to configure your monitor and computer to take advantage of it.

### The problem that ColorSync solves

Providing consistent color with desktop computers is a technical challenge because different color devices use different methods for representing color, and they produce different ranges of colors. For example, the colored light on your monitor is very different from the colored inks your printer uses.

Different color devices also create color using different methods. Monitors (and most scanners) produce colors by mixing red, green, and blue light—called *RGB color*. Most printers produce colors by mixing cyan (a shade of blue), magenta (a bright pink), yellow, and black ink. This color system is called *CMYK*. Since monitors, printers, and scanners each have different color capabilities, they cannot reproduce each other's colors exactly.

Further compounding the problem is that no two monitors or printers produce exactly the same colors. (For example, you can see differences in color ability among monitors in the TV department of a consumer electronics store.)

ColorSync is a system extension that provides color-conversion capabilities and improves color consistency. ColorSync “translates” the colors used on one device so that they more closely match the colors displayed or printed on another device.

ColorSync color conversion is a central part of Mac OS–based computing, ensuring that applications, monitors, printers, scanners, and digital cameras can use the same scheme for color conversion. This means you can scan an image, display it on your monitor, and print it—with visually matching colors every step of the way.

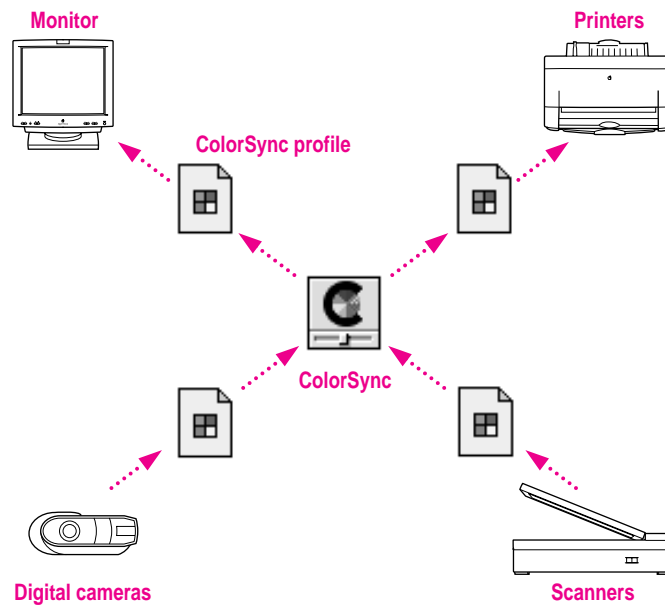
## How ColorSync works

When you create a TIFF or PICT file using a program that supports ColorSync, a “profile” describing the color capabilities of your equipment is saved with the image. For example, when you scan a photograph, a profile describing the scanner is saved inside the image file. If you later print the image, even using a different computer, ColorSync looks at the profile to learn about the capabilities of the scanner you used, and automatically picks closely matching colors that your printer can reproduce.

The profile contains information ColorSync needs to perform color matching, such as the lightest and darkest possible tones (white point and black point) that the device can produce, and the maximum supported densities for red, green, blue, cyan, magenta, and yellow. Together, these characteristics describe the *color gamut* (or *range*) that a device is capable of capturing, displaying, or reproducing. To take advantage of ColorSync, each of the imaging devices you use needs to have its own ColorSync profile. When you create images using these devices, information from the profile will automatically become part of the image file—ensuring that colors are consistent throughout the entire creative process.

Because ColorSync information becomes part of your output files, you don't have to worry about losing the profile or using the wrong profile with the wrong image. Additionally, ColorSync profiles are in the standard International Color Consortium (ICC) format recognized by Microsoft Windows, Mac OS, and other systems.

When you work with an image that has an embedded ColorSync or ICC profile, ColorSync identifies the colors that your monitor or printer can reproduce by examining their ColorSync profile. It compares their capabilities with those of the system used to create the image (as described in the embedded profile), and then picks appropriate, matching colors. For example, your monitor may be able to display a vivid red, but your printer inks may not be able to produce that color. ColorSync determines the “next best” color for your printer to use.



ColorSync performs color matching by comparing each profile to an independent color standard. ColorSync uses the CIE color standard, which describes colors in terms of how they are perceived by the human eye under specific lighting conditions. (CIE stands for the Commission International de l’Eclairage, the International Commission on Illumination, which created the standard in 1931.)

## Setting up ColorSync

To take advantage of ColorSync, you need to obtain profiles for each of your imaging devices, such as your monitor, scanner, and color printer. ColorSync profiles are usually automatically installed when you install the software for a ColorSync-supported device. Profiles are stored in the ColorSync Profiles folder, inside the Preferences folder in the System Folder. If you need to obtain a ColorSync profile, contact the manufacturer of your device. Ask for either a ColorSync or ICC profile for the specific model of monitor, printer, or scanner you're using.

You also need to make sure the ColorSync extension is installed and active. ColorSync is automatically installed in the Extensions folder of your System Folder during AppleVision software installation. Unless you've removed or disabled it, it's already installed.

Finally, you need to set a ColorSync System Profile for the Mac OS. The ColorSync System Profile is used by ColorSync to determine the color range of your monitor. ColorSync compares this information with the profiles of your other devices to make sure that colors are consistent with what you see on your monitor.

Additionally, the System Profile is used as a default profile if a document you are working on doesn't have any ColorSync information saved within it. This can occur if the document was created without ColorSync installed. By using the System Profile as a default, ColorSync ensures that colors are consistent with what you currently see on your monitor.



## Setting the ColorSync System Profile

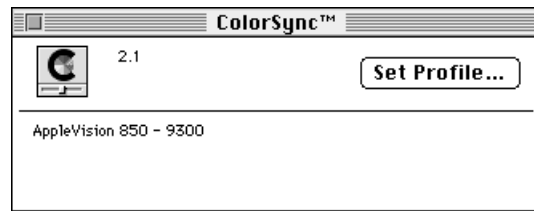
To set the System Profile, follow these steps:

- 1 **Make sure the profile you want to use is located in the ColorSync Profiles folder.**

This folder is located in the Preferences folder in your System Folder.

- 2 **Choose Control Panels from the Apple () menu and open the ColorSync System Profile control panel.**

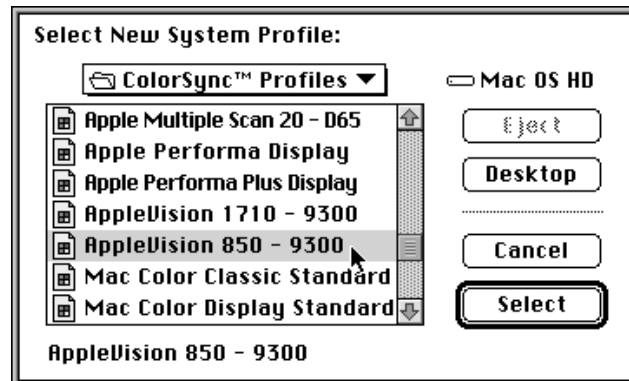
The ColorSync System Profile control panel appears.



- 3 **Click Set Profile.**

A dialog box appears with a list of ColorSync profiles installed on your computer.

- 4 **Click the profile you want to use or create your own custom profile.**



Select the profile for the AppleVision 850 monitor. If you've created a custom ColorSync profile that describes your color settings, select it as the system profile instead. See Monitors & Sound Guide or the Monitors & Sound doc.pdf file for more information on creating custom ColorSync profiles.

**5 Click Select.**

ColorSync automatically references the profile you selected and uses it to define the color capabilities of your monitor.

**6 Close the ColorSync System Profile control panel.**

### Setting other ColorSync profiles

Some programs and printer software might require that you do something special, such as turning on an option, in order to take advantage of ColorSync. For example, to use ColorSync with the Apple Color OneScanner, select the Use ColorSync option in the ColorSync Preferences dialog box of the OneScanner Dispatcher software. This tells the scanning software to embed information about the Color OneScanner in scanned images.

Refer to the instructions that came with your application or device to determine if it supports similar options. If there's an option to specify a profile or to activate ColorSync, be sure to use it.

## Tips for best results

After you've made sure ColorSync is installed, set the System Profile, and set any necessary ColorSync options for your applications, you're ready to begin taking advantage of ColorSync! Just scan, create, and print your images or documents as you normally would. ColorSync works behind the scenes to ensure consistent color matching.

The following settings and strategies will help you get the best color results from your system. Not all of these tips will apply to the software and devices you may be using, but be sure to take advantage of those tips that do.

- Set the gamma curve for your monitor to 1.8:Standard to have the monitor more closely match printed results. See *Monitors & Sound Guide* or the *Monitors & Sound doc.pdf* file for more information on gamma settings available in the *Monitors & Sound* control panel.



- Use the ColorSync System Profile control panel in the Apple (🍏) menu to select the AppleVision 850 - 9300 profile for your monitor if your white point is set to 9300 + 8MPCD. If you calibrate your monitor to a white point setting other than 9300 + 8MPCD, create a custom profile and select it as the system profile instead. See *Monitors & Sound Guide* or the *Monitors & Sound doc.pdf* file for more information on creating custom ColorSync profiles.
- Share custom ColorSync profiles describing your AppleVision color settings with others to help ensure color accuracy for images you create using your AppleVision monitor. See *Monitors & Sound Guide* or the *Monitors & Sound doc.pdf* file for information on exporting ColorSync profiles.
- When printing in color, check to see if the printing options include a setting for ColorSync. For example, for the Apple LaserWriter 12/600 PS, turn on ColorSync by clicking the Options button and selecting “ColorSync Color Matching.”
- If your scanning program has a ColorSync option, use it. This embeds a ColorSync profile within the scanned image file, and ColorSync will be better able to reproduce the original colors on your monitor and printer.
- Don't try to use two color-matching systems at once on your computer. Some applications install other color-matching systems. These should either be removed or disabled if you want to use ColorSync.







## Appendix B Technical Information

• • • • •

### Picture tube

- 20-inch (19.0-inch diagonal viewable image size) Trinitron CRT

### Screen

- Multilayer anti-reflection panel conforms to TCO 92 guidelines
- 0.26 millimeter (mm) stripe pitch
- 0.25 mm grille pitch

### Input signals

- Red, green, and blue video signals
- Multiple scan
- DDC clock and data signals
- Vertical Refresh: 48 hertz (Hz) to 120 Hz
- Horizontal Scan: 30 kilohertz (kHz) to 94 kHz

### Power-saving and environmental features

- TCO 92 compliant
- MPR II compliant to ensure reduced electromagnetic and electrostatic emissions
- Energy Star compliant
- Power-saving feature compatible with Video Electronics Standards Association (VESA) Display Power Management Standard (DPMS)

### User controls

- Power-on button
- Automatic degauss at power-up; manual degauss by turning power switch off, then on
- Control buttons: Contrast, brightness, and five buttons for onscreen controls
- Additional screen controls available using the Monitors & Sound control panel (Mac OS–based computers) or onscreen controls (Windows-based computers)

### Factory preset timings

- Adjusted at the factory for the following standard modes:

| Mode      | Resolution | Vertical refresh rate (hertz) | Horizontal scan rate (kilohertz) |
|-----------|------------|-------------------------------|----------------------------------|
| VGA       | 640 x 480  | 60                            | 31.469                           |
| Macintosh | 640 x 480  | 67                            | 35.036                           |
| VESA      | 640 x 480  | 72                            | 37.861                           |
| VESA      | 640 x 480  | 75                            | 37.500                           |
| VESA      | 640 x 480  | 85                            | 43.269                           |
| VESA      | 800 x 600  | 56                            | 35.160                           |
| VESA      | 800 x 600  | 60                            | 37.879                           |
| VESA      | 800 x 600  | 72                            | 48.077                           |
| VESA      | 800 x 600  | 75                            | 46.875                           |
| VESA      | 800 x 600  | 85                            | 53.674                           |
| Macintosh | 832 x 624  | 75                            | 49.700                           |
| IBM       | 1024 x 768 | 87 interlaced                 | 35.522 interlaced                |
| VESA      | 1024 x 768 | 60                            | 48.363                           |
| VESA      | 1024 x 768 | 70                            | 56.476                           |

*continued* ►

| Mode      | Resolution  | Vertical refresh rate (hertz) | Horizontal scan rate (kilohertz) |
|-----------|-------------|-------------------------------|----------------------------------|
| VESA      | 1024 x 768  | 75                            | 60.023                           |
| VESA      | 1024 x 768  | 85                            | 68.677                           |
| Macintosh | 1152 x 870  | 75                            | 68.700                           |
| VESA      | 1280 x 1024 | 75                            | 79.976                           |
| VESA      | 1280 x 1024 | 85                            | 91.146                           |
| VESA      | 1600 x 1200 | 75                            | 93.750                           |

#### Input electrical requirements

- Voltage: 90-264 V
- Frequency: 47-63 Hz
- Power: 150 W maximum

#### Weight

- Approximately 67 pounds (30 kilograms)

#### Dimensions

- Height 474 millimeters (mm) ± 3 mm
- Width 484 mm ± 3 mm
- Depth 515 mm ± 3 mm  
(not including cables)

#### Interfaces

- Apple Desktop Bus (ADB): Two ADB pass-through output ports

#### Color compatibility

- Works with ColorSync 2.1 or higher. ColorSync profiles are compatible with the profile specifications of the International Color Consortium (ICC).

### **Temperature**

#### **Celsius (C) and Fahrenheit (F)**

- Operating 10° to 40° C (50° to 104° F)
- Storage 0° to 60° C (32° to 140° F)
- Shipping –40° to 60° C (–4° to 140° F)

#### **Humidity (noncondensing)**

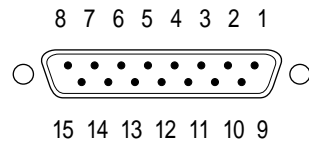
- Operating 20% to 95%
- Storage 5% to 95%
- Shipping 5% to 95%

### **Altitude**

- Operating 0 to 10,000 feet (ft.)  
0 to 3048 meters (m)
- Shipping 0 to 35,000 ft.  
0 to 10,670 m

### Display cable specifications

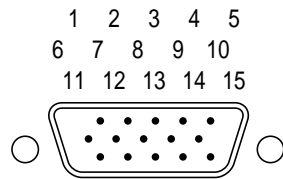
- 15-pin miniature D-type connector



| Pin   | Signal                 |
|-------|------------------------|
| 1     | Red video ground       |
| 2     | Red video              |
| 3     | Not used               |
| 4     | ID 1/DDC RTN           |
| 5     | Green video            |
| 6     | Green video ground     |
| 7     | ID 2/DDC SCL           |
| 8     | DDC 5V                 |
| 9     | Blue video             |
| 10    | ID 3/DDC SDA           |
| 11    | Vertical Sync return   |
| 12    | Vertical Sync          |
| 13    | Blue video ground      |
| 14    | Horizontal Sync return |
| 15    | Horizontal Sync        |
| Shell | Shield ground          |

### VGA adapter specifications

- Standard 15-pin VGA connector



| Pin   | Signal          |
|-------|-----------------|
| 1     | Red video       |
| 2     | Green video     |
| 3     | Blue video      |
| 4     | Monitor ID 2    |
| 5     | DDC return      |
| 6     | Red return      |
| 7     | Green return    |
| 8     | Blue return     |
| 9     | DDC 5V          |
| 10    | Sync return     |
| 11    | Monitor ID 0    |
| 12    | SDA (ID 1)      |
| 13    | Horizontal Sync |
| 14    | Vertical Sync   |
| 15    | SCL (ID 3)      |
| Shell | Shield ground   |



**Can't Find It? See also Macintosh Guide's onscreen index. Open the Guide (Ⓜ) menu and choose Macintosh Guide; then click the Index button.**

## Index



### A

adapters  
    for connecting to a high-density port 12  
    VGA adapter 12, 13, 70  
ADB cables 11, 14  
ADB connector 11, 14  
ADB port  
    connecting the monitor to 10–11  
    connecting two monitors to 15  
    location of 5  
adjusting the screen 8–9  
Adobe Acrobat Reader 26–27  
Alerts button (Monitors & Sound control panel) 30  
alert sound (Mac OS)  
    changing 30  
    troubleshooting 54  
altitude requirements 68  
amber power indicator light 16  
ambient light setting, changing (Mac OS) 30  
angle of the monitor, adjusting 8  
AppleVision setup information for Windows 95 38  
AppleVision software (Mac OS) 21–36  
    Control Strip in 32

DigitalColor Meter in 32–33  
Energy Saver control panel in 34–36  
floppy disk version of 55  
installing 21–24  
Monitors & Sounds control panel in 29  
onscreen help for 24–26  
Pantone Color Picker extension in 34–36  
software license agreement for 22  
tips for using 31  
using with System 7.1 26–27  
using with System 7.5 or later 24–26  
Apple World Wide Web sites 18  
Arrange button (Monitors & Sound control panel, Mac OS) 30

### B

blank or unreadable screen 51  
blurred images or text 51  
brightness  
    adjusting 28, 30  
    troubleshooting (Mac OS) 49  
buttons on front of the monitor 28



**Can't Find It?**

See also **Macintosh Guide's onscreen index.**

**Open the Guide** (🔍)

**menu and choose**

**Macintosh Guide; then**

**click the Index button.**

## C

### cables

- ADB cables 11, 14
- keyboard cable 14
- monitor cable 10–13
- mouse cable 14
- shielded connector cable 15

### case, cleaning 45

### CD player 30

### cleaning

- case 45
- screen 1, 45

### color

- compatibility of 67
- consistency of. *See* ColorSync
- depth of, changing (Mac OS) 30–32
- specifying with Pantone Matching System (Mac OS) 32, 34
- troubleshooting 51, 55

### Color button (Monitors & Sound control panel, Mac OS) 30, 31

### color calibration, adjusting (Mac OS) 30

### color conversion 58. *See also* ColorSync

### color settings, adjusting (Windows) 42–43

### ColorSync (Mac OS) 57–63

- how it works 58–59
- importing/exporting ColorSync profiles 30
- problem solved by 57–58
- setting the ColorSync System Profile 61–62
- setting up 60–62
- tips for best results with 62–63

### Color Temperature option (Tools menu, Windows) 43

### communications regulation

information vii

### computers. *See* Mac OS–based computers; Windows-based computers

### configuring more than one monitor (Mac OS) 30

### connecting the monitor to your computer 9–14

#### connecting a Mac OS–based computer keyboard and mouse to your monitor 14

#### connecting the monitor cable to a Mac OS–based computer 10

#### connecting the monitor cable to video connectors 12

#### connecting the monitor cable to a Windows-based computer 13

#### connecting the power cord 10

#### connecting to a standard monitor port 10–11

#### safety precautions for 9

#### using more than one monitor 15

### connectors

- ADB connector 11, 14
- monitor connector 10–11, 13
- video connectors 12

### conserving energy (Mac OS) 34–36

### contrast

- adjusting 28, 30, 48
- troubleshooting 49

### control buttons 28, 66

### controls on screen

- Mac OS–based computers 30
- Windows-based computers 40

### Control Strip (Mac OS) 32

### convergence, adjusting (Mac OS) 30, 31

## D

### dark screen 48

### Default option (Geometry menu, Windows) 42

### Degauss option (Tools menu, Windows) 43

### diagonal viewable image size 1

### Digital–Color Meter (Mac OS) 32–33

### dimensions of the monitor 67

### dim screen 48

### disconnecting power 2

### display cable specifications 69



## E

- electrical grounding 9
- electrical requirements 67
- electrical safety precautions 2–3
- electromagnetic emissions 3
- Energy Saver (Mac OS) 34, 49
- environmental features 65
- expansion slots 15
- eyestrain 48

## F

- factory preset timings 66–67
- flickering screen 49
- fuzzy images or text 51

## G

- gamma curve setting, changing (Mac OS) 30
- Geometry button (Monitors & Sound control panel, Mac OS) 30, 31
- Geometry menu (Windows) 41–42
- glare on screen 8
- green power indicator light 16
- grounded outlet 10
- grounding 9

## H

- Height option (Geometry menu, Windows) 41
- help 18. *See also* Monitors & Sound Guide; troubleshooting
- high-density ports, connecting to 12
- horizontal scan rate 6, 66–67
- Horizontal Shift option (Geometry menu, Windows) 42
- humidity requirements 68

## I, J

- image options, changing (Mac OS) 30
- importing/exporting ColorSync profile (Mac OS) 30
- input electrical requirements 67
- input signals 65
- Installer program 22–23
- installing AppleVision software 21–24
- interfaces 67
- interference 15

## K

- keyboard, connecting to the monitor (Mac OS–based computer) 14

## L

- location for the monitor 7
- locking the monitor 46

## M, N

- Macintosh Guide 18, 24
- Mac OS–based computers
  - connecting keyboard and mouse to the monitor 14
  - connecting monitor cable to 10–12
  - installing and using AppleVision software on 21–36
  - video card for 7
- Mac OS System 7.1, AppleVision software and 26–27
- Mac OS System 7.5 or later, AppleVision software and 24–26
- microphone 30
- Monitor button (Monitors & Sound control panel, Mac OS) 30
- monitor cable
  - connecting to a Mac OS–based computer 10–12
  - connecting to video connectors 12
  - connecting to a Windows-based computer 13



**Can't Find It?**

See also **Macintosh Guide's onscreen index**.  
Open the **Guide (G)** menu and choose **Macintosh Guide**; then click the **Index** button.

monitor connector 10–11, 13  
monitor port  
  on a Mac OS–based computer 10–11  
  on a Windows-based computer 13  
Monitors & Sound control panel (Mac OS)  
  troubleshooting 52–55  
  working with 29–30  
Monitors & Sound Guide (Mac OS)  
  purpose of 24–25  
  tips for using 25–26  
mouse, connecting to the monitor (Mac OS–based computer) 14  
multiple monitors, using 15

**O**

off-center images on screen 50  
online support 18  
onscreen controls  
  Mac OS–based computers 30  
  Windows-based computers 40  
overscan  
  on Mac OS–based computers 30, 31, 54  
  on Windows-based computers 43

**P, Q**

Pantone Matching System 32, 34  
picture tube 65  
Pincushion option (Geometry menu, Windows) 41  
placement of the monitor 7  
ports  
  ADB port 5, 10–11, 14, 15  
  high-density ports 12  
  monitor port 10, 11, 13  
  video port 10  
positioning the monitor 8–9  
power  
  conserving 65  
  disconnecting 2  
  troubleshooting 47

power button 5, 16, 28  
power cord, connecting 10  
power indicator light 5, 16  
power jumper cord 10  
power requirements 67  
power strip 10

**R**

radio interference vii, 15  
recalibrating the monitor (Mac OS) 31  
repair 46  
resolution  
  changing (Mac OS) 30, 32  
  standard 6, 66–67  
RGB (red, green, blue) values, identifying (Mac OS) 33  
Rotate option (Geometry menu, Windows) 42

**S**

safety precautions  
  cleaning screen 1  
  electrical safety 2–3, 9  
  plugging in ADB connector 11  
scan ranges 6  
Scan Rate option (Tools menu, Windows) 43  
screen  
  adjusting 9  
  adjusting geometry of (Windows) 41–42  
  adjusting images on (Mac OS) 28  
  blurred or fuzzy images or text on 51  
  cleaning 1, 45  
  color problems on 51  
  dark images on 48  
  dark or dim 48  
  flickering 49  
  glare on 8  
  images fail to appear on 48  
  off-center images on 50  
  over- or undersized images on 50

- resolution of. *See* resolution
- snow on 51
- technical information about 65
- tilted images on 50
- wavy lines on 51
- screen controls 28
- screen geometry, adjusting (Windows) 41–42
- second monitor, using 15
- security lock 46
- service provider 46
- setting up the monitor 1–18
- shielded connector cable 15
- snow on screen 51
- software. *See* AppleVision software
- software license agreement 22
- sound, controlling (Mac OS) 29–30
- Sound button (Monitors & Sound control panel, Mac OS) 30
- sound input devices 30
- speakers, adjusting volume and balance of (Mac OS) 30
- standard modes 66
- support 18
- System 7.1, AppleVision software and 26–27
- System 7.5 or later, AppleVision software and 24–26

## T

- technical information 65–70
- technical support 18
- temperature requirements 68
- text, blurred or fuzzy on screen 51
- theft, avoiding 46
- tilted images on screen 50
- Tools menu (Windows) 42–43
- troubleshooting 18, 46–55
  - alert sound fails 54
  - blank or unreadable screen 51
  - blurred or fuzzy images or text 51
  - brightness 49
  - color 51, 55

- contrast 48
- dark images on screen 48
- dark screen 48
- dim screen 48
- flickering screen 49
- images are too large or too small 50
- images fail to appear on screen 48
- Monitors & Sound control panel (Mac OS) 52–55
- off-center images on screen 50
- overscan 55
- power 47, 48
- resolution settings 51, 54
- screen appearance 48–51
- snow on screen 51
- tilted images on screen 50
- wavy lines on screen 51
- white point 55
- turning the monitor on 16

## U

- unplugging the monitor 2
- updating Apple software 18
- user controls 66

## V

- vertical refresh rate 6, 66–67
- Vertical Shift option (Geometry menu, Windows) 41
- VESA standard modes 6
- VGA adapter 12, 13, 70
- video card
  - connecting monitor connector to 11
  - determining need for 6–7
- video connectors, connecting the monitor cable to 12
- video port 10
- viewable image size 1
- viewing angle, adjusting 8
- voltage requirements 67
- volume, adjusting (Mac OS) 30



**Can't Find It?**

**See also Macintosh**

**Guide's onscreen index.**

**Open the Guide ([?](#))**

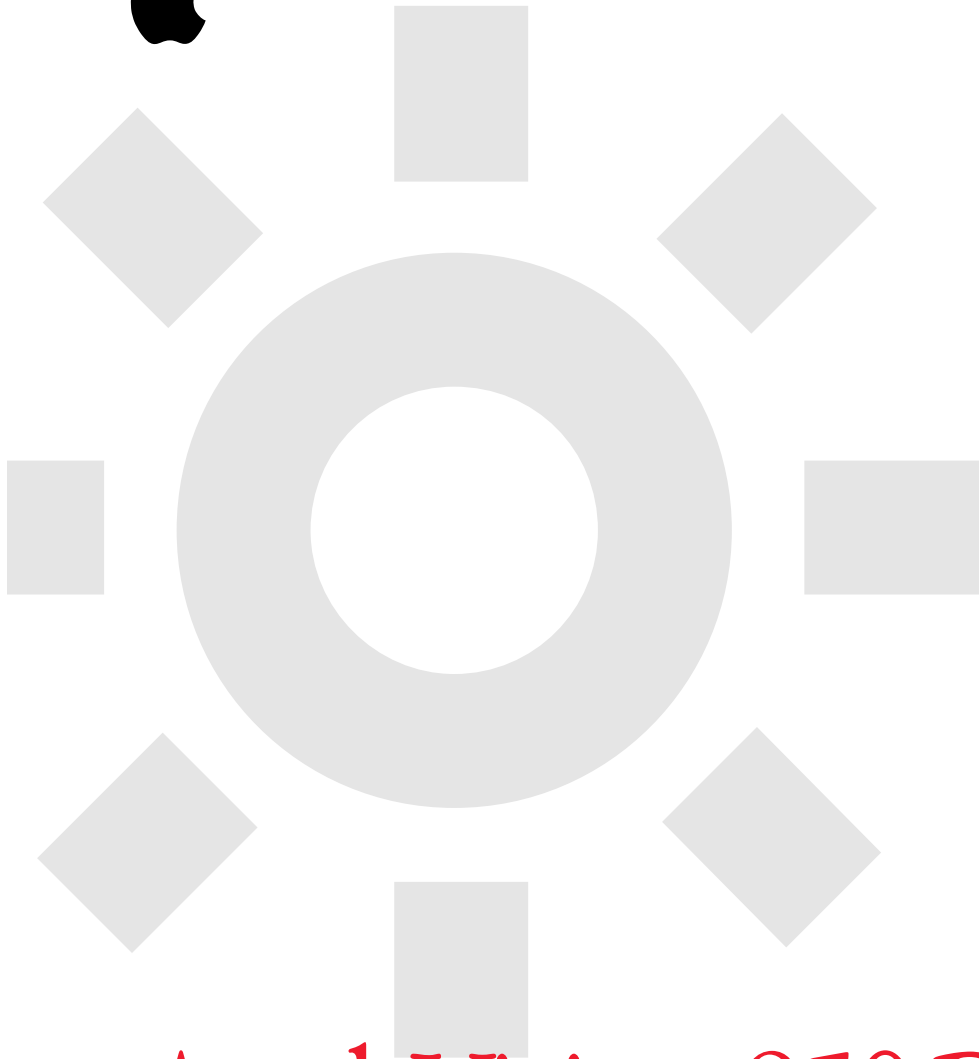
**menu and choose**

**Macintosh Guide; then**

**click the Index button.**

## W, X, Y, Z

- waking up the monitor (Mac OS) 36
- warranty 46
- wavy lines on screen 51
- weight of the monitor 67
- white point
  - setting (Mac OS) 30
  - troubleshooting (Mac OS) 55
- Width option (Geometry menu,  
Windows) 41
- Windows-based computers
  - adjusting color settings and other  
features 42–43
  - adjusting convergence 44
  - adjusting screen geometry 41–42
  - connecting the monitor cable to 13
  - installing AppleVision setup  
information for Windows 95  
38–39
  - using onscreen controls 40
  - using the monitor with 17, 37–44
  - video card for 7
- Windows 95, installing AppleVision  
setup information for 38
- World Wide Web sites provided by  
Apple Computer 18



# AppleVision 850 Display

*User's Manual*



 Apple Computer, Inc.

© 1997 Apple Computer, Inc. All rights reserved.

Under the copyright laws, this manual may not be copied, in whole or in part, without the written consent of Apple. Your rights to the software are governed by the accompanying software license agreement.

The Apple logo is a trademark of Apple Computer, Inc., registered in the U.S. and other countries. Use of the “keyboard” Apple logo (Option-Shift-K) for commercial purposes without the prior written consent of Apple may constitute trademark infringement and unfair competition in violation of federal and state laws.

Every effort has been made to ensure that the information in this manual is accurate. Apple is not responsible for printing or clerical errors.

Apple Computer, Inc.  
1 Infinite Loop  
Cupertino, CA 95014-2084  
408-996-1010  
<http://www.apple.com>

Apple, the Apple logo, AppleCD, AppleVision, ColorSync, LaserWriter, Mac, Macintosh, Macintosh Quadra, PlainTalk, and PowerBook are trademarks of Apple Computer, Inc., registered in the U.S. and other countries.

Finder and OneScanner are trademarks of Apple Computer, Inc.

Adobe, Acrobat, Adobe Illustrator, Photoshop, and PostScript are trademarks of Adobe Systems Incorporated or its subsidiaries and may be registered in certain jurisdictions.

Helvetica and Times are registered trademarks of Linotype-Hell AG and/or its subsidiaries.

NuBus is a trademark of Texas Instruments.

Pantone is a registered trademark of Pantone, Inc.

PowerPC is a trademark of International Business Machines Corporation, used under license therefrom.

Trinitron is a trademark of Sony Corporation, registered in the U.S. and other countries.

Simultaneously published in the United States and Canada.

Mention of third-party products is for informational purposes only and constitutes neither an endorsement nor a recommendation. Apple assumes no responsibility with regard to the performance or use of these products.



# Contents

- Communications regulation information vi
- 1 Setting Up Your Monitor 1**
  - Important safety and cleaning instructions 1
  - What about electromagnetic emissions? 3
  - Getting ready to set up your AppleVision 850 Display 4
    - Your AppleVision 850 Display at a glance 5
  - Do you need to install a video card? 6
    - Mac OS–based computers 7
    - Windows-based computers 7
  - Choosing a good location for your monitor 7
  - Positioning the monitor 8
  - Connecting the monitor to your computer 9
    - Connecting the power cord 10
    - Connecting the monitor cable to a Mac OS–based computer 10
    - Connecting the monitor cable to a Windows-based computer 13
    - Connecting a Mac OS–based computer keyboard and mouse to your monitor 14
  - Using more than one monitor 15
  - Turning the monitor on 16
    - Using the monitor with Windows-based computers 17

|  |           |
|--|-----------|
| Finding answers  | 18        |
| Obtaining online support and updated Apple software          | 18        |
| What to do next  | 19        |
| Mac OS–based computers                                       | 19        |
| Windows-based computers                                      | 19        |
| <b>2 Installing and Using AppleVision Software</b>           | <b>21</b> |
| Installing AppleVision software                              | 21        |
| Learning about AppleVision software with System 7.5 or later | 24        |
| Tips for using Monitors & Sound Guide                        | 25        |
| Learning about AppleVision software with System 7.1          | 26        |
| Screen controls at a glance                                  | 28        |
| About the Monitors & Sound control panel                     | 29        |
| Opening Monitors & Sound                                     | 29        |
| Monitors & Sound buttons at a glance                         | 30        |
| Tips for using AppleVision software                          | 31        |
| Using the Control Strip                                      | 32        |
| Using DigitalColor Meter                                     | 32        |
| Opening DigitalColor Meter                                   | 33        |
| Specifying colors using the Pantone Matching System          | 34        |
| Conserving energy  | 34        |
| Setting up Energy Saver                                      | 35        |
| What happens after you turn on the energy-saving feature?    | 36        |
| Using Energy Saver with a screen saver                       | 36        |
| <b>3 Using Your Monitor With Windows-Based Computers</b>     | <b>37</b> |
| Installing AppleVision setup information for Windows 95      | 38        |
| Screen controls at a glance                                  | 39        |
| Using onscreen controls                                      | 40        |
| Adjusting screen geometry                                    | 41        |
| Width  | 41        |



|   |           |
|---|-----------|
| Height  | 41        |
| Pincushion  | 41        |
| Vertical Shift  | 41        |
| Horizontal Shift  | 42        |
| Rotate  | 42        |
| Default   | 42        |
| Adjusting color settings and other features               | 42        |
| Color Temperature   | 43        |
| Overscan  | 43        |
| Scan Rate   | 43        |
| Degauss   | 43        |
| Adjusting convergence                                     | 44        |
| Vertical  | 44        |
| Horizontal  | 44        |
| <b>4 Tips and Troubleshooting</b>                         | <b>45</b> |
| Care and cleaning   | 45        |
| Protecting your monitor from theft                        | 46        |
| Troubleshooting common problems                           | 46        |
| Monitor power and screen appearance                       | 47        |
| Monitors & Sound control panel for Mac OS–based computers | 52        |
| <b>Appendix A Using ColorSync</b>                         | <b>57</b> |
| The problem that ColorSync solves                         | 57        |
| How ColorSync works                                       | 58        |
| Setting up ColorSync                                      | 60        |
| Setting the ColorSync System Profile                      | 61        |
| Tips for best results                                     | 62        |
| <b>Appendix B Technical Information</b>                   | <b>65</b> |
| <b>Index</b>  | <b>71</b> |

## Communications regulation information

### FCC statement

This equipment has been tested and found to comply with the limits for a Class A digital device, pursuant to Part 15 of FCC rules. These limits are designed to provide reasonable protection against radio interference when the equipment is operated in a commercial environment. This equipment generates, uses, and can radiate radio-frequency energy, and if not installed and used in accordance with Apple's instructions, may cause interference to radio communications. Operation of this equipment in a residential area is likely to cause such interference, in which case the user will be required to correct the interference at his or her own expense.

**IMPORTANT** Changes or modifications to this product not authorized by Apple Computer, Inc., could void the FCC verification and negate your authority to operate the product.

This product was tested for FCC compliance under conditions that included the use of Apple peripheral devices and Apple shielded cables and connectors between system components. It is important that you use Apple peripheral devices and shielded cables and connectors between system components to reduce the possibility of causing interference to radios, television sets, and other electronic devices. You can obtain Apple peripheral devices and the proper shielded cables and connectors through an Apple-authorized dealer. For non-Apple peripheral devices, contact the manufacturer or dealer for assistance.

### Industry Canada statement

This Class A device meets all requirements of the Canadian Interference-Causing equipment regulations.

Cet appareil numérique de la Class A respecte toutes les exigences du Règlement sur le matériel brouilleur du Canada.

### CISPR 22 statement

**IMPORTANT** This is a Class A product. In a domestic environment this product may cause radio interference, in which case the user may be required to take adequate measures.

### VCCI Class 1 statement

#### 情報処理装置等電波障害自主規制について

この装置は、情報処理装置等電波障害自主規制協議会（VCCI）の基準に基づく第二種情報技術装置です。この装置は、家庭環境で使用することを目的としていますが、この装置がラジオやテレビジョン受信機に近接して使用されると、受信障害を引き起こすことがあります。

取扱説明書に従って正しい取り扱いをしてください。