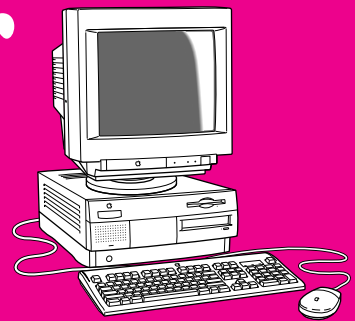




Welcome to Your AppleShare Server

*Workgroup Servers
7350 and 9650*



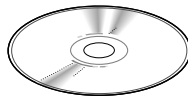
To get started



Fill out and send in your registration card. This enables us to send you product news and upgrade information.



Read the service and support information for your server. The Apple support information tells you how to obtain support for your Workgroup Server. The software license agreement and hardware warranty card describe the rights and responsibilities that apply to using your Workgroup Server.



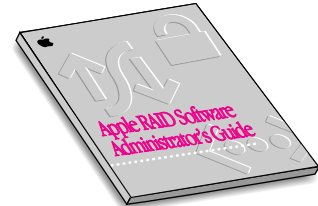
Store your *Workgroup Server Software* CD-ROM disc in a place where it is easy to find. This disc contains Workgroup Server software, system software and electronic documentation, which are also provided on your server's hard disk.

See your packing list for a complete list of hardware and software that came with your Workgroup Server.

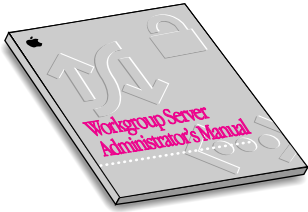
To set up your server



Set up and expand your server according to the instructions in the *Setting Up* manual. Follow the steps in this manual to add internal and external devices to your server, and to connect the server to the network. Also use this manual to confirm the technical specifications for your server.



Apple RAID Software, which is included on your server's hard disk and on the *Workgroup Server Software* CD-ROM disc, provides disk mirroring (RAID 1) for increased data reliability, and data striping (RAID 0) for increased performance. You must set up RAID software prior to setting up any other software on your server. Refer to the *Apple RAID Software Administrator's Guide* and the *Update: About Apple RAID Version 1.5* for detailed instructions.



Configure and learn about system software for your server by reviewing the *Workgroup Server Administrator's Manual*. After setting up your server's hardware, see this manual for details on configuring and using the Mac OS and application programs, for troubleshooting information, and to learn about your server's built-in CD-ROM drive.



Workgroup Server Read Me

Review the Workgroup Server Read Me for important late-breaking news. The icon for this Read Me file appears after you start up your server. The file contains important news about software installation, hardware setup, and troubleshooting.

For more information



Learn more about the system software installed on your server. The Guide menu, which appears in the upper-right corner of your server's screen, is an electronic assistant that guides you through tasks by offering step-by-step instructions and helpful prompts. Use Mac OS Guide when you have questions or encounter problems with your system software.

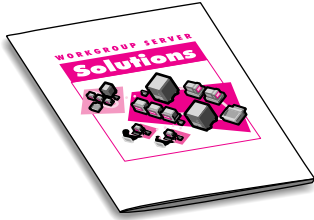


WS Electronic Library

Read your server documentation onscreen. You'll see the Workgroup Server Electronic Library folder on your server's hard disk. This folder contains electronic versions of printed manuals included with your server. You can use the Adobe™ Acrobat™ program that is included on your CD-ROM disc to view these documents onscreen.

To use your network services and application software

Your Workgroup Server comes with a selection of network services and application software. The order in which you install and start server applications is important, so be sure to review the documentation for all of the server application programs that you plan to use before installing or running them.



The *Workgroup Server Solutions 3.0* CD-ROM disc contains software that lets you explore the advantages of your Workgroup Server. This CD-ROM disc includes fully functional applications from companies that provide innovative software for server administrators and network users. The server administration tools and user productivity programs provided on this disc emphasize additional ways that you can use your server, network, and desktop computers to enhance workgroup productivity.



If your server came with a DDS-2 digital audio tape (DAT) drive, you

received the Retrospect Remote software, which lets you schedule and maintain backups of the files on your Workgroup Server and on other Macintosh computers on your network.



AppleShare, which is server software for workgroup file and print services, may already be installed on your server's hard disk. AppleShare provides shared file storage for an entire workgroup; full-featured, effective security; and queued access to networked printers. AppleShare allows users to run multiple server applications simultaneously and provides full support for Macintosh and Windows client software. The AppleShare kit includes Santorini Server Manager software, which lets you monitor and administer multiple AppleShare servers from any Macintosh computer on your network, and

AppleShare Client for Windows, allows Windows users to share files and print to network printers on AppleTalk networks.



The PCI Ultra SCSI JackHammer•SE card is an accelerated Ultra SCSI-3 host adapter that improves performance between your server and SCSI devices attached to the card.

If your server came equipped with a JackHammer•SE card, you received the JackHammer software, which lets you configure the JackHammer card, and the *JackHammer User Guide*, which includes technical specifications and troubleshooting information about the card.