

1

Setting Up Your Printer



This chapter introduces the Apple Color StyleWriter 2500 printer and explains how to set it up. After you follow the instructions in this chapter, you'll be ready to print.

Before you begin Make sure that your computer is already set up and that you know the basics of its operation.

Important safety instructions

Always take the following precautions:

- Keep the printer cover closed when printing.
- Always turn off the printer before unplugging it.
- Keep the ink tanks and ink cartridges away from children.
- Keep the printer away from sources of liquid, such as wash basins, bathtubs, and shower stalls.
- Protect the printer from dampness or wet weather, such as rain and snow.
- Read all the installation instructions carefully before you plug the printer into a wall socket.
- Keep these instructions handy for reference by you and others.
- Follow all instructions and warnings dealing with your computer system.

- Don't use devices that produce open flames, such as Bunsen burners, near the printer.
- Don't use alcohol-based or ammonia-based cleaners on or around the printer.
- Always unplug the printer before cleaning it. (Use only the cleaning procedure recommended in Chapter 4.)
- Clean the outside of the printer with only a damp cloth and, if necessary, a mild soap or detergent. Be careful not to get liquid into the printer or the power cord receptacle.

IMPORTANT The only way to disconnect power completely is to unplug the power cord. Make sure at least one end of the power cord is within easy reach so that you can unplug the Color StyleWriter 2500 when you need to.

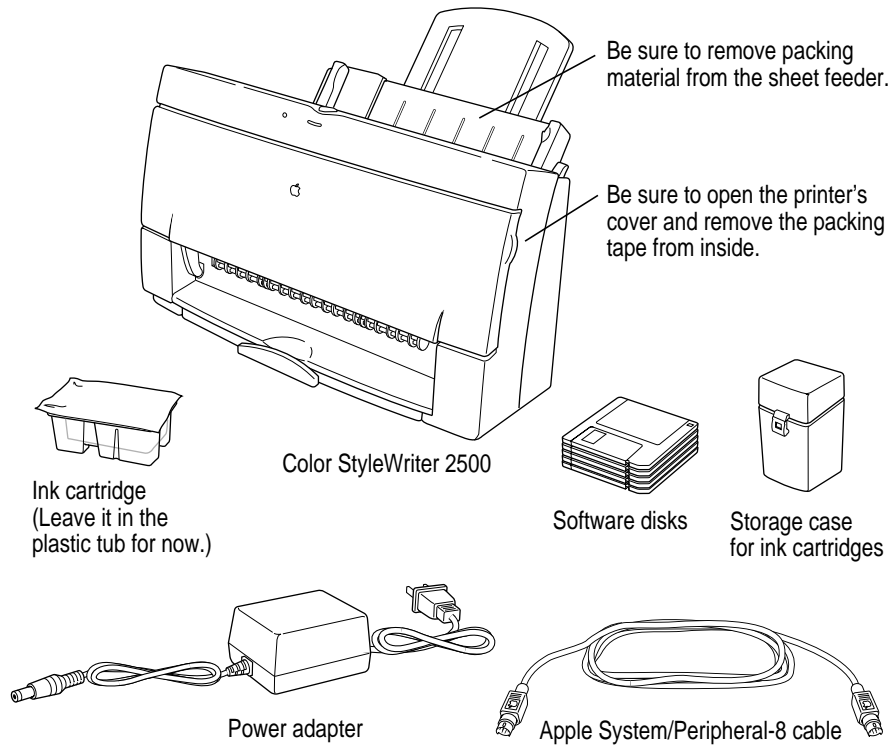
Watch for these situations, and if one occurs pull the plug!

- the power cord or plug becomes frayed or otherwise damaged
- you spill something into the printer
- the printer is exposed to rain or any other excess moisture
- the printer has been dropped or otherwise damaged
- you suspect that your printer needs service or repair

WARNING Electrical equipment may be hazardous if misused. Operation of this product, or similar products, must always be supervised by an adult. Do not allow children access to the interior of any electrical product and do not permit them to handle any cables.

Unpacking the printer

- 1 Remove everything from the shipping box, but leave the ink cartridge in its package.



- 2 Remove the tape and packing material from the inside and outside of the printer.
Save the carton and the packing material in case you ever need to ship the printer. (See Appendix G, "Packing and Moving the Printer.")
- 3 Close the printer's cover.

4 Place the printer in your work area.

Choose a location near your computer that has a grounded electrical outlet and good ventilation, is out of direct sunlight, never gets damp or very hot or very cold, and is away from devices that could cause electromagnetic interference, such as stereo speakers or cordless telephone transmitters. Do not place the printer on a slanted surface. See Appendix A, “Technical Information,” for specific information about the physical requirements of your printer.

IMPORTANT Don't accidentally discard the ink cartridge storage case. You need it to store an opened cartridge that you're not using in the printer. The case keeps the print head from drying out and prevents accidents with ink stains.

If you print only a few color images, and most of your printing is in black, you can purchase a high-performance black ink cartridge and use it as an alternative to the color ink cartridge. When either cartridge is not in the printer, keep the cartridge in the storage case.

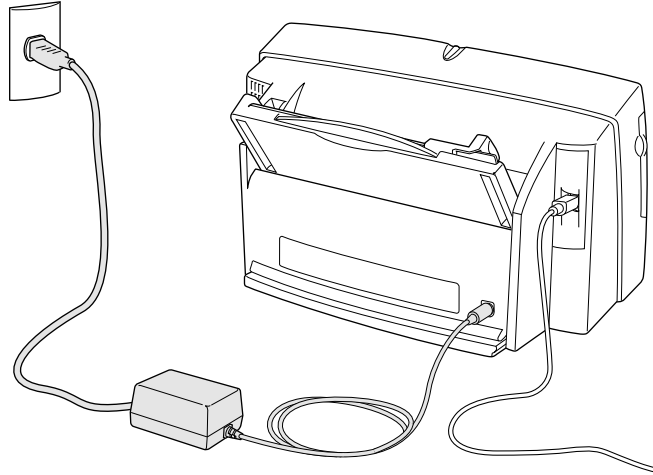
You can use the same ink cartridge in both a Color StyleWriter 2400 and a Color StyleWriter 2500.

Power Macintosh users and Virtual Memory

If you are using a Power Macintosh computer, be sure to turn on Virtual Memory before you try to print on the Color StyleWriter 2500. Then choose a setting that's at least 1 MB higher than your “Available built-in memory.” (You can set it higher without any ill effects.) With this setting, you will avoid some potential printing problems. Turning on Virtual Memory also reduces the amount of memory needed by many applications. For instructions on turning on Virtual Memory, see the documentation that came with your computer.

Plugging in the printer

Plug the connector end of the power adapter into the printer and then plug the other end of the adapter into an outlet.



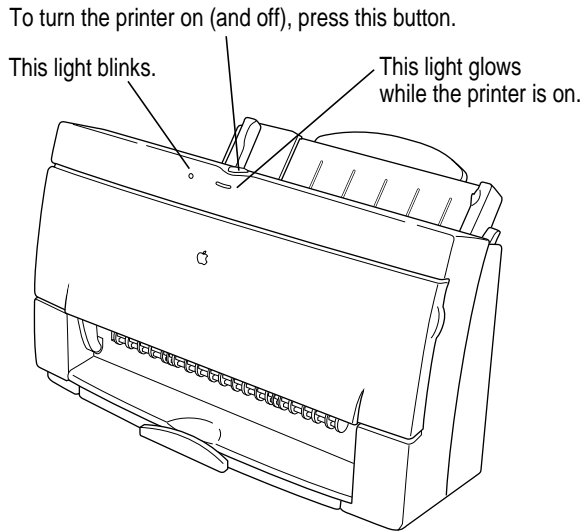
IMPORTANT The only way to disconnect power completely is to unplug the power cord. Make sure that at least one end of the power cord is within easy reach so that you can unplug the printer in an emergency.

WARNING This Color StyleWriter is designed to work with the electrical system of the region in which you purchased it. It works with only one frequency of electricity, either 50 or 60 Hz. The label on the adapter you received with your printer indicates the frequency required.

The label on the adapter also indicates the voltage required. If you are using the printer in a region with a different voltage but the same frequency as that listed on the adapter, you must use a voltage converter to provide the voltage value indicated on the adapter label.

Serious damage to the printer will result from using the Color StyleWriter adapter with an improper electrical frequency or improper voltage converter. Damage resulting from such misuse of the printer is not covered under warranty.

Turning the printer on and off



The first time you turn on the printer, the green power light glows and the yellow error light blinks because you haven't installed an ink cartridge yet.

Saving energy

To save power, the printer turns itself off after sitting unused for about 5 minutes. As long as you leave it plugged into an active power outlet, the printer turns itself on automatically when you print something.

WARNING Except in an emergency, make sure the printer is turned off before you unplug it. (When the power light is off, the power is off.) If the printer is plugged into a power strip, never turn off the power strip unless you've already turned the printer off.

Each time you turn off the printer, or the printer turns itself off, it automatically moves the ink cartridge to the right, where it caps the nozzles to keep the ink cartridges from drying out. If you unplug the printer or discontinue power before turning it off, the printer can't position the cartridge in the capped position, the print head may dry out, and you'll have to replace the cartridge.

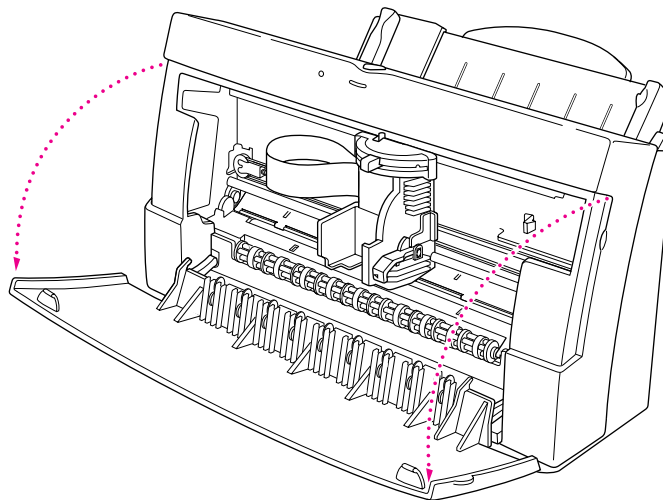
Installing the ink cartridge

The ink cartridge contains the print head, which sprays the ink onto the paper. Treat it gently so you don't damage its tiny nozzles.

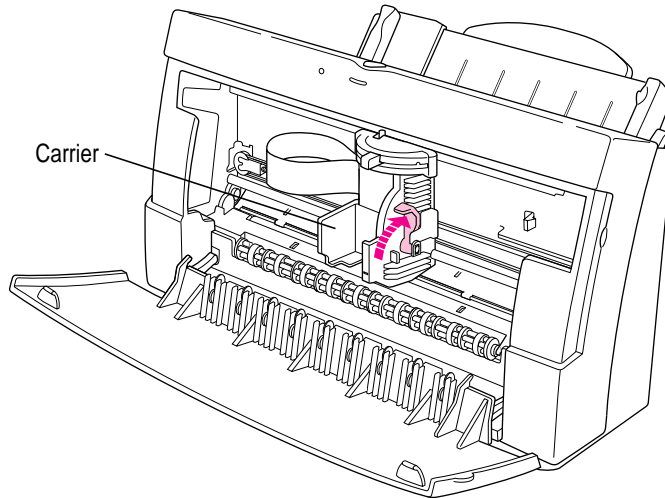
WARNING The carrier holds the ink cartridge and moves it back and forth when you are printing a document. When the printer is plugged in, don't slide the carrier by hand or you may damage the printer.

Before you start, make sure the printer is turned on. (The green light glows, and the yellow light blinks.)

- 1 Open the printer by pulling down its front cover.



- 2 Raise the bright blue lever on the carrier.**



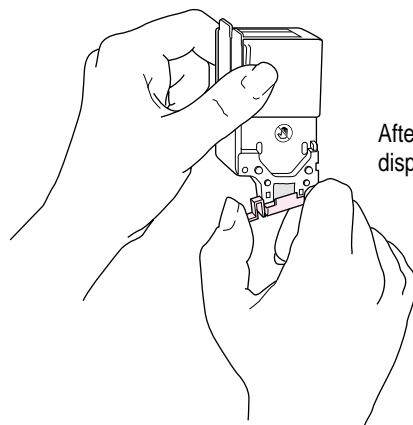
- 3 Remove the cover from the plastic tub that contains the ink cartridge.**

These instructions show the four-color cartridge being installed, but the process is the same for either cartridge. (You can buy a high-performance black ink cartridge in addition to the color cartridge.)

- 4 Grasp the ink cartridge by its sides and remove it from the plastic tub.**

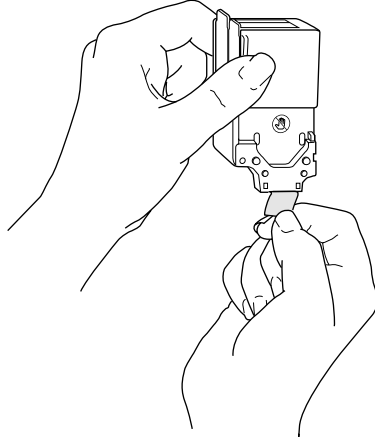
You may safely touch the black plastic, but be careful not to touch any other part.

- 5 Remove the bright orange cap from the cartridge's print head.**

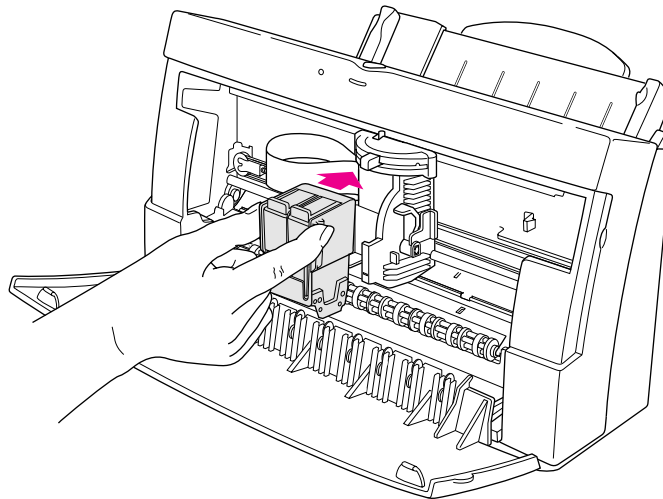


After you snap it off, dispose of the cap.

- 6** Peel the orange tape off the print head.

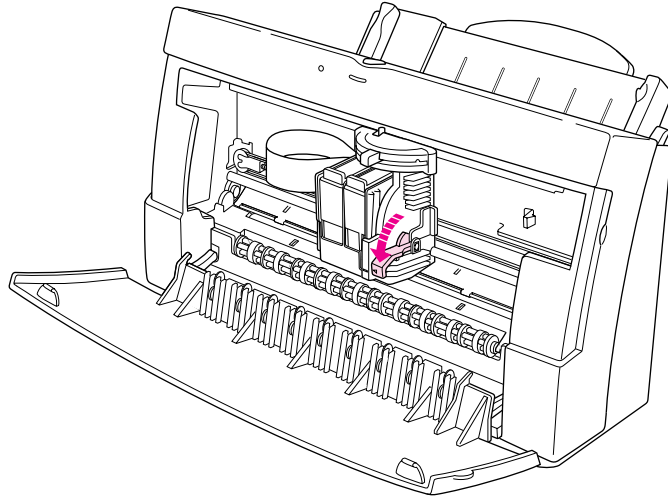


- 7** Slide the ink cartridge into its place in the printer.



Note: There are instructions inscribed inside the printer cover to remind you how to install either the color or optional high-performance black ink cartridge.

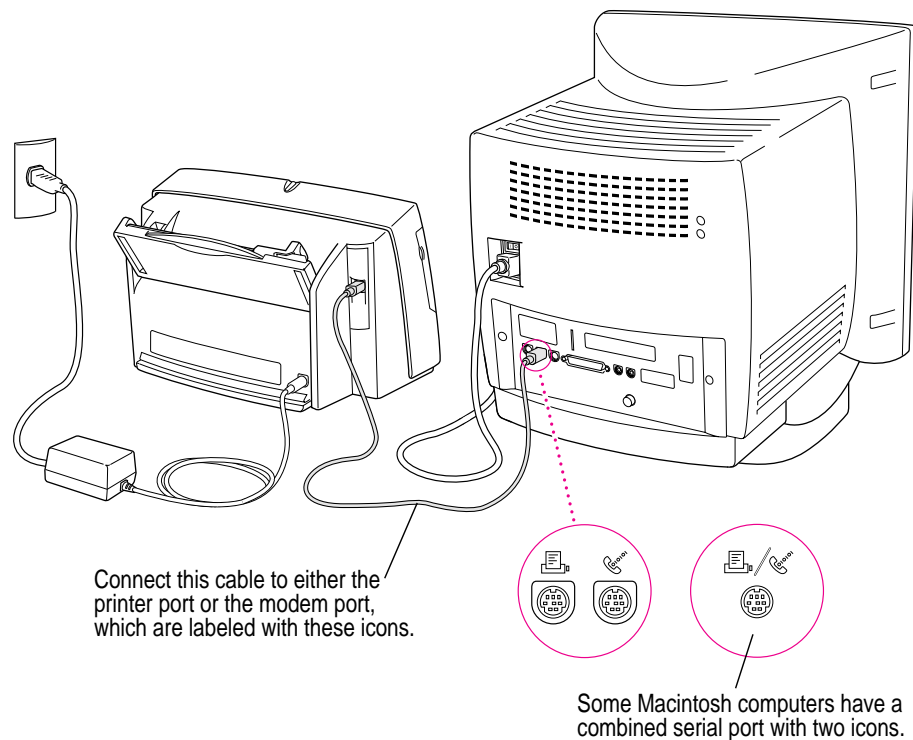
- 8 Lower the bright blue lever on the carrier to secure the ink cartridge in place.



- 9 Close the printer's front cover.

Connecting the printer to your Macintosh

IMPORTANT Even if you're planning to share the printer over a network, the serial cable must connect the printer directly to the computer. Use only the cable that comes with the printer or a similar replacement. Do not use a LocalTalk cable unless you purchased the LocalTalk Option for this printer (in which case you should see the instructions that came with the option).



If your computer is connected to a network, a network cable may already be connected to the printer port (🖨️). In that case, use the modem port (📠).

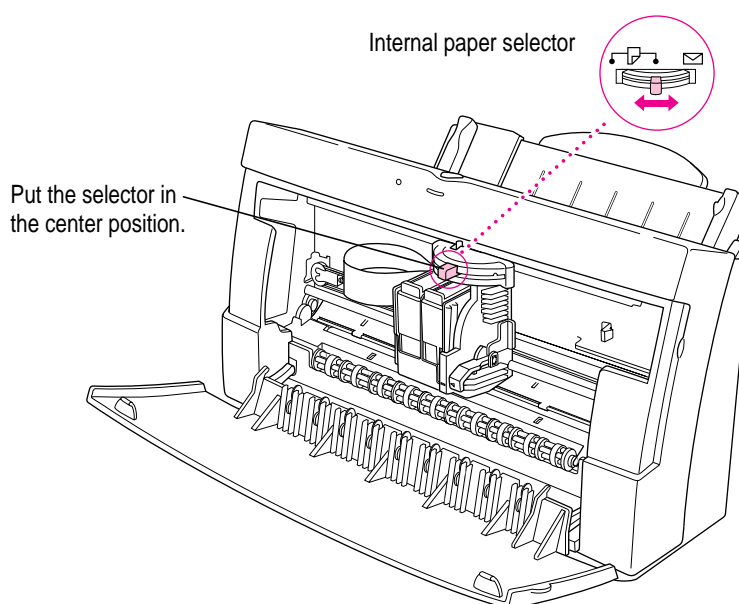
Remember which port you use. Later you must tell the printer software where to look for the printer.

Some PowerBook computers that have an internal modem installed cannot tell that the printer is plugged in. You must change a setting in the PowerBook Setup or Express Modem control panel. For details, see “Special Information for PowerBook Owners” in the section “Telling Your Computer to Use the Color StyleWriter 2500,” later in this chapter.

Loading paper into the sheet feeder

The sheet feeder holds up to 100 sheets of 20-pound paper and feeds the paper automatically into the printer. You can load many sizes of paper and other media into the sheet feeder as described in Chapter 2, but to do a nozzle check, as described in the next section, you must use U.S. letter-size or A4 paper. To load paper into the sheet feeder, follow these steps:

- 1 **Open the printer cover.**
- 2 **Adjust the internal paper selector.**



- 3 **Close the printer cover.**

4 Load a stack of U.S. letter-size or A4 paper into the sheet feeder.

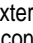
Instructions for loading paper correctly appear on the paper support. Information on the back of the paper tray shows you where to set the guide for different paper sizes.

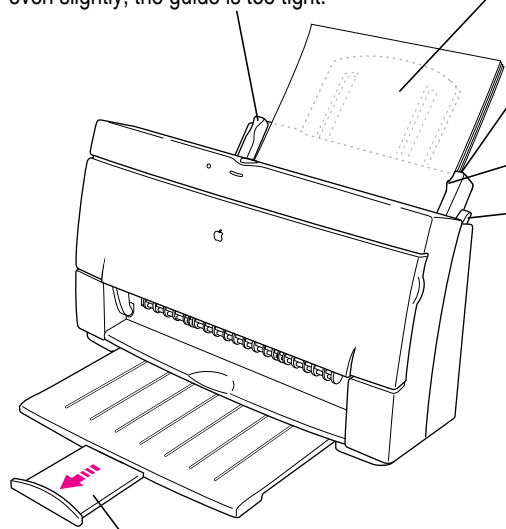
Slide this guide so it just touches the edge of the paper. If the stack of paper bows out even slightly, the guide is too tight.

Extend this paper support. Make sure the paper extends above the support (and doesn't slide down inside the printer).

Make sure the paper lines up evenly at this side of the feeder.

Do not stack paper above this line (≡).

Make sure the external paper selector is next to the  icon.



To open the output tray, pull here. Be sure to pull it out all the way. If you're printing on legal-size paper, don't open the tray.

Installing your printer software

Before you can print your documents, you need to install the printer software on your Macintosh. The disks that come with the Color StyleWriter 2500 contain the printer software and an Installer program.

The Installer program installs the new printing software you need, plus any fonts that come with the printer (see Appendix C for a list of available fonts). If you use Apple's special QuickDraw GX software, it will also install new QuickDraw GX software for the Color StyleWriter 2500.

Note: If you ever upgrade your system software (for example, from System 7.1 to System 7.5), you must reinstall the Color StyleWriter 2500 software.

Step-by-step installation instructions

These instructions tell you how to restart your computer with the extensions turned off (which prevents incompatible software from interfering with the installation) and how to use the Installer program.

Before you begin Lock all the disks by turning each one over and sliding the small, square plastic tab in the corner so you can see through the hole. (The disks may already be locked.)

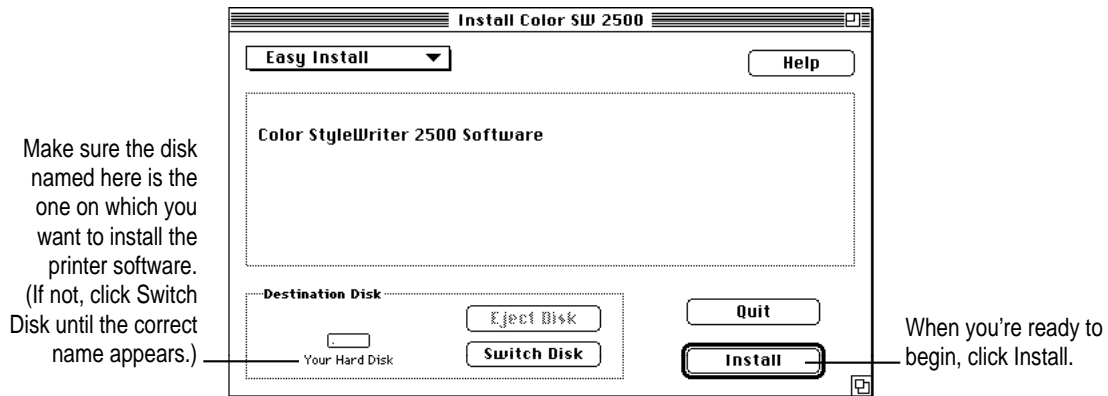
- 1** Quit any programs you are running.
- 2** While holding down the Shift key on the keyboard, choose Restart from the Special menu. Don't release the Shift key until you see the "Extensions off" message on your screen.
- 3** After you see the Macintosh desktop, insert *Color StyleWriter 2500 Disk 1* into a floppy disk drive.
- 4** To start the Installer program, double-click its icon.

You may have to open the disk icon to see the Installer icon.

- 5 In the Welcome dialog box that appears, click Continue.

IMPORTANT The Installer determines whether you have the correct system software, and enough memory and hard disk space to use this printer. If you don't, the Installer displays a message telling you what you need. You won't be able to install the printer software until you correct the system software or memory problem. If the message reports a problem, you can purchase new system software or memory from an Apple-authorized dealer, or make space available on your hard disk by throwing away files you don't need.

- 6 In the Installer dialog box, click Install.



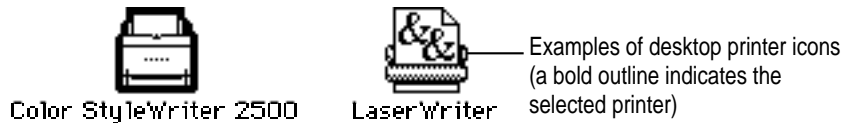
After a few moments, the Installer begins to install the printer software. A status box keeps you informed of progress during installation.

- 7 When you see a message on your screen, follow the directions and insert the next disk.

The Installer ejects disks and asks you to insert others. Keep following the instructions on the screen until the installation is complete.

8 When you see a message reporting that installation was successful, click Restart.

The Installer restarts your computer. After you restart, you may notice on your desktop, a new icon that represents a printer. It's called a desktop printer, and it looks like this. For information about desktop printers, see "Desktop Printing" in the sections "Printing a Document" and "Monitoring and Controlling Background Printing" in Chapter 2.



If this is your first printer, you won't see a desktop printer icon yet.

9 After the computer restarts, you must select the printer in the Chooser, as described in the next major section, "Telling Your Computer to Use the Color StyleWriter 2500."

Installation troubleshooting

If the Installer can't complete the installation, it will issue a warning message. Here are some ways to fix common problems:

- You may not have the correct hardware or system software for this printer. If so, the Installer will tell you what you're missing.
- You may have forgotten to turn off your software extensions as described in the previous section.
- You may have some corrupted fonts on your hard disk. To solve this problem, see "Installation Is Unsuccessful" in Chapter 5.

More information about the Installer program

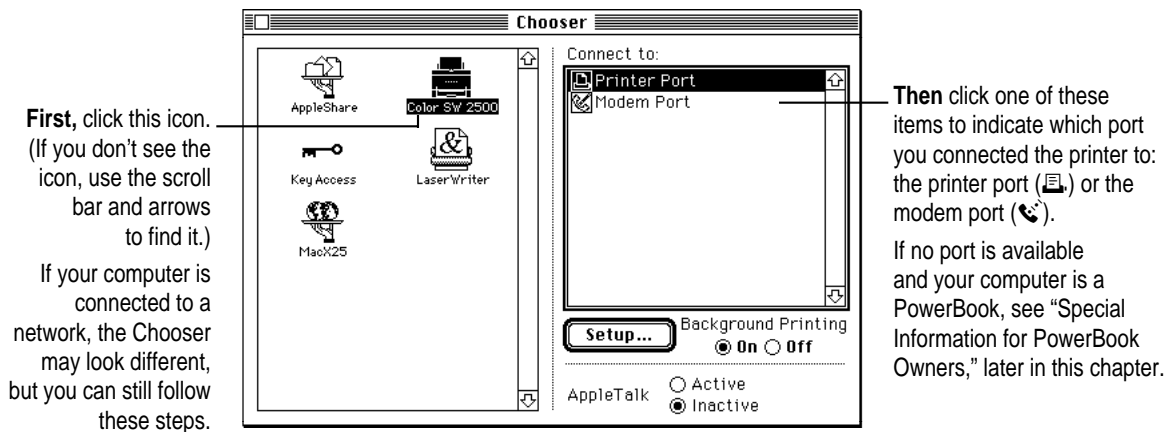
In the procedure just described the Installer copies all the software you need to your hard disk. In rare circumstances you may want to copy only a subset of the software. In that case choose Custom Install from the pop-up menu in the Installer. When a list of choices appears, select the items you wish to install, then click the Install button. (Click the letter *i* to the right of any of the choices for information.)

Telling your computer to use the Color StyleWriter 2500

Before using your printer, you must select it in the Chooser.

- 1 Select Chooser from the Apple () menu.
- 2 In the Chooser dialog box, click the appropriate items to select them.

On most Macintosh computers, the Chooser looks like this:



- 3 Close the Chooser by clicking the close box in its upper-left corner.
- 4 Notice the new desktop printer icon for the Color StyleWriter 2500.

After you close the Chooser, a desktop printer icon for the Color StyleWriter 2500 appears on the desktop.



Color StyleWriter 2500

This icon cannot be moved off the desktop (unless you throw it away); however, you can place it anywhere on the desktop that you like.

Special information for PowerBook owners

PowerBook computers that have internal modems may require special setups. What you do depends on whether the Powerbook has one or two serial ports on its back panel.

PowerBook computers with one serial port

Some PowerBook computers have a single serial port identified by a combination printer/modem icon (⌘/📠). If an internal modem is installed on one of these PowerBook computers, the serial port may be in use even though it looks available. When you plug in the Color StyleWriter 2500, the PowerBook may not be able to communicate with the printer.

To make the port available for printing, make sure the serial port setting is Normal or External. To check the setting, open the PowerBook, PowerBook Setup, or Express Modem control panel. (If you have another kind of internal modem, you may have a different control panel. The control panel and the setting you use depend on which PowerBook you have and which internal modem you have.) If you have a PowerBook Express Modem, it is best to leave the serial port setting as Normal or External unless the modem programs you use require another setting for compatibility reasons.

PowerBook computers with two serial ports

Even when a PowerBook has two serial ports, if it also has an internal modem, the modem port (📠) may look available but actually be in use. If the printer port (⌘) is available, connect the Color StyleWriter 2500 to it. If the printer port is unavailable and you must use the modem port, make sure the modem serial port setting is Normal or External. To check the setting, open the PowerBook, PowerBook Setup, or Express Modem control panel. (If you have another kind of internal modem, you may have a different control panel. The control panel and the setting you use depend on which modem and system software version you have.) If you have a PowerBook Express Modem, it is best to leave the serial port setting as Normal or External.

For more information, see the instructions that came with your PowerBook.

Printing a document to make sure everything's working

The best way to see if your printer is set up correctly is to try printing something. The following steps describe how to print the Color SW 2500-Troubleshooting file that was installed on your hard disk, but you can print any document you want.

Before you begin Return to the Finder by quitting any programs you're running.

1 Find the Color SW 2500-Troubleshooting file.

Unless you moved it, you can find the file by double-clicking your hard disk icon.

2 Open the file by double-clicking its icon.

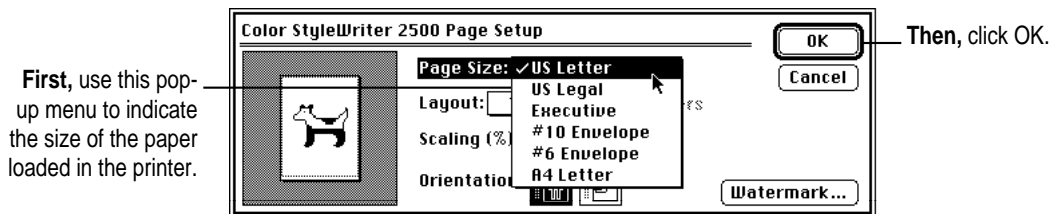


Color SW 2500-Troubleshooting

3 Choose the Page Setup command from the File menu.

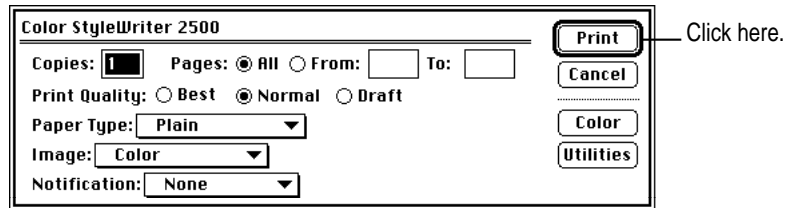
A dialog box opens.

4 Indicate what paper size you're using.



You don't need to choose the Page Setup command every time you print—you only need to use it when you want to change the normal settings. Look at the dialog box on your screen to note what the normal settings are. For information about the options in this dialog box, see “Printing a Document” and “Creating Special Effects on the Color StyleWriter 2500” in Chapter 2.

- 5 Choose the Print command from the File menu.
- 6 In the dialog box that appears, click the Print button.



After a few moments, the printer begins printing the page or pages. If there's a problem, see Chapter 5 for suggestions. (The most common problem is failing to follow the instructions in “Telling Your Computer to Use the Color StyleWriter 2500,” earlier in this chapter.)

For information about all the choices you can make in the Print dialog box, see “Printing a Document” and “Creating Special Effects on the Color StyleWriter 2500” in Chapter 2.

- 7 Choose Quit from the File menu to leave the Color SW 2500-Troubleshooting file.

Checking the print nozzles

The Color StyleWriter 2500 prints by spraying ink onto the paper through tiny nozzles. Sometimes these small nozzles get clogged after sitting unused for a long time. To make sure all the nozzles are working, follow these steps:

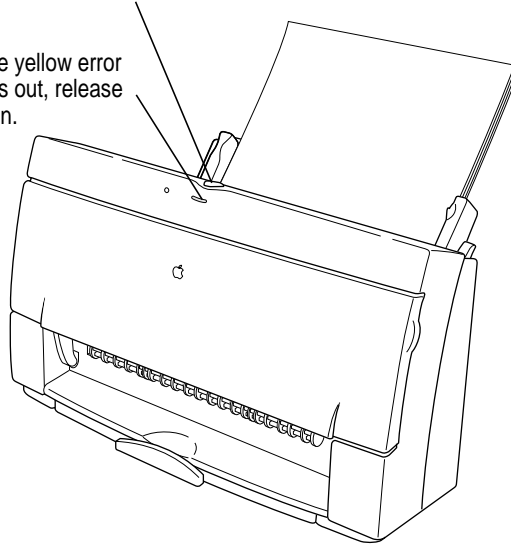
- 1 If necessary, turn off the printer.**

The green power light should be off.

- 2 Press and hold down the power button for about 5 seconds, until the yellow error light goes out.**

Press the power button.

When the yellow error light goes out, release the button.



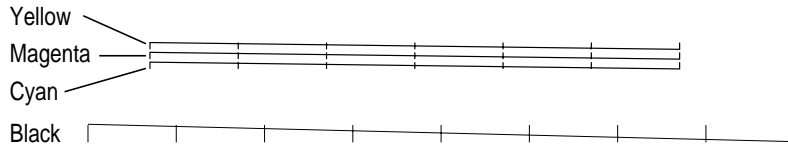
- 3 Release the button and wait for the test page to print.**

4 Examine the nozzle test pattern for broken or missing horizontal lines.

The nozzle test pattern appears near the bottom of the test page. The test pattern for the four-color ink cartridge looks like this:

A broken line means a nozzle on the print head needs to be cleaned.

A missing color means you need to replace an ink tank (or the black-only cartridge).



The test pattern for the optional black-only ink cartridge looks like this:



5 If you see a broken line, one or more nozzles may be clogged. See the section “Cleaning the Print Head” in Chapter 5.

What's next?

You're now ready to start using your printer.

- If you want to share the printer with others on your network, see “Sharing Your Printer With Other Users” and “Printing on a Shared Color StyleWriter 2500” in Chapter 2. If you purchased the LocalTalk option for this printer, see “Connecting a Color StyleWriter 2500 to a LocalTalk or EtherTalk Network” in Chapter 2.
- If you have installed QuickDraw GX and turned it on, see Appendix E.

2

Printing



This chapter explains how to use the Color StyleWriter 2500 for everyday tasks. Before you follow the instructions in this chapter, make sure the printer is set up and working, as described in Chapter 1.

Note: If you use QuickDraw GX, not all of the instructions in this chapter will apply to your software. See Appendix E for more information.

Planning documents with the Color StyleWriter 2500 in mind

Many printer options affect how much can fit on a page. Before you spend a lot of time laying out a document, set it up as you plan to print it:

- 1 Select the printer you plan to use.**

See “Switching Between Printers,” later in this chapter.

- 2 With the document active on your computer screen, choose Page Setup from the File menu and select the options you like.**

The key areas that affect page layout are paper size, orientation, and scaling percentage. When you’ve finished setting your options, click the OK button to return to your document. You can now format it as you like. Since you’ve already set your printing options, the document will print as you see it on your screen.

Loading the sheet feeder

The sheet feeder holds paper, envelopes, or other materials and feeds them automatically into the printer. To load the sheet feeder, follow these steps:

- 1 Remove any paper or other materials that you don't want to use.
- 2 Adjust the external paper selector, as shown in the next step.

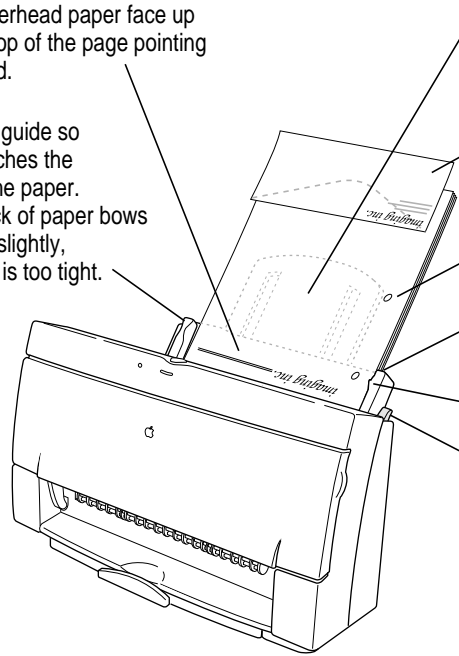
It's important to adjust the selector before loading the new material into the sheet feeder.

- 3 Load the paper or other materials.

IMPORTANT Don't mix envelopes with paper in the feeder.

Insert letterhead paper face up with the top of the page pointing downward.

Slide this guide so it just touches the edge of the paper. If the stack of paper bows out even slightly, the guide is too tight.



Extend this paper support. Make sure the paper extends above the support (and doesn't slide down inside the printer).

Insert envelopes this way. (Make sure the flap is smoothed flat.)

Insert three-hole punched paper so that the holes line up along this side.

Make sure the paper lines up evenly at this side of the feeder.

Don't stack paper above this line (△).

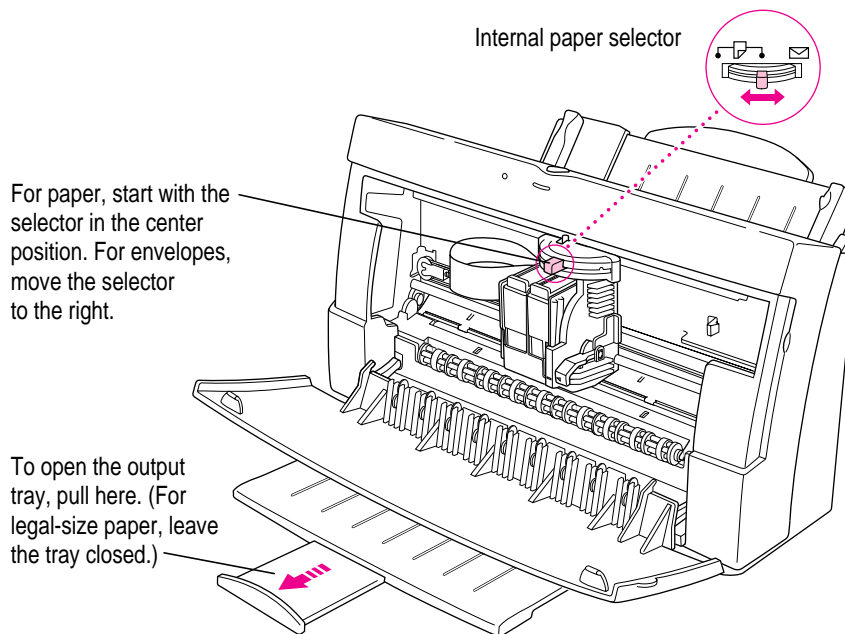
Before inserting the material, move the paper selector lever to the envelope icon (✉) for envelopes and to the paper icon (📄) for everything else.

4 Open the printer's front cover.

Wait while the carrier moves to the center position.

5 Adjust the internal paper selector and extend the output tray.

The lever has three positions (two for paper, one for envelopes). In the paper (☐) positions, the lever lowers the ink cartridge, bringing it closer for thin materials; in the envelope (✉) position, the lever raises the cartridge to leave room for thick materials. The far-left position is best for black-and-white text on 20-pound paper; the center position is best for color printing, for heavy black ink coverage, or for heavier paper.



6 Close the printer cover.

7 Before you print, make sure that you set the software options to indicate the size and kind of material you're using.

- In the Page Setup dialog box, indicate the size of the page.
- In the Print dialog box, indicate the paper type.

Here are details about the kinds of materials you can use in your Color StyleWriter 2500 printer.

Print material	Maximum	Special instructions
Plain paper	100 sheets	<ul style="list-style-type: none"> ■ Use 16- to 24-pound paper.
Premium coated paper	50 sheets	<ul style="list-style-type: none"> ■ Use only paper designed for this printer. ■ The whiter side should face you.
Premium Plus Coated Paper	50 sheets	<ul style="list-style-type: none"> ■ Use only paper designed for this printer. ■ The whiter side should face you.
Glossy paper	20 sheets	<ul style="list-style-type: none"> ■ Use only paper designed for this printer. ■ To prevent misfeeds, put one sheet of plain paper at the back of the stack. ■ The shinier side should face you.
Transparencies	20	<ul style="list-style-type: none"> ■ Use only transparencies designed for this printer. ■ The shiny side should face you. ■ The edge where the paper and transparency are joined should point downward.
Back-print film	20 sheets	<ul style="list-style-type: none"> ■ Use only film designed for this printer. ■ To prevent misfeeds, put one sheet of plain paper at the back of the stack. ■ The chalky side should face you.
Envelopes	15	<ul style="list-style-type: none"> ■ Make sure the envelope flap is folded down flat.
Labels	20 sheets	<ul style="list-style-type: none"> ■ To prevent misfeeds, put one sheet of plain paper at the back of the stack. ■ The labels should face you. ■ In the Print dialog box, specify Plain as the paper type.

The Color StyleWriter 2500 supports only the following sizes of materials: U.S. Letter, U.S. Legal, A4 Letter, Executive, #6 envelopes, and #10 envelopes. Don't attempt to use other size materials, or printing errors may result.

For more information about the kinds of materials you can use with the Color StyleWriter 2500, see Chapter 3, "Tips on Paper, Quality, Speed, and Cost."

Notes about envelopes

See the instructions that came with the programs you use to see if they offer special, easy ways to format and print envelopes. If not, choose the envelope size you're using in the Page Setup dialog box and format the envelope text as you like.

Printing a document

The next three sections explain the different ways you can print a document:

- **Quick instructions for printing standard documents.** To print documents that don't require any special options, see this section. (The section describes what a "standard document" is.)
- **Detailed instructions for printing other documents.** To print documents that require any of the nonstandard options, see this section.
- **Desktop printing.** To print documents without leaving the Finder, see this section. Desktop printing allows you to quickly send multiple documents to multiple printers.

Quick instructions for printing standard documents

Follow the instructions in this section to print a standard document:

- standard paper size (8.5" by 11" in the United States)
- plain paper
- portrait page orientation (so when you look at the printed page, it is longer than it is wide)
- no special effects and normal print quality

Assuming you have already selected the printer in the Chooser as described in Chapter 1, and that the printer is filled with standard paper, you need only follow these steps:

- 1 **While the document is in an active window, choose the Print command from the File menu.**

The Print dialog box opens on your screen.

2 Click the Print button.

If the printer is off, it automatically turns itself on and, after a few moments, the document starts to print. If background printing is turned on, you can continue working while the document is printing. You can also monitor and control the documents that are waiting to print. (See “Printing While You Use Your Computer” and “Monitoring and Controlling Background Printing,” later in this chapter.)

Detailed instructions for printing other documents

If your document is not standard (as defined in the previous section), follow these steps:

1 If you haven't already selected the Color StyleWriter 2500 in the Chooser, do so now.

You already selected the Color StyleWriter 2500 in Chapter 1, and if it's the only printer you ever use, you won't need to do it again. If you do need to switch, see “Switching Between Printers,” later in this chapter.

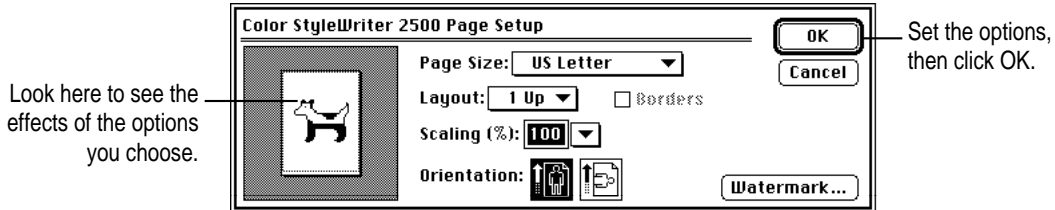
2 Load the paper, envelopes, or other materials into the printer, as described in “Loading the Sheet Feeder,” earlier in this chapter.

Remember to adjust the external paper selector before filling the sheet feeder.



- 3 While the document is active on your screen, choose **Page Setup** from the **File** menu and make adjustments in the dialog box that opens.

If the default settings shown here are satisfactory, you can skip this step.

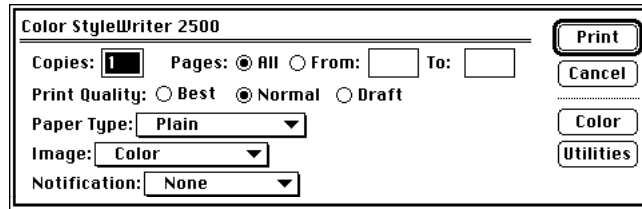


Item in dialog box	What you use it for
Page Size	Indicate the size of paper in the sheet feeder.
Layout	Print 2 or 4 mini pages per sheet of paper.
Borders	Put a border around the mini pages.
Scaling	Enlarge or reduce the printed image. Type a number between 5 and 999 or choose a number from the pop-up menu.
Orientation	Indicate whether the image on the page should be in portrait (normal) or landscape (sideways) orientation.
Watermark	Specify a background image to be printed on every page.

For more information about the layout, borders, scaling, and watermark features, see “Creating Special Effects on the Color StyleWriter 2500,” later in this chapter.

IMPORTANT Make sure you correctly indicate the size of the paper, envelopes, or other material you have in the sheet feeder. If you change the page size in this dialog box, you might also want to look over your document to see if any of the page breaks have changed.

4 Choose Print from the File menu and make adjustments in the dialog box that opens.



Set the options, then click Print.

Item in dialog box	What you use it for
Copies	Type how many copies of the document you want.
Pages	Indicate how many pages of the document to print. To print the whole document, click All. To print a range of pages, type the beginning and end page numbers. As a shortcut, you can indicate the first page by leaving the "From" box blank or the last page by leaving the "To" box blank.
Print Quality	Select which level of quality you want. Generally, the higher the quality, the longer the document will take to print. The Draft option is available only when you use Plain or Coated paper.
Paper Type	Indicate what type of material is loaded in the sheet feeder. For labels and envelopes, choose Plain.
Image	Indicate whether you want the document to print: in color, grays, or black and white.
Notification	Choose how (if at all) to be notified when the document is finished printing. For a visual alert, choose Message from the pop-up menu. For an audio alert, choose a sound.
Color	Open another dialog box, in which you can adjust color options, as explained in "Adjusting Color Options," later in this chapter.
Utilities	Open another dialog box, in which you can set options to clean the print head.

IMPORTANT Make sure the Paper Type pop-up menu accurately indicates what you installed in the sheet feeder.

5 Click the Print button.

If the printer is off, it automatically turns itself on and, after a few moments, the document starts to print. If background printing is turned on, you can continue working while the document is printing. You can also monitor and control the documents that are waiting to print. (See “Printing While You Use Your Computer” and “Monitoring and Controlling Background Printing” later in this chapter.)

Desktop printing

Use one of the two methods described here to print documents without leaving the Finder. Desktop printing is particularly efficient when you have a number of documents you want to print at once or when you have a document that you have already formatted.

- Drag the icons of the documents you want to print to the desktop icon of the printer you want to use.



or

- Select the icons of the documents you want to print then choose the Print command from the File menu. The documents will be printed on the default printer. (See “Switching Between Printers” later in this chapter.)

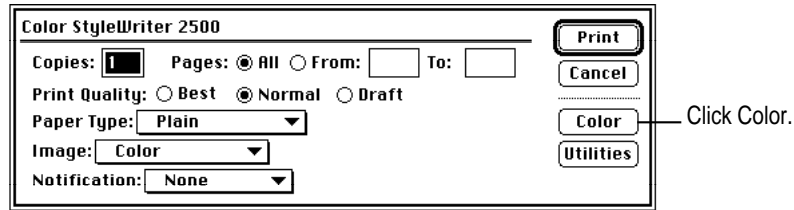
In either case the computer will show you the Print dialog box so you can choose printing options. Make your choices, then click the Print button.

If the printer is off, it automatically turns itself on, and after a few moments, the document starts to print. If background printing is turned on, you can continue working while the document is printing. You can also monitor and control the documents that are waiting to print. (See “Printing While You Use Your Computer” and “Monitoring and Controlling Background Printing” later in this chapter.)

Adjusting color options

To adjust the way colors are printed, follow these steps:

- 1 Choose Print from the File menu.
- 2 In the dialog box that appears, click Color.

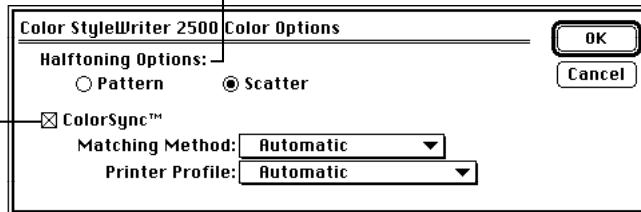


Some programs provide a checkbox you must click in order to print. See the Read Me file for information about printing in color with specific programs.

- 3 Select your color options.

The printer blends the four ink colors in either a repeating pattern of dots or a random scattering of dots. Many people prefer the look of the Scatter option. Choose the halftoning method you prefer.

To turn on color matching, click the ColorSync box so there's an X in it.

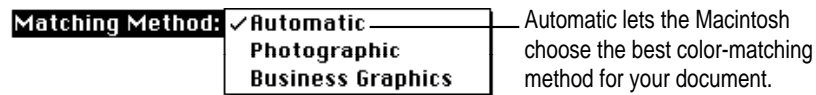


The ColorSync color-matching system makes sure that colors look as consistent as possible no matter what device you use to view them—monitor or printer. In addition, ColorSync helps give you the best possible colors when you export the image to another Macintosh computer with ColorSync installed or print it on another color printer.

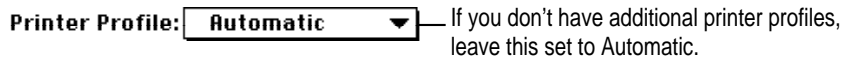
For more information on ColorSync, see Appendix D.

Note: The 13" monitor uses the default system profile. If you are using a different monitor, you should open the ColorSync control panel and select the correct system profile for your monitor or PowerBook display.

With ColorSync turned on and the Automatic matching method selected, the Macintosh chooses the best matching method for the contents of the document you are printing. If you are not satisfied with the results, you can choose the option you want from the Matching Method pop-up menu. Most of the time, however, the Automatic setting is best.



If you have obtained additional printer profiles from other software companies, you can use the Printer Profile pop-up menu to choose the one you want. (The additional profiles should come with instructions telling you how to choose the appropriate one.)



- 4 When you've made your choices, click OK to return to the Print dialog box.
- 5 Click Print.
- 6 To save the ColorSync settings with this document, choose Save from the File menu.

Color printing quirks

Here is some additional information about color printing.

- Different programs may define colors in different ways. When you choose a red in one program, you may not be able to find an exact match in another program. You can adjust the color in the second program until you're satisfied with the printed results. To see how different programs define color, consult the manuals that came with your programs.
- Color printing takes longer than black-and-white printing. The printer must sort through more data and use more ink to complete the job, and this takes time.

Creating special effects on the Color StyleWriter 2500

You can create a number of special effects on the Color StyleWriter 2500 by selecting options in the Page Setup, Print, and Color Options dialog boxes.

Enlarging or reducing the printed image

You can enlarge or reduce the image on the Color StyleWriter 2500, much as you can on many photocopying machines. Reducing the printed image by a small amount is a popular way to fit a little extra onto each page.

- 1 Choose Page Setup from the File menu.**
- 2 Enter a scaling percentage.**

You can type a number from 5 to 999 or use the pop-up menu. Numbers smaller than 100 reduce the image; numbers greater than 100 enlarge it.

Note: Changing the scaling may also change the pagination of your document.

Printing a watermark on each page of your document

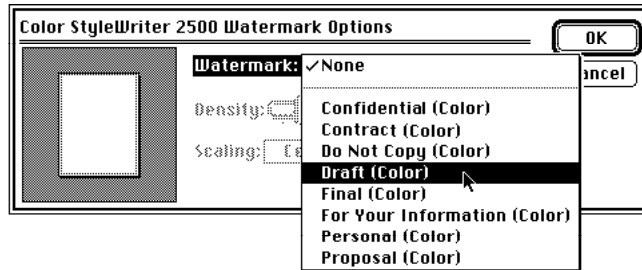
Traditionally a watermark is a translucent image impressed on a piece of paper that you can see only by holding the paper up to the light. The Color StyleWriter 2500 can't do that, but it can put an image on each page of your document, creating the illusion of a watermark. The Color StyleWriter 2500 comes with a number of watermarks already installed, and you can create more, as described in the next section.

To print a document with a watermark in the background, follow these steps:

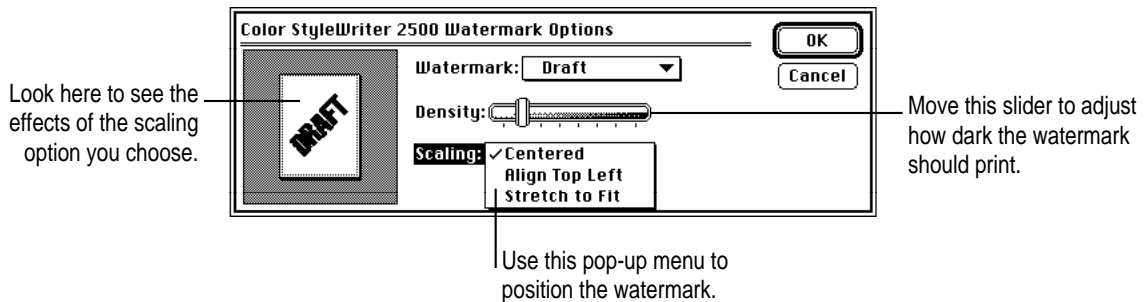
- 1 With your document on the screen, choose Page Setup from the File menu.**
- 2 In the Page Setup dialog box, click the Watermark button.**

Another dialog box opens.

- 3 Choose the watermark you want from the pop-up menu.



- 4 Adjust the Density and Scaling.



When the Density slider is all the way to the right, the watermark will print as dark as it is in the original watermark file.

Note the different effects of the scaling options:

- **Centered** scales the image the same amount in both the horizontal and the vertical directions, then centers it on the page.
 - **Align Top Left** places the image at the upper-left corner of the page without scaling the image at all.
 - **Stretch to Fit** scales the image so it fills the page, even if the horizontal and vertical directions have to be scaled by different amounts. This may distort the image.
- 5 Click OK to return to the Page Setup dialog box.

The settings you choose are remembered by this document but do not affect other documents.

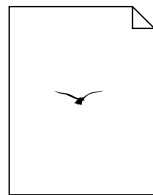
Creating your own watermarks

You can use any program that can save PICT or PICT2 format files to create your own watermarks. For example, you can create a watermark with your company's logo on it.

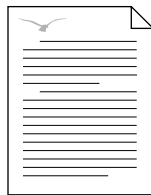
1 Create the file with a drawing program or any program that can save PICT or PICT2 files.

Here are some tips for making effective watermarks:

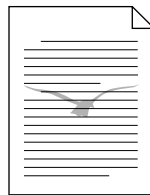
- Make the watermark with saturated colors. When you print a document, you can use the Density control to make the watermark lighter.
- As you draw the image, keep in mind how the watermark scaling options affect the placement of the image when it is printed.



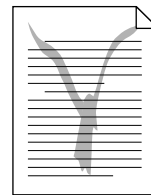
Watermark file



Printed with
Align Top Left
option

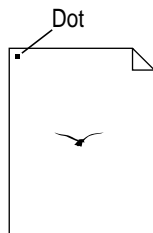


Printed with
Centered option

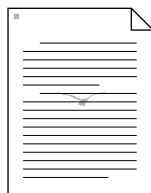


Printed with
Stretch to Fit
option

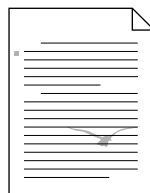
- The printing software determines the placement of the watermark based on where it calculates the upper-left and lower-right corners of the image are. If you want to have more control over the placement, you can use your drawing program to place a dot above and to the left of the image in the watermark file to define a new upper-left corner. If you don't want the dot to be visible in your printed document, make the dot white.



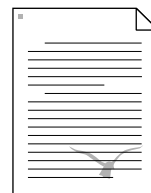
Watermark file



Printed with
Align Top Left
option



Printed with
Centered option



Printed with
Stretch to Fit
option

- 2 Save the PICT file inside the Printing Prefs folder.

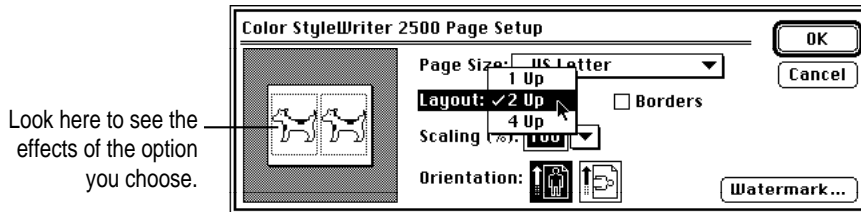
To find the Printing Prefs folder, open the System Folder on your hard disk, then open the Preferences folder. The name you save your file as will be the name that appears in the Watermark dialog box.

Note: If you send the watermark to someone, they also need any fonts that it uses.

Printing 2 or 4 mini pages on each sheet of paper

One of the most popular reasons to print mini pages is to save paper when printing long drafts or to make a compact printout of a reference document, such as an address book.

- 1 With your document on the screen, choose the Page Setup command from the File menu.
- 2 Choose how many pages you want to appear on each sheet of paper from the Layout pop-up menu.



- 3 If you'd like a border around each mini page, click to put an X in the Borders checkbox.

Selecting a halftoning method

Halftoning is a process in which colors are blended by using an arrangement of different-colored dots. The Color StyleWriter 2500 blends colors by using either a repeating pattern or a random scattering of dots. The random method generally produces a smoother appearance, though it takes longer to print. The default choice is random scattering.

To change the halftoning method, follow these steps:

- 1 When you are ready to print, choose Print from the File menu.**
The Print dialog box opens.
- 2 Click the Color button to open another dialog box.**
- 3 Click Pattern or Scatter.**
- 4 To return to the Print dialog box, click OK.**

Switching between printers

If you have more than one printer available, you must select which printer you want to use. The printer you select is called the default printer.



A bold outline around a desktop printer icon indicates that it is the default printer, where all your documents will print until you indicate otherwise.



A plain outline around a desktop printer icon indicates that it is not the default printer.

To change the default printer, use one of these three methods, as described in the next sections.

- Drag the document you want to print to a desktop printer icon.
- Select the printer by using its desktop printer icon.
- Select the printer by using the Chooser.

Note: Switching between printers may change how much information you can fit on a page. It's best to choose a printer before you spend much time paginating the document.

Drag the document you want to print to a desktop printer icon

You can switch to a new default printer by dragging the icon of any document you want to print to the icon of the printer you want to use. (See “Desktop Printing” in the section “Printing a Document” earlier in this chapter.)

Select the printer by using its desktop printer icon

If you already have a desktop printer icon for the printer you want to use, follow these steps to select a new default printer without immediately printing anything on it:

- 1 **Click the icon of the desktop printer you want to use.**

A Printing menu appears on the menu bar at the top of the screen.

- 2 **Choose the Set Default Printer command from the Printing menu.**

Until you choose another printer, the Print command will send your documents to this printer.

Select the printer by using the Chooser

If you don't have a desktop printer icon for the printer you want to use, you must select the printer by using the Chooser. The Chooser will then create a desktop icon for the printer that you select and make it the default printer.

- 1 **Select the Chooser from the Apple () menu.**
- 2 **Select the printer that you want by clicking its icon.**
- 3 **Close the Chooser by clicking the close box in its upper-left corner.**

When you close the Chooser, it creates a desktop printer icon for the printer you selected.

Creating, throwing away, and manipulating desktop printer icons

To create a desktop printer, select the printer in the Chooser. After you close the Chooser, the icon will appear on your desktop. See “Select the Printer by Using the Chooser,” in the section “Switching Between Printers,” earlier in this chapter.

You can also do the following with desktop printer icons:

- **Throw away the icon.** Drag the icon to the Trash. You can't throw away a desktop printer icon while the printer is printing a document. (You can create another desktop printer icon for that printer whenever you like.)
Note: You must always have at least one printer icon on your desktop. If you throw away the last icon, it will immediately be created again.
- **Rename the icon.** Rename the icon as you would any other Finder icon. Click the name to highlight it, then type the new name. This changes the name of the icon, not the name of the printer.
- **Move the icon.** You can drag the icon anywhere you like on the desktop. However, you cannot move it off the desktop.
- **Create an alias for the icon.** You can create an alias for a desktop printer as you would for any Finder icon by selecting the icon and choosing the Make Alias command from the File menu. You can move the alias anywhere on or off the desktop.

Determining the status of a printer by looking at its icon

You can tell the status of a printer by looking at its desktop icon:



Plain icon indicates a printer that is not currently chosen for printing.



Stopped icon indicates you have stopped the print queue.



Default icon indicates the printer you have currently chosen to print on.



Error icon indicates there is an error on this printer. Double-click the icon to see a message.



Printing icon indicates a document is printing on this printer.



Disabled icon indicates this desktop printer is not available. See Chapter 5.

Printing while you use your computer

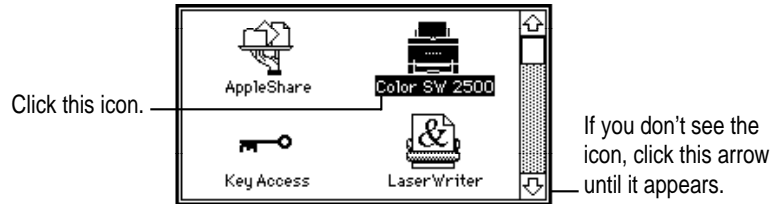
You can continue to work on your computer while printing on the Color StyleWriter 2500. The feature that gives you this ability is called *background printing* and is automatically turned on when you install the Color StyleWriter 2500 software. (If you use QuickDraw GX, background printing is always turned on.)

To turn background printing on or off, follow these steps:

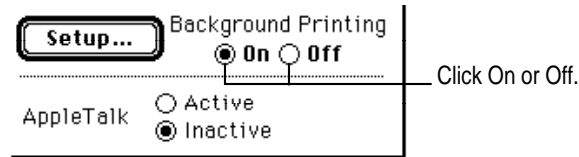
- 1 **Select Chooser from the Apple (🍏) menu.**

The Chooser opens.

- 2 **Click the Color SW 2400 icon in the Chooser.**



- 3 **Click to turn background printing on or off.**



- 4 **Click the close box in the upper-left corner of the Chooser.**

Once background printing is turned on, it is in effect whenever you print, until you turn it off. When you click Print in the Print dialog box, a message appears for a moment to tell you the document is being prepared. Once the message disappears, you can continue other work. Your computer may pause occasionally while it processes the document for printing. See “Monitoring and Controlling Background Printing,” next, for more information.

Monitoring and controlling background printing

If you are using background printing, you can use the desktop printer features to monitor and control your print requests. To learn how to turn background printing on and off, see “Printing While You Use Your Computer,” earlier in this chapter.

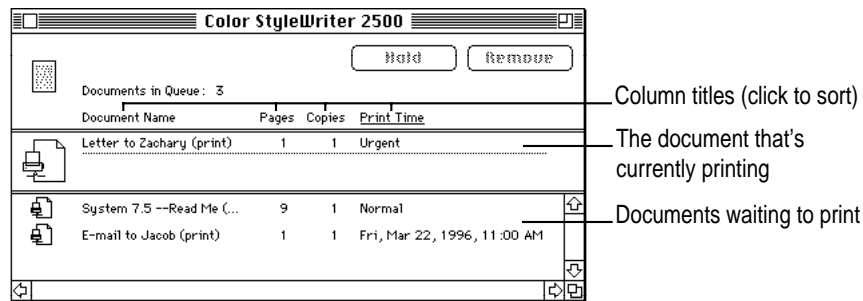
To monitor or control a print request, follow these steps:

- 1 Double-click the desktop printer icon you’re interested in.



Color StyleWriter 2500

A window opens listing the documents that are printing or waiting to print:



About print requests to shared printers: If you use ColorShare to print a document on a printer that is *not* directly connected to your computer, your print request will be visible in this window for only a few moments. Then the print request moves to the desktop printer on the computer that is directly connected to the printer.

- 2 Decide what you’d like to do.
 - To delete a print request, select its title or icon (by clicking it), then click the Remove button. (You can select more than one item at a time by holding down the Shift key while clicking.) You can also drag the icon for the print request to the Trash. Note that these methods delete only the print request, not the document itself.

- **To put a print request on hold**, select its title or icon (by clicking it), then click the Hold button. The print request will stay on hold until you select its title again and click the Resume button. You can also put the print request that's currently printing on hold by dragging it to the list of documents waiting to print.
- **To indicate that a print request is urgent**, select its title or icon (by clicking it), then choose Set Print Time from the Printing menu. In the dialog box that opens, click Urgent. This moves the print request to the top of your list.
- **To indicate that a print request should not print until a future time**, select its title or icon (by clicking it), then choose Set Print Time from the Printing menu. In the dialog box that opens, click At Time, then set the time you want.
- **To sort the list of items waiting to print**, click the title of the column you want to sort by. For example, to sort by the name of the document, click Document Name. (You can also sort by choosing the commands in the View menu.) The column title you sorted by is underlined. Sorting the items does not change the order in which they will print. To see and change that order, sort by Print Time.
- **To change the order of the items waiting to print**, click the words Print Time, and then change the items' place in the list by dragging their titles.
- **To temporarily stop all your items from printing on this printer**, choose Stop Print Queue from the Printing menu. To resume using the printer, choose Start Print Queue from the Printing menu. If you're using a PowerBook, this can be a good way to save print requests while you're on the road until you get back to your printer.

Shortcut: The commands to start and stop the print queue are available without opening the window for the printer, if the printer's icon is selected on the desktop.

- **To move a print request from one printer to another printer** of the same type, drag the icon for the print request to the icon of the printer where you want to move it. If you're not sure whether the two printers are of the same type, try moving the print request anyway—the printer software won't let you move a print request to an incompatible printer.

Sharing your printer with other users

If your computer is connected to other computers over an AppleTalk network, you can allow others on the network to print on your Color StyleWriter 2500. The technology that lets you do this is called ColorShare.

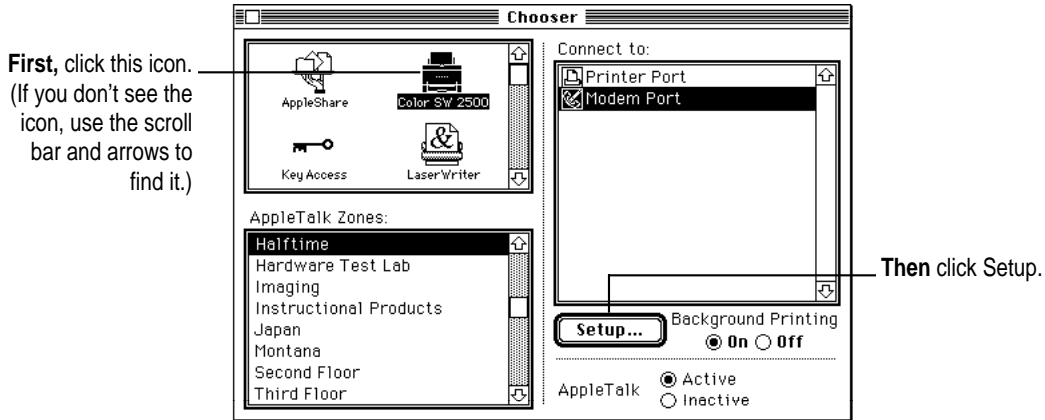
Note: Before you can share the printer, other users must install the Color StyleWriter 2500 printer software. In addition, everyone who shares the printer must first open the Chooser and select the Color SW 2500 icon.

Note the following points about ColorShare:

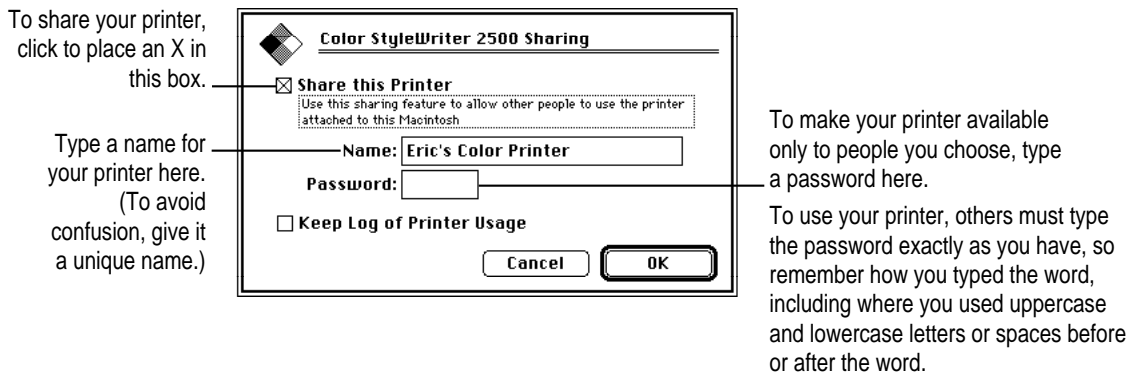
- Even though you are sharing the printer over a network, the printer must still be connected directly to a single computer with the provided cable, as described in “Connecting the Printer to Your Macintosh” in Chapter 1.
- For others to be able to use the shared Color StyleWriter 2500 printer, your Macintosh must be turned on.
- When other users print on a printer connected to your Macintosh, you may notice that your computer pauses occasionally while you work. Because the printer is attached to your Macintosh, you can see what’s being printed by opening the desktop printer icons, as described in “Monitoring and Controlling Background Printing,” earlier in this chapter.
- These instructions work only if you do not use QuickDraw GX software, and only others who do not have QuickDraw GX can share the printer. (QuickDraw GX users can share a printer only with other QuickDraw GX users. They share the printer by clicking its icon, and then choosing Sharing from the File menu.)

To share the printer with other non-QuickDraw GX users, follow these steps:

- 1 Select Chooser from the Apple () menu.
- 2 In the Chooser dialog box, do the following:



- 3 In the Setup dialog box, make the changes you want.



The name you give the printer is the name others will use to select the printer in the Chooser.

- 4 To keep a record of what's printed on your printer, click the "Keep Log of Printer Usage" checkbox to put an X in it.**

You can open and print the log with SimpleText, TeachText, or another word-processing program. To find the log file, open your System Folder; then open the Preferences folder and the Printing Prefs folder. The file is called Color StyleWriter 2500 Log.

Note: You can keep a log even if your printer is not shared.

- 5 Click OK to close the Setup dialog box.**

Sharing works only if background printing is turned on. If it is not turned on, ColorShare turns it on.

- 6 Close the Chooser by clicking the close box in its upper-left corner.**

If the Color StyleWriter 2500 software has been installed on their Macintosh computers, other users connected to the network can now use your Color StyleWriter 2500, as described in the next section.



Printing on a shared Color StyleWriter 2500

After you turn on ColorShare (as described in the previous section), others on your network can share your printer.

IMPORTANT People on the network who want to print on your shared printer must install the Color StyleWriter 2500 software on their computers as described in Chapter 1. After the new software is installed, network users must follow these steps:

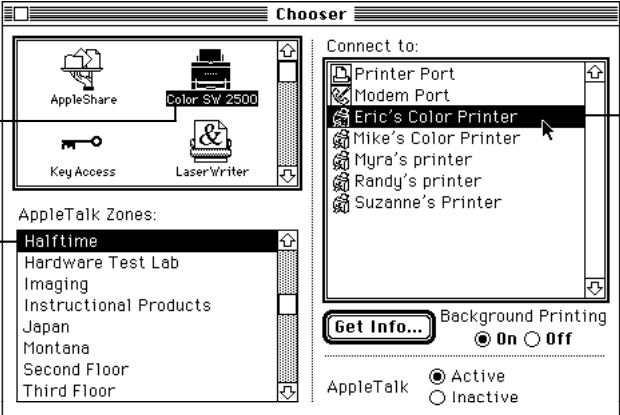
- 1 **Select Chooser from the Apple () menu.**

The Chooser opens.

- 2 **Make the following selections in the Chooser:**

First, click this icon. (If necessary, use the scroll bar and arrows to find the icon.)

Second, if the network has zones, click the one containing the printer you want to use.



The screenshot shows the 'Chooser' window with the following elements:

- Top Panel:** Contains icons for AppleShare, Color SW 2500, Key Access, and LaserWriter.
- AppleTalk Zones:** A list with 'Halftime' selected. Other zones include Hardware Test Lab, Imaging, Instructional Products, Japan, Montana, Second Floor, and Third Floor.
- Connect to:** A list of printer names: Printer Port, Modem Port, Eric's Color Printer (highlighted), Mike's Color Printer, Myra's printer, Randy's printer, and Suzanne's Printer.
- Buttons:** 'Get Info...' and 'Background Printing' (with 'On' selected).
- AppleTalk:** 'Active' selected.

Third, click the name of the printer you want to use. If the printer requires a password, a dialog box appears asking you to type it.

- 3 **Close the Chooser by clicking the close box in its upper-left corner.**

After you close the Chooser, a desktop printer icon for the Color StyleWriter 2500 appears.

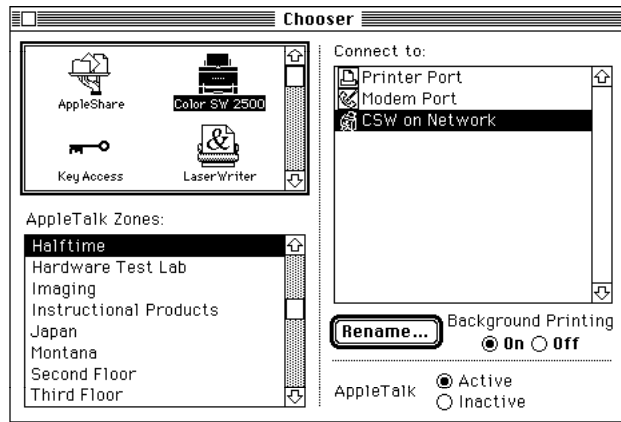
Anyone who completes these steps can print on the shared printer.

When you print a document to a shared StyleWriter, your computer transfers the request to the computer directly connected to the printer. As soon as the transfer is complete, your computer thinks the document has finished printing. You can continue monitoring the print request on the computer that is directly connected to the printer.

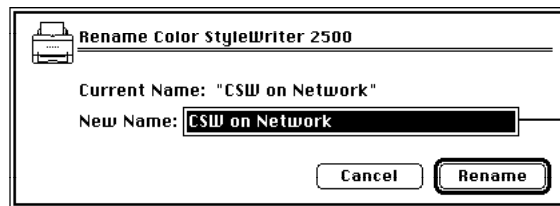
Connecting a Color StyleWriter 2500 to a LocalTalk or EtherTalk network

If you have the optional Color StyleWriter LocalTalk Module or EtherTalk Adapter, you can connect a Color StyleWriter 2500 printer directly to a LocalTalk or EtherTalk network. (Make sure you use the model that works with the Color StyleWriter 2500.)

To attach the LocalTalk Module or EtherTalk Adapter and connect your Color StyleWriter 2500 to the network, follow the instructions that come with the module. Once the printer is on the network, its name appears in the Chooser just like the names of other network printers.



If you want to change the name, click Rename. In the dialog box that appears, type a new name for the Color StyleWriter 2500 printer. (*Note:* Anyone on the network can change the name.)



Type a new name, then click Rename (or press Return).

3

Tips on Paper, Quality, Speed, and Cost



This chapter explains how to use different materials and printing options to meet your needs.

Choosing print materials

Here are some tips on when and how to use different print materials.

Plain paper

Use plain paper for everyday printing.

- Print quality may vary depending on the manufacturer of the paper. If you're not happy with one kind of paper, try a different brand. For consistent results, use one of the special papers designed for the Color StyleWriter 2500 printer.
- You can use any plain paper, including plain copier paper. Paper weight can range from 16 to 24 pounds, though 20-pound paper is recommended.
- Don't use erasable typing paper, damaged or wrinkled paper, stapled paper, or multipart forms ("carbonless carbons").
- Plain paper almost always has one side that is better for printing than the other. See the package label to determine which side is better, and load that side so that it faces you.

Premium coated paper

Use premium coated paper for exceptional print quality—for example, for a final draft, a colorful notice, or the master copy of a presentation. Colors appear richer and more vibrant on such paper.

- Use only coated paper designed for use with the Color StyleWriter 2500.
- One side of the paper is a little whiter than the other and is better for printing. See the package label on the coated paper to determine which side is better, and load that side so that it faces you.

Premium Plus Coated Paper

Use Premium Plus Coated Paper for exceptional image quality—for example, when printing a photographic picture. Images look smoother on such paper.

- Use only Apple's Premium Plus Coated Paper designed for use with the Color StyleWriter 2500 printer mechanism and the printer's inks.
- One side of the paper is a little whiter than the other and is better for printing. See the package label on the coated paper to determine which side is better, and load that side so that it faces you.

Glossy paper

Use glossy paper for the highest print quality you can get on opaque paper—for example, for color proofs.

- Use only glossy paper designed for use with the Color StyleWriter 2500.
- When loading a stack of glossy paper into the sheet feeder, put a single sheet of plain paper at the back of the stack to prevent misfeeding.

Back-print film

Use back-print film for the highest print quality of all—for example, for digitized photographs or important client presentations. Back-print film has a shiny surface and works exceptionally well when displayed by backlighting.

- Use only back-print film designed for use with the Color StyleWriter 2500.
- Load back-print film so that the chalky side faces you.
- When loading a stack of back-print film into the sheet feeder, put a single sheet of plain paper at the back of the stack to prevent misfeeding.
- In the Print dialog box, be sure to select Back Print as the paper type.
- The printer automatically reverses the image and prints it on the film's chalky side so that the image looks correct when viewed from the shiny side.

Transparencies

Use transparencies when you want to present your document on an overhead projector.

- Use only transparencies designed for use with the Color StyleWriter 2500. These special transparencies have a sheet of paper attached to them; leave the paper attached until after printing.
- Load the transparencies so that the shiny side faces you and the edge where the paper and the transparencies are attached points downward.

Quality

For highest-quality printing, choose Best quality and print on coated or glossy paper, back-print film, or transparencies.

Select Best quality. Best quality takes longer to print, but you get better quality—even on plain paper.

Color StyleWriter 2500

Copies: 1 Pages: All From: To:

Print Quality: Best Normal Draft

Paper Type: Glossy

Image: Color

Notification: None

Print Cancel Color Utilities

Also use the following selections in the Color Options dialog box. (To display the dialog box, click the Color button in the Print dialog box.)

To turn on color matching and get the best-quality color printing, click to put an X in the ColorSync check box.

Color StyleWriter 2500 Color Options

Halftoning Options:

Pattern Scatter

ColorSync™

Matching Method: Automatic

Printer Profile: Automatic

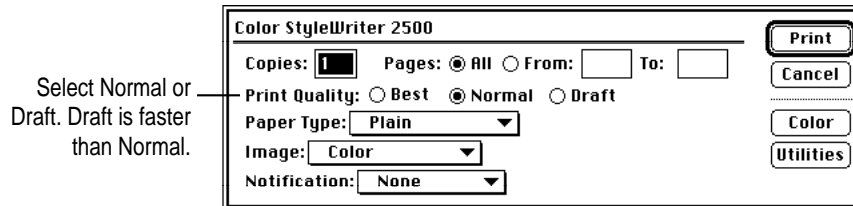
OK Cancel

Many people prefer the look of the Scatter halftoning method.

For more information on color matching, see “Adjusting Color Options” in Chapter 2.

Speed

For faster printing, change the Print Quality setting in the Print dialog box. (To display the dialog box, choose Print from the File menu.)



Color printing takes longer than black-only printing.

The optional high-performance black ink cartridge is designed for efficient, high-speed, black and grayscale printing.

Cost

To reduce the amount of ink you use, select Draft quality in the Print dialog box whenever possible.

Leave the printer's cover shut. (Every time you open and shut the cover, the printer uses ink as it cleans the print head.)

Don't unplug the printer unnecessarily or connect it to a power strip that you turn off occasionally. When reconnect the power, it uses ink as it cleans the print head.

Switching cartridges between the color cartridge and an optional high-performance black cartridge uses extra ink. Don't switch cartridges unnecessarily. If you plan to print many pages in black or grayscale (for a cumulative total of 20 or more pages), use the optional high-performance black cartridge.

4

Maintaining Your Printer



It doesn't take much effort to keep your Color StyleWriter 2500 printer in good working condition. You simply have to replace the ink tanks when they run out of ink and clean the printer or print head if you notice a problem. (And occasionally, you should replace a worn-out ink cartridge.)

For other service, see the information about service and support that comes with your Color StyleWriter 2500.

IMPORTANT Follow all the safety instructions given at the beginning of Chapter 1.

Replacing ink tanks in the four-color ink cartridge

The four-color ink cartridge contains two separate ink tanks, one for black ink and one for cyan, magenta, and yellow inks. This means that when you run out of black ink, you don't have to replace both tanks. (Most people use more black ink than any other color.)

WARNING Use only ink designed for use with the Color StyleWriter 2500 and 2400. The wrong ink can damage the print head and the printer, and such damage is not covered under the warranty.

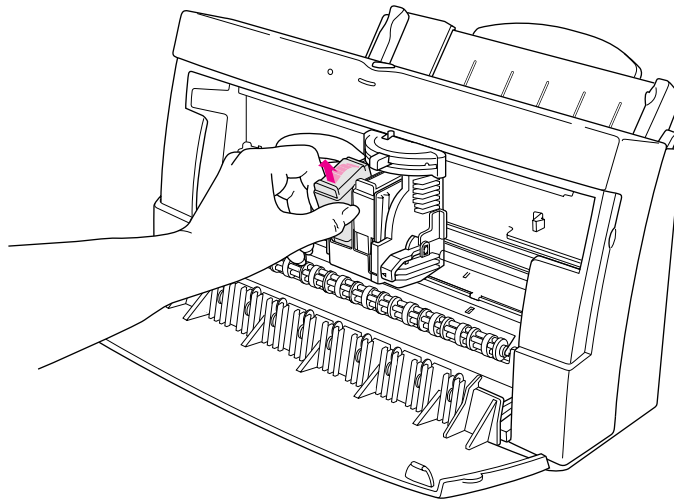
When to change ink tanks

Look carefully at your printed documents to see if a color is missing or faded. Sometimes it's obvious—such as when you run out of black ink. At other times you may notice that the colors seem wrong—such as when you're printing a nature scene and you run out of yellow.

The best way to verify that ink is running low is to print the test page. (For details, see “Checking the Print Nozzles” in Chapter 1.)

How to change ink tanks

- 1 Turn on the printer.
- 2 Open the printer's front cover.
Wait while the carrier moves to the center position.
- 3 Remove and discard the old ink tank.

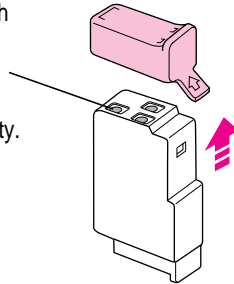


IMPORTANT You can use the same ink tanks and ink cartridges in both the Color StyleWriter 2500 and Color StyleWriter 2400.

4 Remove the new ink tank from its packaging.

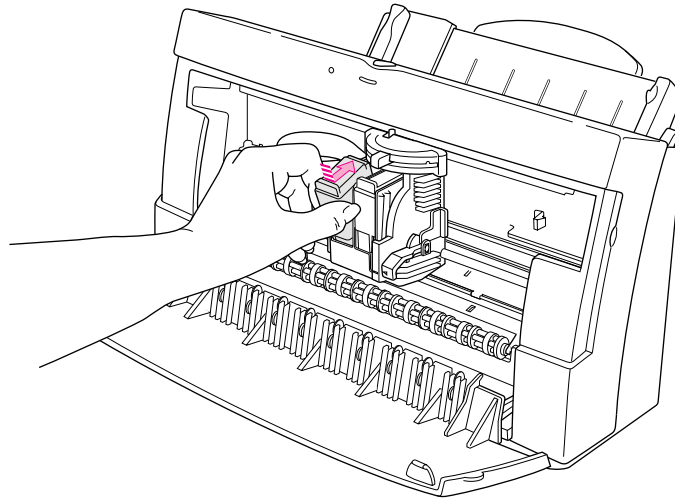
5 Remove the plastic cap from the bottom of the ink tank.

Don't let anything touch the openings. The ink may cause stains, and any contaminants may diminish the print quality.



6 Slide the tank into the cartridge, and push it down so it snaps into place.

IMPORTANT Make sure you put the color ink tank on the left and the black ink tank on the right.



7 Close the printer cover.

Replacing the ink cartridge

The ink cartridge contains the print head, the device that takes the ink and sprays it on the paper. The Color StyleWriter 2500 printer comes with a four-color cartridge with replaceable ink tanks. You can also purchase an optional high-performance, black-only cartridge. The black-only cartridge has enough ink to print about 900 pages at 5% coverage—when ink covers 5% of the page. (A typical double-spaced page has about 5% coverage.) The four-color cartridge lasts about twice as long, because you can replace its ink tanks.

When to replace the four-color cartridge

Age is the primary factor in determining when a four-color cartridge wears out. If you've done a lot of printing with your cartridge and notice a gradual deterioration in print quality, it may be time to install a new four-color ink cartridge. Before you do, try printing the test page in case a clogged nozzle is the problem. (See “Checking the Print Nozzles” in Chapter 1.)

Note: A new four-color ink cartridge comes with fresh ink tanks already installed.

When to replace the optional black-only ink cartridge

Knowing when to replace the black-only cartridge is fairly simple. When it runs out of ink, it stops printing.

Note: If you see other problems with black-only print quality, such as unwanted white lines in a document, try printing the test page. (See “Checking the Print Nozzles” in Chapter 1.)

How to find ink cartridges

You should be able to find cartridges, ink tanks, and other supplies for your Color StyleWriter 2500 printer at any Apple-authorized dealer.

How to replace the ink cartridge

IMPORTANT Before replacing the cartridge, try printing the test page. (See “Checking the Print Nozzles” in Chapter 1.)

1 Turn on the printer.

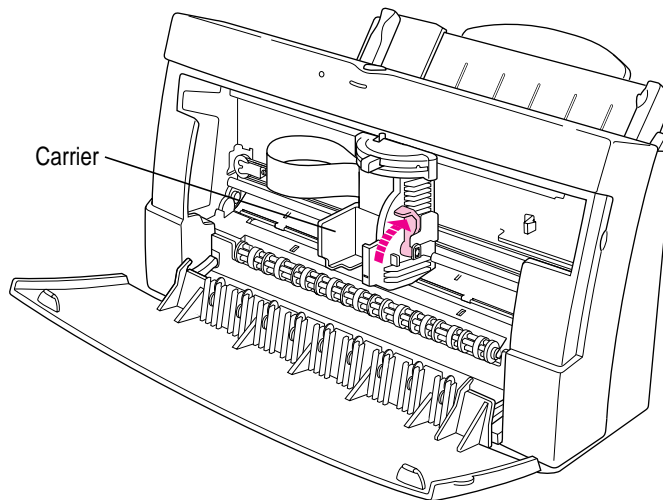
2 Open the printer’s cover.

Wait while the carrier moves to the center position.

3 Raise the bright blue lever on the carrier and remove the cartridge.

Dispose of the cartridge.

IMPORTANT Be careful not to touch the print head, or you may temporarily stain your fingers with ink.

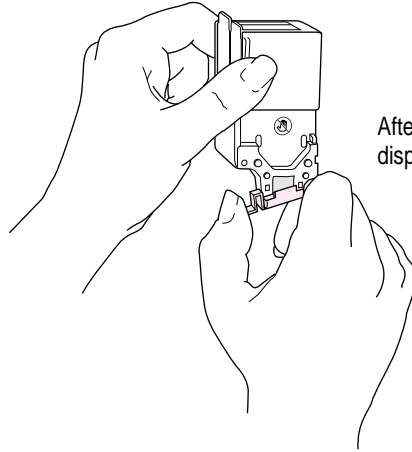


4 Remove the cover from the plastic tub that contains the new cartridge.

5 Grasp the ink cartridge by its sides and remove it from the plastic tub.

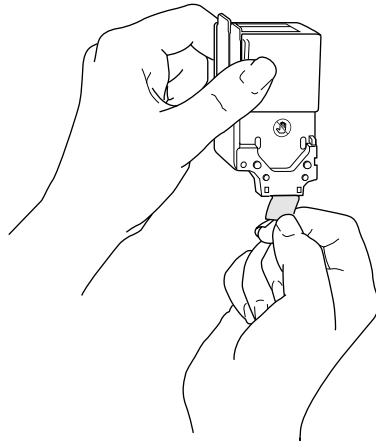
You may safely touch the black plastic, but be careful not to touch any other part.

6 Remove the bright orange cap from the cartridge's print head.

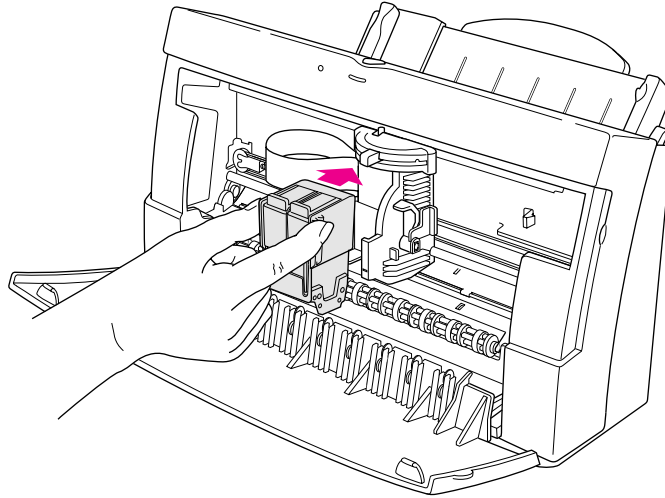


After you snap it off, dispose of the cap.

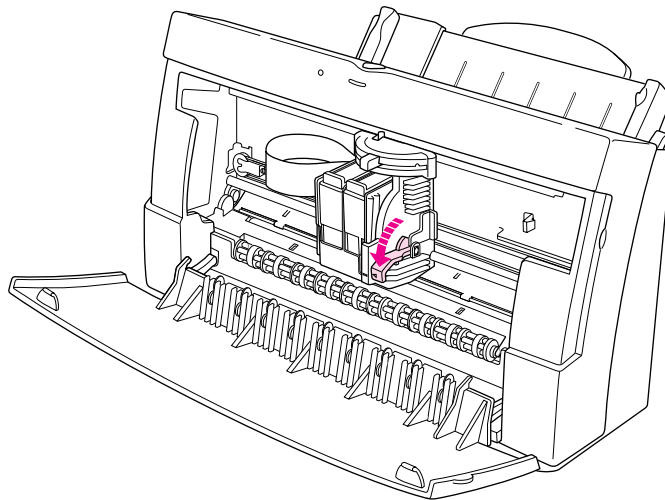
7 Peel the orange tape off the print head.



- 8** Slide the cartridge into its place in the printer.



- 9** Lower the bright blue lever on the carrier to secure the cartridge in place.

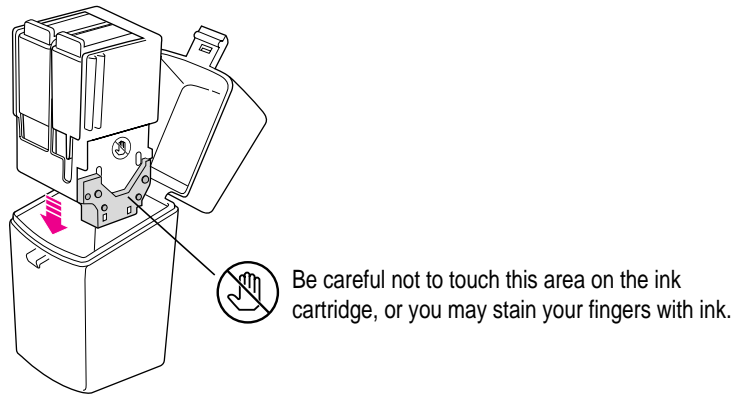


- 10** Close the printer cover.

Now you can open any document you want and print it as usual.

Storing the ink cartridge you aren't using

The Color StyleWriter 2500 comes with a four-color cartridge. In addition, you can purchase the optional high-performance black cartridge. While they are sealed in their original packaging, the ink cartridges are protected. If you open both packages and switch ink cartridges for printing different documents, be sure to store the one you're not using in the storage case supplied with your Color StyleWriter 2500. The storage case keeps the print head from drying out and prevents accidents with ink stains.



Once you've removed both cartridges from their original packages, always keep one inside the printer and the other in the storage case.

IMPORTANT If you have only one ink cartridge, leave it inside the printer.

Cleaning the outside of the printer

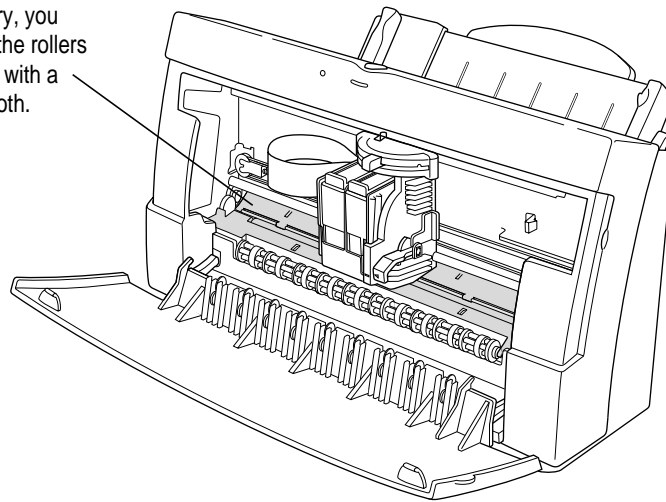
Before you clean the printer, turn it off and unplug the power cord. Then wipe the outside of the printer with a clean, soft cloth dampened with water. If necessary, you can use a mild soap or detergent. Be careful not to get any liquid in the power cord receptacle.

WARNING Don't use ammonia-based or alcohol-based cleaners on or around the printer—they may react with the plastic.

Cleaning the inside of the printer

Occasionally you may need to wipe off paper dust or drops of ink inside the printer. Turn the printer off and unplug it. Then open the printer and carefully clean the rollers and platen with a soft, dry cloth.

If necessary, you can clean the rollers and platen with a soft, dry cloth.



WARNING Don't use any liquid cleaners inside the printer.

5

Troubleshooting



This chapter provides solutions to some problems that you may encounter while using your Color StyleWriter 2500 printer.

As long as you follow the maintenance instructions in Chapter 4, you're not likely to have any problems with your printer. The most common source of trouble is faulty software installation. To avoid these problems, follow the software installation instructions in Chapter 1.

WARNING If you have a problem with your Color StyleWriter 2500 printer and nothing presented in this chapter solves it, consult the service and support information that came with the printer for instructions on how to contact an Apple-authorized service provider or Apple for assistance. If you attempt to repair the Color StyleWriter 2500 yourself, any damage you may cause to the printer will not be covered by the limited warranty on your printer. Contact an Apple-authorized dealer or service provider for additional information about this or any other warranty question.

Safety precautions

To prevent damage to the Color StyleWriter 2500 printer and harm to yourself and other users, follow these safety tips.

- Don't touch anything inside the printer except as described in the instructions in this manual. Otherwise, you may damage delicate mechanical parts.
- Don't shake ink tanks or hold them with the ink opening pointing down. Ink can leak out and cause stains.
- Don't touch the ink opening on an ink tank.
- Don't oil the inside of the printer.
- Don't attempt to disassemble the printer.
- Before you unplug the printer, make sure it is turned off. (The green power light should be off.) Turning the power off ensures that the carrier has returned securely to its home position and the cartridge has been capped.

The Chooser doesn't show the Color SW 2500 icon

If you open the Chooser and don't see the Color SW 2500 icon, you probably need to install the appropriate printer software. For instructions, see "Installing Your Printer Software" in Chapter 1.

Installation is unsuccessful

If a message tells you that installation was not successful—or if you have to repeatedly swap between the same two disks—check to make sure you restarted your computer with all your software extensions off as explained in Chapter 1. If that doesn't work, try removing corrupted fonts or performing a custom installation, as described in the next two sections.

Removing items from your Fonts folder to solve installation problems

Items in your current Fonts folder can interfere with successful installation of the printer software. To correct the problem, follow these steps:

- 1** Quit all programs you are currently running.
- 2** Open the Fonts folder (inside the System Folder) on your Macintosh.
- 3** Drag the following files out of the Fonts folder. (Look for files with exactly these names.)
 - Avant Garde
 - Bookman
 - Delphian
 - Garamond Narrow
 - Helvetica Black and Helvetica Compressed
 - Lubalin Graph
 - Lucida Bright
 - Machine
 - N Helvetica Narrow
 - Nadianne
 - New Century Schlbk
 - Old English Text
 - Onyx
 - Oxford
 - Swing
 - Zapf Chancery
 - Zapf Dingbats
 - Zeal

You can put the fonts temporarily into a new folder and drag the folder to your desktop. Then, after you install the Color StyleWriter 2500 software (including these fonts), you can drag the temporary folder to the Trash.

- 4** Repeat the software installation procedure in Chapter 1.

For more details about fonts, see Appendix B.

Using the Custom Installer to solve installation problems

For another way to work around problems with corrupted fonts, you can install the printer software without installing the fonts that come with the printer. (The disadvantage is that you won't be able to use these fonts if you don't already have them.)

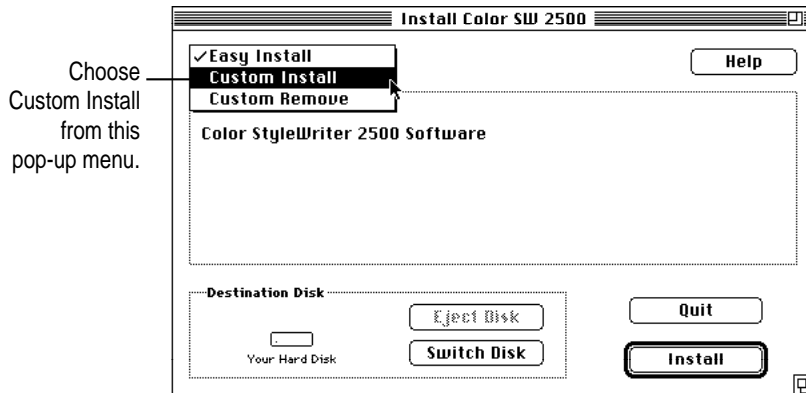
- 1 Insert *Color StyleWriter 2500 Disk 1* into a floppy disk drive.

If necessary, open the disk icon.

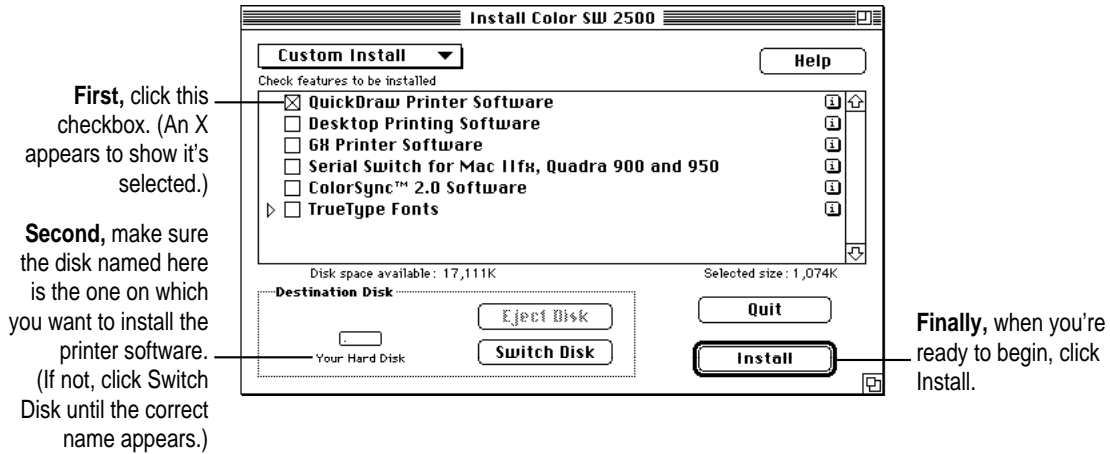
- 2 To start the Installer program, double-click its icon.

- 3 In the Welcome dialog box that appears, click Continue.

- 4 In the Installer dialog box, choose Custom Install.



5 In the Custom Install dialog box, click the QuickDraw Printer Software checkbox.



6 When you see a message on your screen, follow the directions and insert the next disk.

The Installer ejects disks and asks you to insert others. Keep following the instructions on the screen until the installation is complete.

7 When you see a message reporting that installation was successful, click Restart.

The Installer restarts your Macintosh.

The computer crashes while attempting to print

When a computer suddenly stops working—either a message on the screen tells you a system error has occurred, or the mouse and keyboard act as if they're disconnected—the computer has crashed.

If your computer often crashes after you tell it to print a document, your printing software may have become corrupted. Reinstall the printer software by following the instructions in “Installing Your Printer Software” and “Telling Your Computer to Use the Color StyleWriter 2500” in Chapter 1.

The computer doesn't recognize the Color StyleWriter 2500

If you have selected the Color StyleWriter 2500 in the Chooser but nothing prints, or you get a message that no Color StyleWriter 2500 is connected, one of the conditions in the list that follows may be the cause.

Note: Before you try to solve the problem, open the Color StyleWriter 2500 desktop printer icon to see if there are any error messages and to check how many print requests are waiting. If you repeatedly tried to print a document, there may be multiple copies waiting to print. You can delete anything you don't want by selecting its title, and then clicking the Remove button. See “Monitoring and Controlling Background Printing” in Chapter 2.

- A plug may be loose. To make sure that all cables are securely connected, turn off the computer and the printer, then unplug each end of each cable you want to test and plug it back in. For connection instructions, see Chapter 1.
- You may have indicated the wrong port in the Chooser. Open the Chooser and change the port selection. (Look at the back of the computer to see whether you plugged the printer into the computer's printer port [🖨️] or modem port [📡].)
- If you are trying to use a shared printer connected to another computer and the printer name isn't listed in the Chooser, make sure that the other Macintosh is turned on and connected to the network. Also make sure that the printer is set up to be shared. Then try again to select the printer in the Chooser. (*Note:* QuickDraw GX users can share a printer only with other QuickDraw GX users and non-QuickDraw GX users can share only with other non-QuickDraw GX users.) See the instructions in “Sharing Your Printer With Other Users” in Chapter 2.
- You may be using the wrong printer software. Make sure you installed the software as described in Chapter 1 and that you have selected the printer as described in “Telling Your Computer to Use the Color StyleWriter 2500,” also in Chapter 1.
- If you're using a PowerBook computer with an internal modem, change the serial port setting to Normal or External. For details, see “Special Information for PowerBook Owners” in the section “Telling Your Computer to Use the Color StyleWriter 2500” in Chapter 1.

- If your computer is not connected to a network, turn off AppleTalk in the Chooser.
- The printer may need to be reset. Turn the printer off, count to five, then turn it back on.

If you still can't resolve the problem, the printer may not be working properly. See the information about service and support that came with your printer.

Desktop printer icon problems

A desktop printer icon appears again as soon as I drag it to the Trash.

You must always have at least one desktop printer icon. If you drag your last desktop printer icon to the Trash, the computer instantly creates another one just like it.

If you don't want to use desktop printers at all and you have System 7.5 or later, you can use the Extensions Manager control panel to turn off Desktop PrintMonitor, Desktop Printer Extension, and Desktop Printer Spooler. Or you can use the Installer's Custom Remove feature to remove the desktop printing software, as described in Appendix F.

An X appears over the desktop printer icon.

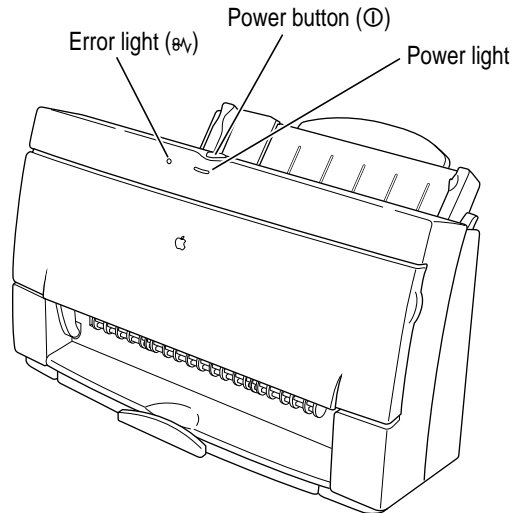
When a desktop printer is not working, its icon appears with an X over it.

- You may have started the computer with a different startup disk or temporarily turned off all the software extensions. When you restart the computer as usual, the icon will return to normal.
- You may have removed the desktop printing software that created the printer icon. If you meant to do so, you can drag the icon to the Trash. If not, you can reinstall the software as explained in Chapter 1.

A PowerBook has trouble printing to the Color StyleWriter 2500

Some PowerBook computers have special requirements for printing. See "Special Information for PowerBook Owners" in the section "Telling Your Computer to Use the Color StyleWriter 2500" in Chapter 1.

The lights indicate a problem



Sometimes the lights on the printer signal a problem.

- **Both lights are off.** To conserve energy, the printer turns itself off if it's left idle for some time (usually about 5 minutes). If you suspect a problem, press the power button. If the lights remain off, check to make sure the power cord is plugged in properly and the outlet has power. If you can't turn the printer lights on, see the information about service and support that comes with the printer.
- **The error light glows steadily.** Either the printer is out of paper or the paper has misfed. Check your computer screen for messages. See Chapter 2 for instructions on loading the sheet feeder, or “Paper Is Jammed” and “Paper or Envelopes Feed Improperly” later in this chapter.
- **The error light blinks.** The ink cartridge may not be seated properly. Open the printer's cover. Make sure the cartridge is inserted properly, and that the bright blue lever is firmly lowered to secure the cartridge in place. For instructions, see “Installing the Ink Cartridge” in Chapter 1.

The printer seems slow

See the suggestions under “Speed” in Chapter 3.

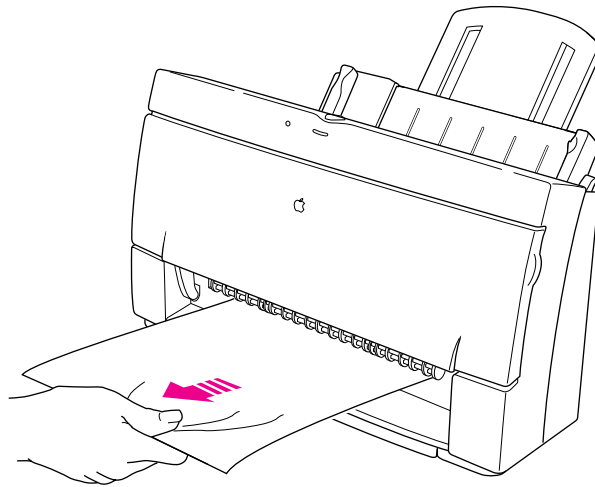
If you have a Macintosh IIfx, Macintosh Quadra 900, or Quadra 950 computer, check the Serial Switch control panel. Make sure it is set to Compatible.

Note: The printer automatically takes a few moments to clean the print head when it is plugged back in or after more than three days of inactivity.

Paper is jammed

Occasionally a piece of paper may get stuck inside the printer during the printing process. To clear a paper jam, follow these steps:

- 1 If necessary, open the printer to see where the jam is.
- 2 Gently pull the paper free.



More than one piece of paper passes through the printer at a time

Follow these steps:

- 1 Remove all the paper from the sheet feeder.
- 2 Turn off the printer.
- 3 Turn the printer back on.
- 4 Put the paper back in.

Paper or envelopes feed improperly

If paper tears, gets skewed, or comes through the printer crumpled, it may not be entering the printer properly. Try the following:

- **Make sure you have loaded the paper correctly, paying special attention to both paper selectors.**

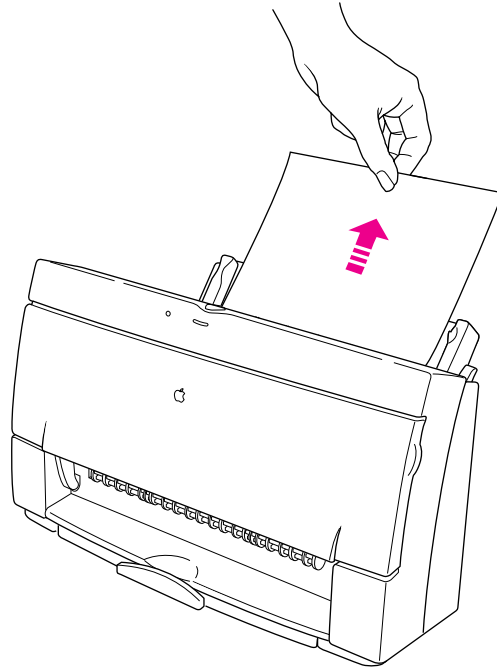
For instructions on loading paper, see “Loading the Sheet Feeder” in Chapter 2.

- **Do not overload the sheet feeder.**

The feeder holds up to 15 envelopes or up to 100 sheets of 20-pound paper. If you use heavier paper, fewer sheets will fit in the feeder.

- **Do not force paper into the sheet feeder.**

- Try to remove any torn or damaged pieces of paper from the printer.



See “Paper Is Jammed,” earlier in this chapter.

- **Take the paper out of the sheet feeder and check it.**

Make sure none of the sheets is curled, bent, or dog-eared.

Make sure the edges of the stack line up evenly.

Make sure the left paper guide isn't too snug or too loose. The stack should lie flat (not bowed).

Make sure the paper doesn't slide down into the printer.

Load either envelopes or paper (not both) into the sheet feeder.

Make sure you have inserted envelopes correctly. The flaps should lie flat against the envelope, the edges should be smoothed flat, and no air should be trapped in the envelopes.

When loading back-print film, put a sheet of plain paper at the back of the stack.

When loading transparencies, the shiny side should face you. The edge where the paper and the transparency are joined should point downward.

The Color StyleWriter 2500 won't print a particular document

If you attempt to print a document and no page is printed—not even a blank one—try the following:

- Check for messages on your Macintosh screen. Also, open the window for your printer by double-clicking its desktop icon.
- Your computer may be low on memory. See “Memory Is Low,” later in this chapter.
- Turn the printer off, then on again. (This resets the printer.)
- Repeat the printing process.

Sometimes problems disappear when you try to print your document again.

- Printing problems can often be caused by errors in your programs. If you can print from the SimpleText or TeachText program but not from another program, it's probably a problem with that program. Contact the publisher of that program for help.
- Restart your Macintosh.

The printer acts as if it's working, but nothing is printed on the page

If your printer takes the paper, but doesn't actually print anything, try the following:

- If the ink cartridge is new, make sure that you removed the orange tape from its print head.
- Make sure the ink cartridge and the ink tanks in the four-color cartridge are correctly installed. (For instructions, see “Replacing Ink Tanks in the Four-Color Ink Cartridge” and “Replacing the Ink Cartridge” in Chapter 4).
- The printer may be out of ink. You can check by seeing whether the test page prints. To print a test page, see “Checking the Print Nozzles” in Chapter 1.

Messages appear on your computer screen

Most messages that appear on your screen are self-explanatory. For example, they may tell you that the printer is out of paper or that the paper is jammed. Once you correct the problem, the message goes away.

Here are some other problems that on-screen messages might report:

Serial port in use by another application

Restart your computer before trying to print again.

The waste ink container in the printer is full.

From time to time, the printer deposits some ink into a waste container. In the rare event that the container becomes full, Apple recommends that you take the printer to an Apple-authorized service provider.

There is an error in the printer.

Check to make sure the cable is still connected to the printer and the computer. Also, make sure the ink cartridge is seated properly. Turn on the printer and open the printer's cover. Make sure the cartridge is inserted properly, and that the blue lever on the side of the carrier is firmly lowered to secure the cartridge in place.

The printer detects an end of paper error.

Make sure that you are using a valid size of paper, and that you indicate the size in the Page Setup dialog box. Valid sizes for the Color StyleWriter 2500 are: U.S. Letter, U.S. Legal, A4 Letter, Executive, #6 envelopes, and #10 envelopes. Other sizes may not work correctly.

No Paper or Wrong Paper Size

These messages usually mean what they say. Occasionally they appear when you have the wrong port indicated in the Chooser. See “Telling Your Computer to Use the Color StyleWriter 2500” and “Special Information for PowerBook Owners” in Chapter 1.

Memory is low.

See the next section.

Memory is low

Once in a while, your computer may be temporarily low on random-access memory (RAM).

Symptoms that indicate a memory problem.

- Some documents do not print.
- Some text incorrectly appears in the Geneva font.
- Characters look jagged.
- An “out of memory” message appears on your screen.

If you have a memory problem, try the following:

- Run only one program at a time; quit the ones you’re not using.
- If memory has been severely fragmented, you should quit all open applications, then reopen just the one you’re using.
- Increase the amount of memory you give to the program you’re printing from by using the Get Info command (as explained in the instructions that came with your Macintosh).
- Turn off background printing. See “Printing While You Use Your Computer” in Chapter 2.
- In the Page Setup dialog box, choose Portrait (normal) orientation instead of Landscape (sideways) orientation.
- Don’t print your documents with watermarks.
- Choose “Black and White” from the Image pop-up menu in the Print dialog box. Printing in black and white takes the least memory.
- When you print in the background, if you often get a message that there is not enough memory to print on a certain desktop printer, you can give that desktop printer more memory by selecting its icon and choosing the Get Info command. Then increase the number in the Preferred Size box. (For more information on increasing a program’s memory, see the documentation that came with your Macintosh.)
- Remove desktop printing. See Appendix F.



- Turn on virtual memory in the Memory control panel. Virtual memory is described in the instructions that came with your computer. (*Note:* Using virtual memory can slow down your computer.)
- As long as there are any print requests waiting to be printed, Desktop PrintMonitor (the desktop printing software) remains active in memory, even when background printing is off. If you are not printing in the background, you can remove all print requests from your desktop printer queues to reduce memory requirements by 160K.
- Obtaining additional RAM for your computer can solve some of these problems and improve printing speed.

Documents did not print as expected

If the quality of printing is OK—not smeared or incomplete—but the result is not as you expected, you may have made a mistake in using the printer software. Check the subsections that follow for suggestions.

Text appears in the Geneva font or prints jagged

When your Macintosh computer is low on memory, it may display and print certain fonts in the Geneva font. (Geneva looks like this.) Some text may also have jagged edges. To fix low-memory problems, see the preceding section, “Memory Is Low.”

If you’re printing to a shared StyleWriter that is not directly connected to your computer and you use Adobe™ Type Manager, the PostScript™ version of your fonts must be installed on the computer that is directly connected to the StyleWriter.

For more information about fonts, see Appendix B, “Using Fonts With the Color StyleWriter 2500.”

Some rotated text may print jagged if you apply a style that has not been defined for the font. Try applying plain style to the text.

Text prints, but pictures do not

Some advanced page layout and art programs use the PostScript page description language, a language that the Color StyleWriter 2500 does not understand. If your programs have a PICT preview option, you can print the file on a Color StyleWriter 2500.

Page breaks change unexpectedly

Most programs determine where to break pages by evaluating the information you provide in the Page Setup dialog box. Also, different types of printers space text in slightly different ways. The following actions can cause page breaks to change:

- changing from one type of printer to another
- changing the page size in the Page Setup dialog box
- scaling the document in the Page Setup dialog box
- changing the orientation in the Page Setup dialog box

It's best to choose the printer you want and the Page Setup options you need before working on your page breaks.

A page prints off center

This problem may result from one of the following conditions:

- You have selected the wrong page size in the Page Setup dialog box.
- The margins are set incorrectly in the document you are printing.
- Paper is not placed properly in the sheet feeder. See “Paper or Envelopes Feed Improperly” earlier in this chapter.
- You are not using recommended printing materials.

Text lines up in columns on the screen but not when it prints

You may have used spaces (rather than tabs) to line up the text. Because printers interpret spaces differently than the screen does, the text may fail to line up when you print it. Try replacing the spaces with tabs.

You can also make columns by using spaces with a monospace font—such as Courier or Monaco—instead of tabs. A monospace font is one in which every character has the same width.

Everything prints backwards

Choose the Print command and check what paper type you've selected in the dialog box that opens. If you indicate that you're printing on back-print film, the printer reverses the image.

There are watermark problems

The wrong watermark printed.

If you selected one watermark, but a different one printed, you can fix it by changing the modification date and time of one of the watermark files. To change the modification date, open one of the files, then save it using the Save As command. (The watermark files are stored in the Printing Prefs folder, which is in the Preferences folder inside the System Folder.) When asked if you want to replace the file, say yes.

I created a new watermark, but it doesn't show up in the dialog box.

- Make sure the watermark was saved as a PICT or PICT2 file.
- Make sure the file was saved in the Printing Prefs folder, which is in the Preferences folder inside the System Folder.

Print quality is poor

Most image problems are caused by problems with an ink cartridge or with your choice of paper. Don't use the following types of paper:

- erasable typing paper
- damaged, wrinkled, or stapled paper
- multipart forms ("carbonless carbons")
- glossy paper, unless its especially designed for StyleWriter printers

For best print quality, use coated or glossy paper or back-print film. If you use plain paper, use 16- to 24-pound copier paper; 20-pound paper is recommended. Plain papers can vary widely. If you're not happy with one kind of paper, try a different brand.

Colors skip or streak at the bottom of the page

If you're not happy with the quality of printing near the bottom of a page, change the setting for the bottom margin to 0.8 inch.

The image is too light or too dark

If printing looks fuzzy because it's too light or too dark, try the following:

- Check the nozzles in the print head. See “Checking the Print Nozzles” in Chapter 1 for instructions. If this doesn't help, replace one or both ink tanks in the four-color ink cartridge, or replace the black-only cartridge. See “Replacing Ink Tanks in the Four-Color Ink Cartridge” and “Replacing the Ink Cartridge” in Chapter 4 for instructions.
- Make sure you've chosen the correct paper type in the Print dialog box.
- If you're using plain paper, try flipping the stack of paper in the paper tray. Most paper has one side that's better for printing. If you're using other material, make sure you have it loaded in the correct orientation. See “Loading the Sheet Feeder” in Chapter 2.
- Try printing on a different kind of paper.
- Try choosing Best print quality in the Print dialog box.
- Make sure that both paper selectors (one inside the printer, the other on the sheet feeder) are set to the correct position. See “Loading the Sheet Feeder” in Chapter 2.

Thin lines fade or break up

Pick a darker color for the affected object, or try printing with the Pattern halftoning option selected. (In the Print dialog box, click the Options button, then click the Pattern button.)

The ink smears when rubbed

Don't handle pages before the printer ejects them from the printer and delivers them into the output tray. This allows all the time needed for the ink to dry.

Pages leave the printer smeared, blurred, or smudged

The print head may be too close to the paper it's printing on. Move the internal paper selector to the envelope (✉) position. See “Loading the Sheet Feeder” in Chapter 2.

Printing appears on only part of the paper

Check the selections in the Page Setup dialog box.

Check the nozzles in the print head. See “Checking the Print Nozzles” in Chapter 1 for instructions. If this doesn’t help, replace one or more ink tanks in the four-color ink cartridge, or replace the black cartridge. See “Replacing Ink Tanks in the Four-Color Ink Cartridge” and “Replacing the Ink Cartridge” in Chapter 4 for instructions.

Colors don’t look right on the printed page

Try the following:

- Print a test page to see if you’ve run out of ink. For instructions, see “Checking the Print Nozzles” in Chapter 1.
- Try printing the image with ColorSync turned on. For instructions, see “Adjusting Color Options” in Chapter 2.
- Use a different type of paper.

Unwanted horizontal white lines or stripes appear

Problems with print quality, especially horizontal white lines in your document, may mean a nozzle on the print head is clogged or your ink cartridge is running out of ink. There are two ways to solve the problem:

- Cleaning the print head is the faster method. It forces a nozzle cleaning as part of a print job. In other words, you can tell the printer to clean the print head before it starts printing the next document.
- Printing a test page also cleans the print head. It gives you a test pattern you can evaluate, but it takes a bit longer.

IMPORTANT Cleaning the print head consumes a small amount of ink. If you repeat the procedure unnecessarily, you reduce the life of your cartridge.

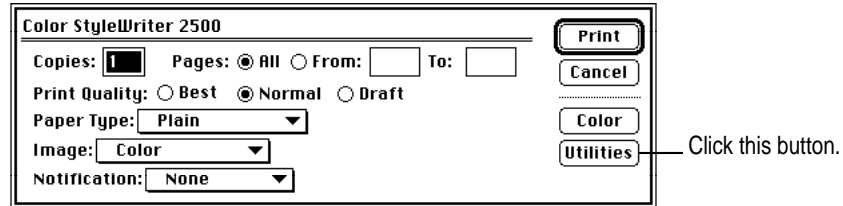
Explanations of both procedures follow.

Cleaning the print head

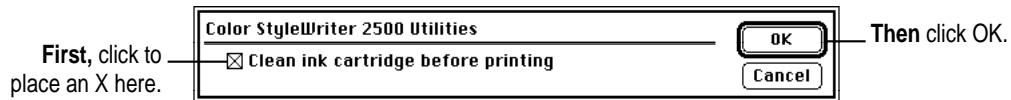
To clean the print head, follow these steps:

- 1 **When you are about to print a document, click Utilities in the Print dialog box.**

Note: If the printer is being shared by using ColorShare, you must print the document from the computer that is directly connected to the printer.



The Utilities dialog box opens.



The Utilities dialog box closes, and the Print dialog box reappears.

- 2 **In the Print dialog box, click Print.**

The printer cleans the print head before printing your document.

Note: After the printer cleans the print head and prints your document, the cleaning option is automatically turned off. You don't have to turn it off before printing again.

Printing the test page

To print the test page, follow these steps:

- 1 Turn off the printer.
- 2 Make sure you've loaded U.S. letter-size or A4 paper into the printer.
- 3 Press and hold down the power button until the power light starts to blink.
- 4 Release the power button and wait for the test page to print.
- 5 Examine the nozzle test pattern for broken or missing horizontal lines.

The nozzle test pattern appears near the bottom of the test page. The test pattern for the four-color ink cartridge looks like this:

A broken line means a nozzle on the print head needs to be cleaned.

A missing color means you need to replace an ink tank (or the black-only cartridge).



The test pattern for the black-only ink cartridge looks like this:



- 6 If you see a broken line, try the following:
 - If you see a missing color, replace the ink tank containing the missing color. (Or replace the black-only ink cartridge if that's what you used to print the test page.)
 - If you see a broken line, clean the print head. (For instructions, see the previous section, "Cleaning the Print Head.")

The image prints wavy or distorted

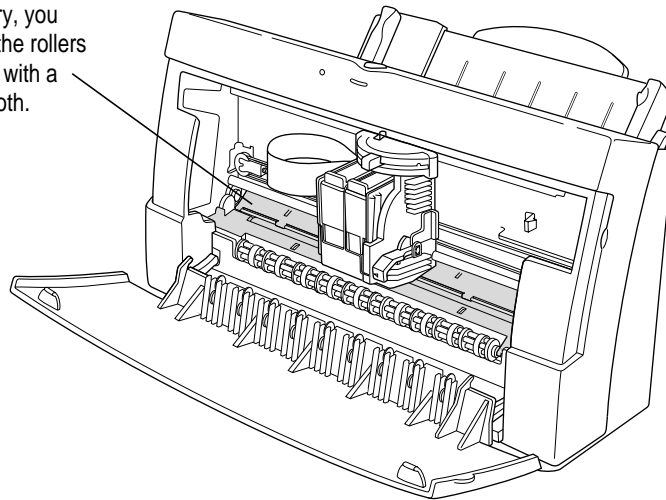
Make sure that you are using a recommended type of paper. Check the setting of the internal paper selector above the ink cartridge. If the problem persists, see the information about service and support that comes with the printer.

Stains appear on printed pages

Stains on the backs or tops of printed pages may mean that ink has spilled inside the printer. If so, the ink can transfer to the rollers and from there to the paper.

Turn the printer off and unplug it. Then open the printer and carefully clean the rollers and platen with a soft, dry cloth.

If necessary, you can clean the rollers and platen with a soft, dry cloth.



Ink tanks and cartridges run out of ink too quickly

To extend the life of your ink cartridges, try the following:

- Select Draft print quality in the Print dialog box whenever you can.
- Don't clean the print head unless necessary.
- Don't print solid background colors unless necessary.
- Don't open the printer's cover unnecessarily. (After you shut the cover, the printer cleans the print head, which uses up ink.)
- Don't unplug the printer or otherwise discontinue power frequently.
- Don't print the test page unless necessary.
- If you print mostly black and white documents, use the optional high-performance black ink cartridge.



Appendix A Technical Information



General specifications

Marking engine

- Thermal ink jet engine

Resolution

The resolution differs according to the quality of printing you select. It is expressed in horizontal by vertical dots per inch (dpi).

- Best: 720 x 360 dpi, with optimal ink density (automatically chosen for the paper you've selected)
- Normal: 360 x 360 dpi
- Draft: 180 x 180 dpi

Engine speed

- Printing speed depends on the images printed and on the Macintosh computer used.

Connector cable

- Apple System/Peripheral-8 cable

Interface

- High-speed serial (RS-422)
- Optional LocalTalk
- Optional EtherTalk

Fonts

- TrueType font support
- 64 TrueType fonts available, consisting of the 43 that come with the Color StyleWriter 2500 and the 21 that come with Macintosh system software (see Appendix C for a list of available fonts)
- Adobe PostScript font support when used with Adobe Type Manager software (sold separately by Adobe Systems Incorporated)

Sheet feeder

- Holds up to 100 sheets of 20-pound (75 grams/meter²) paper or 15 envelopes.

Printing materials

- Plain paper: Use 16-pound (60-g/m²) to 24-pound (90-g/m²) paper.
- Accepts most letterhead and colored stock.
- Accepts medium-weight sheets of labels.
- Use #6 or #10 envelopes.
- Apple recommends back-print film, transparency film, coated paper, Premium Plus Coated Paper, and glossy paper especially designed for the Color StyleWriter 2500 printer. See your Apple-authorized dealer.

Paper sizes in millimeters (mm) and inches (")

- U.S. Letter: 215.9 mm x 279.4 mm (8.5" x 11")
- U.S. Legal: 215.9 mm x 355.6 mm (8.5" x 14")
- A4: 210 mm x 297 mm (8.3" x 11.7")
- Executive: 184.15 mm x 266.7 mm (7.25" x 10.5")
- #6 envelopes: 165.1 mm x 92.1 mm (6.5" x 3.625")
- #10 envelopes: 241.3 mm x 104.8 mm (9.5" x 4.125")

Printable area in millimeters (mm) and inches (")

- Maximum printable line in portrait (normal) orientation: 206.0 mm (8.11")
- Minimum margins
 - Left and right: 5 mm (0.20")
 - Top: 3 mm (0.12")
 - Bottom: 8 mm (0.31")

Dimensions in millimeters (mm) and inches (")

- Height: 211 mm (8.3")
- Width: 365 mm (14.4")
- Depth: 234 mm (9.2")

Weight

- Approximately 3.2 kilograms (6.9 pounds)

Operating environment

Temperature

- 15° to 30° C (59° to 86° F)

Relative humidity

- 10 percent to 80 percent, noncondensing

Storage environment

Temperature

- 0° to 35° C (32° to 95° F)

Humidity

- 5 percent to 95 percent, noncondensing

Power consumption

Operating

- 20 watts maximum

Power requirements for AC power adapter

The electrical requirements vary depending on the country for which your model was manufactured

Power supply

- AC power adapter

Apple part numbers

If you have trouble finding any of the following products, the part numbers may help you describe them to the dealer. Note, however, that part numbers sometimes change as products are enhanced.

Replacement ink tanks for four-color ink cartridge

- Black ink tank: M3330G/A
- Color ink tank: M3329G/A

Ink cartridges

- Color ink cartridge: M3328G/A
- High-performance black ink cartridge: M3240G/A

Connector cable

- Apple System/Peripheral-8 cable: M0197LL

Printing materials

- Apple Color Ink-Jet Transparency Film, Letter-size: M2658G/A
- Apple Color Ink-Jet Transparency Film, A4-size: M1959G/A
- Apple Color Ink-Jet Premium Coated Paper, Letter-size: M2952G/A
- Apple Color Ink-Jet Premium Coated Paper, A4-size: M2951G/A
- Apple Color Ink-Jet Premium Plus Coated Paper, Letter-size: M4792G/A
- Apple Color Ink-Jet Premium Plus Coated Paper, A4-size: M4791G/A
- Apple Color Ink-Jet Glossy Paper, Letter-size: M3655G/A
- Apple Color Ink-Jet Glossy Paper, A4-size: M3656G/A
- Apple Color Ink-Jet Back-Print Film, Letter-size: M2953G/A
- Apple Color Ink-Jet Back-Print Film, A4-size: M2954G/A

Available Options

- Color StyleWriter LocalTalk Module: M4615ZM
- StyleWriter EtherTalk Adapter
 - North America-style plug: M4775LL*
 - Japan-style plug: M4775J*
 - Continental Europe-style plug: M4775ZM*
 - United Kingdom-style plug: M4775B*
 - Australia-style plug: M4775X*





Appendix B Using Fonts With the Color StyleWriter 2500



A font is a collection of letters, numbers, and symbols in a distinctive typographic design. Your Macintosh computer and Color StyleWriter 2500 printer come with a variety of fonts that look great both on your monitor and on paper.

Fonts come in such a variety of formats that problems can sometimes arise. This appendix provides the information you need to avoid such problems and to solve them if they come up.

Kinds of fonts

The Macintosh works with three main kinds of fonts: TrueType, bitmapped, and PostScript fonts.

Apple provides two kinds of fonts with your Macintosh and the Color StyleWriter 2500 printer: TrueType and bitmapped. However, your system can use PostScript fonts as well when it has the proper software installed.

TrueType fonts

A TrueType font is scalable, describing a typeface without rigidly specifying a size. So it looks good whatever size you choose. TrueType fonts provide sharp text at any size on screen or on paper. You can mix and match TrueType fonts from various font vendors.



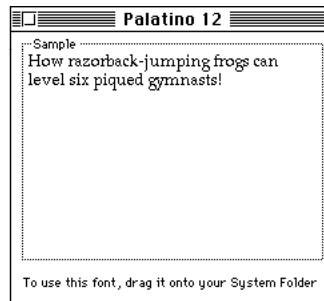
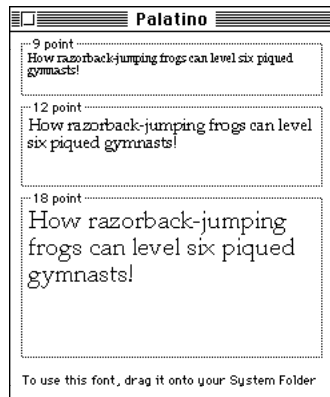
Courier

TrueType fonts store individual text characters as mathematical descriptions of lines and curves, rather than as groups of pixels (a bitmap). When a program asks for a character in a particular size, such as 33 points, the Macintosh uses mathematical calculations to enlarge the character's outline to 33 points and fill in the dots for the monitor or printer output.

Sometimes you'll still get jagged edges when you print a document, even when you use a TrueType font. In nearly all cases, this is because there isn't enough memory available to scale the font properly for printing. This may happen, for example, when you're running several programs at the same time.

Because you don't need a separate font for each character size in order for your printing to look good (as you do with bitmapped fonts), TrueType font names don't have numbers in them.

How does a font look? To see what a TrueType or bitmapped font looks like on your screen, double-click the font's icon to open it. A sample of that font appears (in three sizes for TrueType fonts and in the size you opened for bitmapped fonts).



You can also use the Key Caps desk accessory to examine fonts. See the documentation that came with your computer for instructions.

Bitmapped fonts

Bitmapped fonts consist of “pictures” of a typeface at specific sizes. For example, you might have bitmapped fonts at 10-, 12-, and 18-point sizes installed in your Macintosh computer. For best results you need a separate font file for each size of character you want to use.

The icon of a bitmapped font (also called a *fixed-size font* or *screen font*) has the single letter *A* on it. The font’s point size appears at the end of its name.



Monaco 12

When you request a bitmapped character, your Macintosh looks for an installed bitmapped font in the size you specified. (See “How the Macintosh Looks for Fonts” later in this appendix.) If it can’t find that font, your Macintosh tries to construct one by scaling a size that it does find.

In most cases, scaled bitmapped fonts don’t look nearly as good as preinstalled ones. Such scaling is one reason for the jagged edges (sometimes called “jaggies”) you’ll see on your screen or in a printed document when you request an uninstalled size (for example, 17-point Geneva).

Bitmapped fonts are designed on grids of 72 dots per inch (dpi)—the standard Macintosh screen resolution. Because of their correspondence to the standard screen resolution, bitmapped fonts in preinstalled sizes always look great on your display.

When you print a bitmapped font, it prints at a resolution of 72 dpi. Because most modern printers can print at resolutions far better than this (your Color StyleWriter 2500 prints at 360 dpi or better), printed bitmapped fonts almost always have jagged edges or stairstep sides.

Fortunately, the Macintosh can use bitmapped fonts in combination with other font formats, reserving bitmaps for the screen and other kinds of fonts for the printer.

PostScript fonts

PostScript is a page-description language that defines the characters, symbols, and images that appear on each page of a document. A PostScript font comes as a pair of fonts: an outline font for the printer and a corresponding bitmapped font for displaying type on your screen.

No bitmapped font, no menu entry: If your system doesn't have the bitmapped font, the PostScript font name won't appear in your font menu.



Certain printers are designed specifically to work with PostScript fonts. While your Color StyleWriter 2500 is not a PostScript printer, it can use PostScript fonts if you have Adobe Type Manager software installed. Adobe Type Manager uses printer fonts to generate clean-looking screen text at any size. (This software is included with some installations of system software 7.5. It is available from your local Apple-authorized dealer for version 7.1.)

IMPORTANT Adobe Type Manager is not an Apple product. It is made and supported by Adobe Systems Incorporated. Only the version that comes with Apple Macintosh system software version 7.5 is supported by Apple.

PostScript printer fonts have no numbers associated with their names, because a single font can be scaled to any size. Many companies make PostScript fonts; the following illustration shows icons for Adobe, Bitstream, and Fontek PostScript fonts, plus a generic PostScript font icon.



QuickDraw GX imaging technology

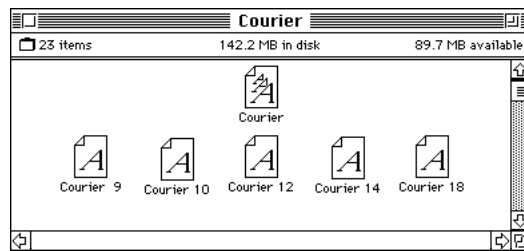
A QuickDraw GX font is a TrueType or PostScript font with an additional set of sophisticated features. These features include extremely accurate typographic elements such as ligatures and kerning, plus the ability to skew, rotate, and add perspective to text in extremely flexible ways.

How TrueType fonts work with other kinds of fonts

Although TrueType fonts offer distinct advantages, your Color StyleWriter 2500 printer can also use other kinds of fonts.

TrueType and bitmapped fonts

Macintosh computers running System 7 come with both bitmapped (screen) fonts and TrueType fonts installed. This maintains consistency with documents created on Macintosh systems that don't have TrueType fonts.



Bitmapped fonts look better displayed on the monitor, while TrueType fonts look better on a high-resolution printer such as the Color StyleWriter 2500. So, if you have both versions of the font available, the Macintosh uses the bitmapped version when displaying the font on the screen (provided that the size you're using is available) and the TrueType version when printing the font on the Color StyleWriter 2500. To force the Macintosh to use only TrueType fonts everywhere, you must remove the bitmapped fonts.

For example, if a document uses 12-point Times®, available in that size as a bitmapped font and as a TrueType font, the system uses the bitmapped font on the screen and the TrueType font on the printer. If a document uses 4-point Times, the system scales the TrueType font to that size for both the screen and the printer, because a bitmapped version isn't available.

Using only TrueType fonts produces a closer match between the appearance of type on the screen and on paper. However, a document you've already created with bitmapped fonts will be reformatted with the corresponding TrueType fonts, and line breaks in the document may change. Similarly, if a document is created on a system that has TrueType fonts or Adobe Type Manager software installed, it may have different spacing, kerning, and so on, when opened on a system that doesn't have TrueType fonts or Adobe Type Manager software.

Keeping two font versions available

If you have a TrueType version of a font, you don't need a bitmapped version. However, although keeping both versions of a font takes up more disk space, there are several advantages to doing so.

Bitmapped fonts are hand-designed: a graphic artist planned each character in each font to look good on a screen. TrueType fonts are scaled by the computer to match what you request. At smaller point sizes, the bitmaps may appear sharper.

Additionally, scaling fonts takes time—sometimes up to several seconds in slower Macintosh computers—but all Macintosh computers can display a bitmapped font instantly.

TrueType and PostScript fonts

PostScript fonts were designed as fonts for PostScript printers. The Color StyleWriter 2500 wasn't designed to use PostScript. However, if you have Adobe Type Manager software installed, your computer can both display and print PostScript fonts.

Use different names: To avoid confusing the printer software, be sure that you don't install both TrueType and PostScript versions of the same font. For example, do not have a PostScript font file called *Times* and a TrueType font file called *Times* installed in your system at the same time.



How the Macintosh looks for fonts

Here's the search order your Macintosh uses to determine which font to display on your screen when you choose a specific size:

1. an installed bitmapped font in that size, if one exists
2. a scaled TrueType font, if no bitmapped font exists
3. an Adobe Type Manager (ATM) version of a PostScript font, if ATM is installed and if no TrueType version exists
4. a scaled bitmap if no ATM font exists

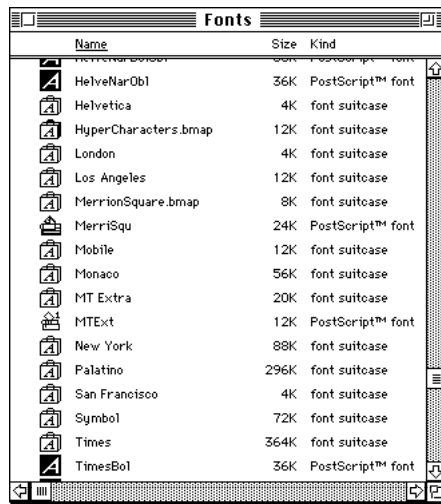
Here's the search order it uses to determine which font to print on your Color StyleWriter 2500 printer:

1. a scaled TrueType font, if one exists
2. an ATM version of a PostScript font, if ATM is installed and if no TrueType version exists
3. a scaled 72-dpi bitmap if no ATM font exists

Where fonts are stored

All fonts for your Color StyleWriter 2500 printer reside in special places within the System Folder. To install fonts, you drag them to the System Folder. Your Macintosh will automatically put them where they belong—in the Fonts folder within the System Folder.

The Fonts folder can contain a total of 128 font suitcases (described in the next section), plus any number of PostScript fonts, up to the available storage capacity of your hard disk.



IMPORTANT Fonts installed in other folders or in the top level of the System Folder may not work correctly. Additionally, bitmapped and TrueType fonts stored outside of suitcases may not work correctly.

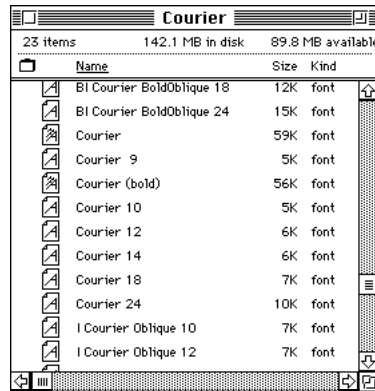
Suitcases

A font suitcase is a special folder for collections of fonts.



Courier

Suitcases provide a convenient way to organize fonts in the same font family. For example, it's a good idea to use a single suitcase (called *Courier*) for all fonts in the Courier font family—all Courier roman fonts as well as fonts with names like Courier Bold and Courier Oblique.



Combining suitcases: To merge all the fonts from one suitcase with another, drag one suitcase on top of the other. All the fonts from the dragged suitcase will go into the other, and the dragged suitcase will disappear.

Note: To avoid confusion, rename a font suitcase whenever you put more fonts into it. For example, if you decide to merge Helvetica, Helvetica Black, and Helvetica Compressed, name the suitcase something like “Helvetica Regular/Black/Condensed.”

A suitcase can also contain fonts from different font families, although you should keep all fonts of the same family in the same suitcase. All the fonts will still appear in menus with their proper names.

You treat a suitcase as you would a folder. To open a suitcase, you double-click it. To add a font, you drag the font’s icon to the suitcase and drop it in. To remove a font, you drag its icon out of the suitcase.

To create a font suitcase, duplicate an existing one and throw away its contents. Then rename the suitcase as appropriate and drag whatever fonts you want into it.

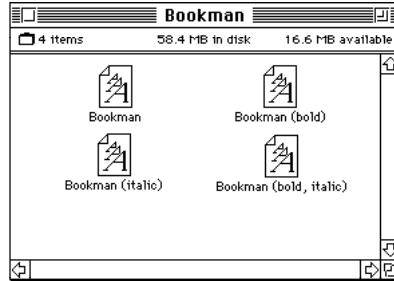
You cannot have more than 128 font suitcases in the Fonts folder.

Size limits for suitcases: No matter how many fonts you have in a single suitcase, the Fonts folder counts the suitcase as a single unit. There’s no limit to the number of fonts in a single suitcase, but the suitcase cannot be larger than 16 megabytes.



Styled fonts

Most fonts that come with your Color LaserWriter 12/600 PS-J printer have defined styles. For example, if you open the Bookman font (contained in a suitcase in the Fonts folder, which is inside your System Folder), you see files for bold and italic versions of the font.



But fonts such as Chicago, Geneva, Monaco, and New York do not come with defined styles. If you open the Chicago font suitcase, you see only one file.



You can apply a style to a font like this by making a choice from the appropriate menu (Fonts, Style, Format, or some similar menu, depending on the application program). A font predesigned with a given style nearly always looks better than a font with a computer-generated “derived” style.

About style names: Predesigned styled fonts sometimes have names you may not be familiar with. For example, *roman* refers to a font without styling, or plain. *Oblique* is similar to italic. *Light*, *demi*, and *extra* are different kinds of bold.

Common questions about fonts

Here are some questions that often come up about fonts.

What kind of fonts should I buy?

Using a font that has both bitmapped and TrueType versions works best. The bitmapped version looks great on the screen and the TrueType fonts print beautifully on the Color StyleWriter 2500.

Avoid bitmapped fonts that don't have TrueType versions because they print with jagged edges on the Color StyleWriter 2500. By contrast, TrueType fonts work well, even if you don't have a bitmapped version.

If you have a PostScript printer or Adobe Type Manager, PostScript fonts look great on paper. The Color StyleWriter 2500 is not a PostScript printer.

People who need professional typographic features such as swash characters and proportional space numerals might also consider using QuickDraw GX and QuickDraw GX TrueType fonts.

Why don't all of my fonts appear in the Fonts menu?

You may not have all of your fonts placed correctly. All the fonts should be installed in the Fonts folder in the System Folder.

Additionally, some application programs let the user decide which fonts should appear in the Fonts menu. Check the manuals that came with your programs.

Why can't I see my Monaco 9, Geneva 9 and 12, and Chicago 12 bitmapped fonts?

These fonts are used by your Macintosh to display information. Because the Macintosh needs these fonts, the Finder makes them invisible to prevent users from removing them.

What does the term *Apple classic fonts* mean?

The Apple classic fonts are the original ten bitmapped fonts that came with the first Macintosh in 1984. These fonts, which all have city names, include Athens, Cairo (a picture font), Chicago, Geneva, London, Los Angeles, Monaco, New York, San Francisco, and Venice. Several of the fonts (Athens, Cairo, London, and San Francisco) came in only one size—18 points.

This is a sample of Athens.



This is a sample of Chicago.

This is a sample of Geneva.

This is a sample of London.

This is a sample of Los Angeles.

This is a sample of Monaco.

This is a sample of New York.

This is a sample of San Francisco.

This is a sample of Venice.

Chicago, Geneva, Monaco, and New York are currently available in TrueType versions. The other classic fonts are still only available in bitmapped versions.

Why do I sometimes get Geneva or Courier in my printed documents when I have specified other fonts?

Geneva sometimes appears when you're trying to use a TrueType font but don't have enough memory for scaling to operate properly.

Substitute fonts can also appear in a document composed on one Macintosh that has a particular set of fonts but printed on another Macintosh that doesn't have those fonts.

Why does a document written entirely in Times look different on different Macintosh computers?

Times, an extremely popular font, is manufactured and sold by more than one company. Such fonts usually have small differences, even though they have the same name. For example, the Times font manufactured by Adobe Systems Incorporated, has different letterspacing than does the Times font from Apple Computer, Inc.

What is font substitution?

Font Substitution, which isn't available for your Color StyleWriter 2500 printer, is an option in the Page Setup dialog box for certain PostScript printers. When font substitution is turned on, these printers will use their built-in equivalents for three bitmapped fonts (Times for New York, Helvetica for Geneva, and Courier for Monaco).

What's a downloadable font?

A downloadable font is a TrueType or PostScript font sent to some kinds of printers, such as most PostScript Laser printers, by your system software. The printer then uses the font to print your document.

If a printer has sufficient memory, it can hold more than one downloaded font; otherwise, it must request the fonts it needs as necessary. This can be a time-consuming process.

Some printers have hard disks attached to them for holding downloaded fonts. A printer can get the fonts from its hard disk more quickly than it can download them from the computer's hard disk.

Your Color StyleWriter 2500 printer cannot receive downloaded fonts. Instead, your Macintosh composes the entire image and then sends it to your Color StyleWriter 2500 for printing.



Appendix C Font List



Between the fonts that come with your Macintosh and those that come with the printer, there are 28 font families (and 64 total styled fonts) available as soon as you install the Color StyleWriter 2500 software.

Name in Font menu	Number of fonts	Font family (and styled fonts)	Comes with
Avant Garde	4	ITC Avant Garde® (plain, italic, bold, and bold-italic)	Color StyleWriter 2500
Bookman	4	ITC Bookman® (plain, italic, bold, and bold-italic)	Color StyleWriter 2500
Chicago	1	Chicago	Macintosh
Courier	4	Courier (plain, italic, bold, and bold-italic)	Macintosh
DELPHIAN	1	Delphian	Color StyleWriter 2500
Garamond Narrow	4	ITC Garamond® Narrow (plain, italic, bold, and bold-italic)	Color StyleWriter 2500
Geneva	1	Geneva	Macintosh
Helvetica	4	Helvetica® (plain, italic, bold, and bold-italic)	Macintosh
Helvetica Black	2	Helvetica Black (plain and italic)	Color StyleWriter 2500
Helvetica Compressed	2	Helvetica Compressed (plain and italic)	Color StyleWriter 2500

continues ►

Name in Font menu	Number of fonts	Font family (and styled fonts)	Comes with
Lubalin Graph	4	ITC Lubalin Graph® (plain, italic, bold, and bold-italic)	Color StyleWriter 2500
Lucida Bright	4	Lucida Bright (plain, italic, bold, and bold-italic)	Color StyleWriter 2500
MACHINE	1	ITC Machine®	Color StyleWriter 2500
Monaco	1	Monaco	Macintosh
N Helvetica Narrow	4	Helvetica Narrow (plain, italic, bold, and bold-italic)	Color StyleWriter 2500
<i>Nadianne</i>	2	Nadianne (plain and bold)	Color StyleWriter 2500
New Century Schoolbook	4	New Century Schoolbook (plain, italic, bold, and bold-italic)	Color StyleWriter 2500
New York	1	New York	Macintosh
Old English Text	1	Old English Text	Color StyleWriter 2500
Onyx	1	Onyx	Color StyleWriter 2500
Oxford	1	Oxford	Color StyleWriter 2500
Palatino	4	Palatino® (plain, italic, bold, and bold-italic)	Macintosh
<i>Swing</i>	1	Swing	Color StyleWriter 2500
Σψμβολ (Symbol)	1	Symbol	Macintosh
Times	4	Times® (plain, italic, bold, and bold-italic)	Macintosh
<i>Zapf Chancery</i>	1	ITC Zapf Chancery®	Color StyleWriter 2500
☼☼☼☼ ☼☼☼☼☼☼☼☼☼☼☼☼	1	ITC Zapf Dingbats®	Color StyleWriter 2500
(Zapf Dingbats)			
⌘ ⤴ ⤵ ⤶ (Zeal)	1	Zeal	Color StyleWriter 2500
Total	64		



Appendix D Working With ColorSync



The Macintosh does a lot of work to make sure that the colors you see on your display closely match the colors you get on your printers, scanners, and other devices. The software that does this work is called ColorSync. Because ColorSync does its work behind the scenes, you don't have to know anything about it. But if you're curious, this appendix explains how ColorSync works and how you can benefit from using it.

The problem that ColorSync solves

Providing consistent color with desktop computers is a technical challenge. Reproducing colors consistently from device to device is difficult because the colored light on your monitor is very different from printed ink. Different color devices use different methods for representing color information and produce different ranges of colors.

Monitors (and most scanners) produce colors by mixing red, green, and blue light—called RGB color. Most printers produce colors by mixing cyan (a shade of blue), magenta (a bright pink), yellow, and black ink. This color system is called CMYK. Since monitors and printers have different color capabilities, they cannot reproduce each other's colors exactly.

In addition, no two monitors or printers produce exactly the same colors. (You can see an example of the differences among monitors at a consumer electronics store, in the section that sells television sets.)

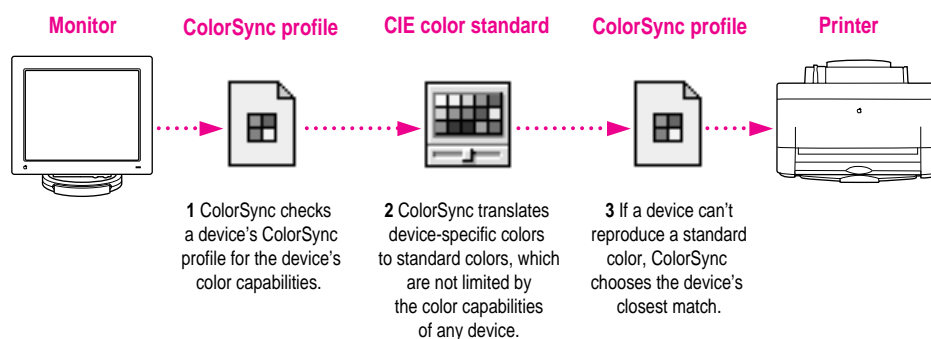
About ColorSync

ColorSync is a system extension that provides color-conversion capabilities and improves color consistency. ColorSync “translates” the colors used on one device so that they match the colors displayed or printed on another device.

ColorSync color conversion is a central part of Macintosh computing, ensuring that applications, monitors, printers, scanners, and digital cameras use the same scheme for color conversion. This means you can scan an image, display it on your monitor, and print it—with visually matching colors every step of the way.

How ColorSync works

ColorSync does not convert colors directly from one device to another. Instead, ColorSync takes information about each device’s color capabilities and compares it to an independent color standard. In this way, it converts the colors produced on one device to closely matching colors that can be reproduced on another device.



ColorSync defines the colors a monitor, printer, scanner, or digital camera can reproduce in a ColorSync profile. ColorSync profiles are compatible with the profile specifications of the International Color Consortium (ICC).

Next, ColorSync converts device-specific colors into standard colors. The CIE color standard describes colors in terms of how they are perceived by the human eye under standardized lighting conditions. (CIE stands for the Commission International de l’Eclairage, the International Commission on Illumination, which founded the standard in 1931.)

To maintain consistency, ColorSync previews a device’s color capabilities (in the ColorSync profile) and—where necessary—converts standard colors to closely matching colors that the device can reproduce. For example, your monitor may be able to display a vivid red, but your printer inks may not be able to produce that color. ColorSync determines the “next best” color for your printer to use.

Using ColorSync

The ColorSync profile for a device is automatically installed as part of the device’s software. To get the best visual color matching on your system, make sure the following display settings are selected:

- For the best color match when printing, select the “page-white” or “D50” system profile for your type of display in the ColorSync System Profile control panel.
- For the best visual match between the colors on your display and printed colors, select the Page-White Gamma option in the Monitors control panel. To select a gamma option, open the Monitors control panel, then hold down the Option key while you click the Options button. In the Options window, click the Use Special Gamma checkbox to put a check in it. Then choose Page-White Gamma from the menu.
- On a multiple scan display, make sure that the color temperature, or intensity, is set to 9300 K (the default setting). See the display manual for instructions. If the Page-White Gamma option is selected with a color temperature other than 9300 K, your monitor colors could look too red or too blue compared to printed colors.

Some color devices allow you to set additional color options that affect the way ColorSync converts colors. See the instructions that came with the device for more information.

Appendix E Printing with QuickDraw GX

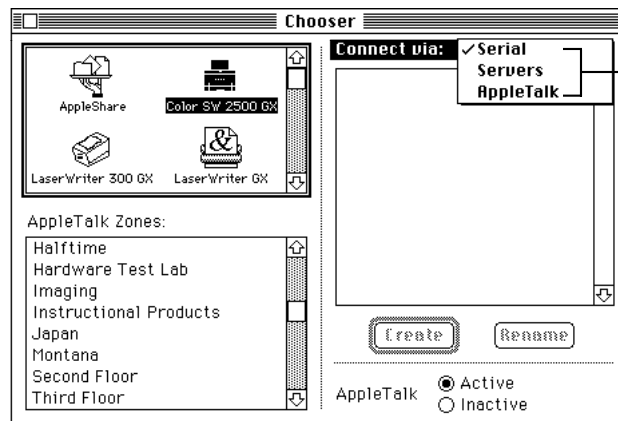


This appendix explains how to use the QuickDraw GX software with the Color StyleWriter 2500. (If you installed QuickDraw GX after you set up your printer, you must reinstall the Color StyleWriter 2500 software.)

Telling your computer to use the Color StyleWriter 2500 with QuickDraw GX

Make sure the printer and your computer are connected and turned on.

- 1 Select the Chooser from the Apple () menu.
- 2 In the Chooser dialog box, use the “Connect via” pop-up menu to choose the appropriate type of connection.



If the printer is connected directly to your Macintosh with a serial cable, choose Serial.

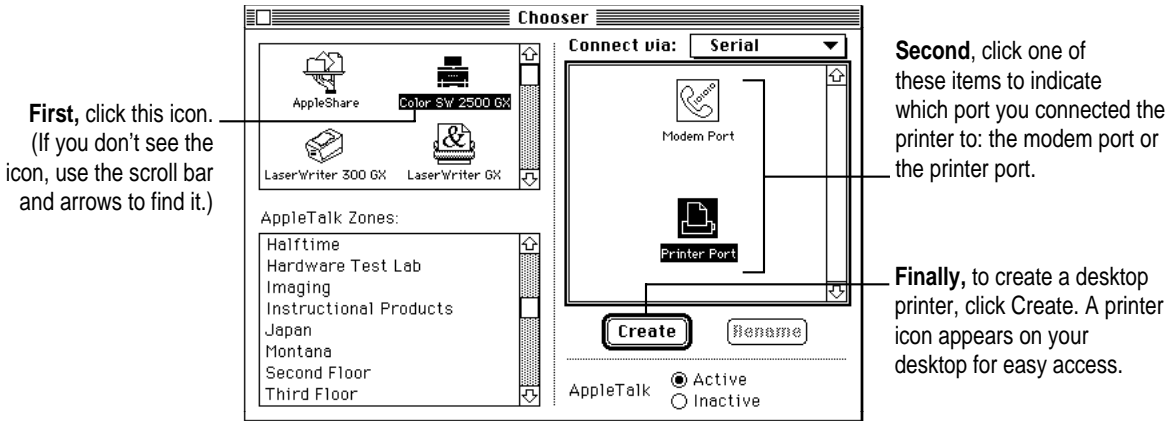
If the printer is connected to a Macintosh on the network and is available as a shared device, choose Servers.

If the printer is connected to the AppleTalk network, choose AppleTalk.

Note: If QuickDraw GX is installed on your Macintosh, background printing is always on and cannot be turned off.

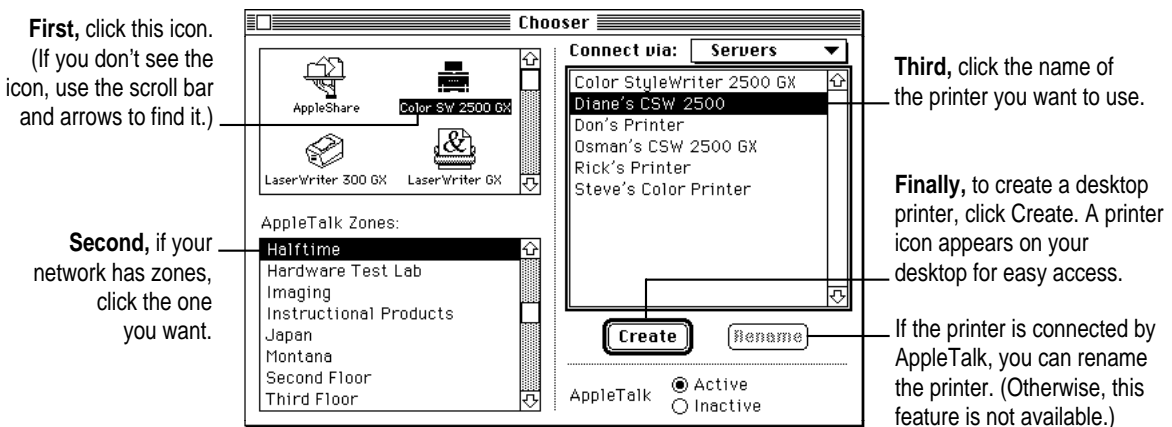
3 In the Chooser dialog box, click items to select them.

Some Chooser features change, depending on the selection you made in step 2. If you chose Serial in step 2, the Chooser looks like this:



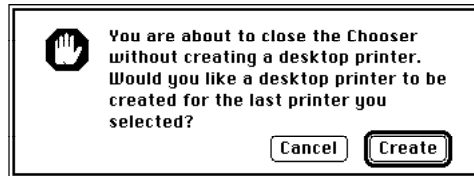
If no port is available and your computer is a PowerBook, see “Special Information for PowerBook Owners” in the section “Telling Your Computer to Use the Color StyleWriter 2500” in Chapter 1.

If you chose Servers or AppleTalk, the Chooser looks like this:



4 Close the Chooser dialog box.

If you close the Chooser without creating at least one desktop printer, this message appears.



To use a printer for which you have no desktop icon, you must select the printer in the Chooser and click Create. If you select the printer but don't click Create, the Chooser ignores the selection.

Defining the page setup

Most Macintosh programs have a Page Setup command in the File menu. You can use this command to set a variety of options. The most common options are already selected for you, but you can change them if you want to.

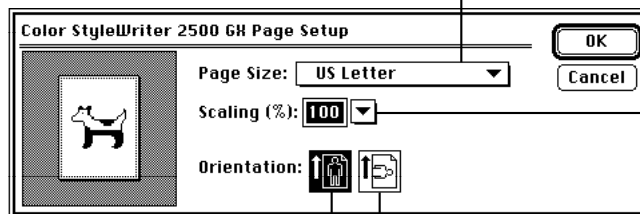
1 Choose Page Setup from the File menu.

The Page Setup dialog box appears, as shown in the next step. The dialog box you see may not exactly match any of the illustrations in step 2, but it works basically the same way.

2 In the dialog box, make the selections you want.

If you're working in a program that doesn't take full advantage of QuickDraw GX (is not "GX-savvy"), a dialog box similar to the one below appears.

Use this pop-up menu to identify the paper or envelope size you are using.

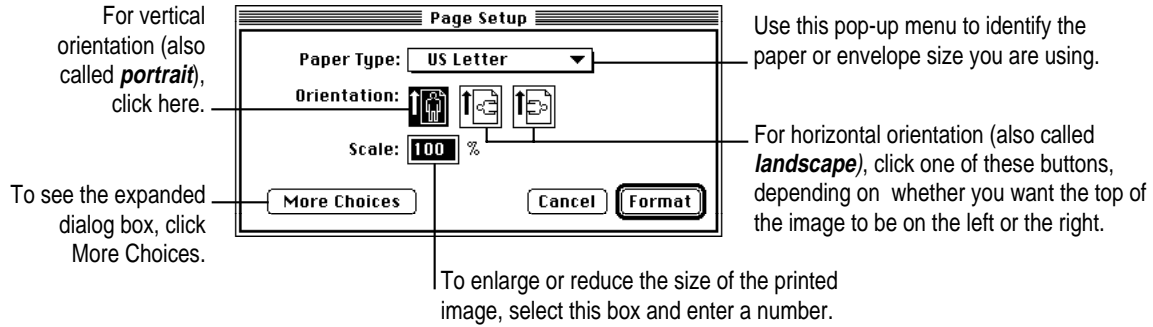


For vertical orientation (also called *portrait*), click here.

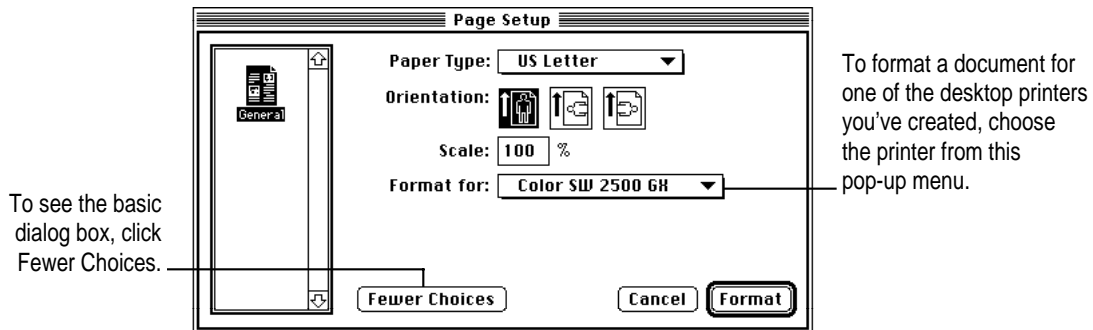
For horizontal orientation (also called *landscape*), click here.

To enlarge or reduce the size of the printed image, choose from this pop-up menu. (Or you can type a number.)

If you are using a GX-savvy program, there are two versions of the Page Setup dialog box. This is the basic version:



In the expanded dialog box, you can select a specific printer.



3 When you've made your choices, click **Format** (or **OK** in a program that's not GX-savvy).

Your document is now set up for printing.

Printing a document

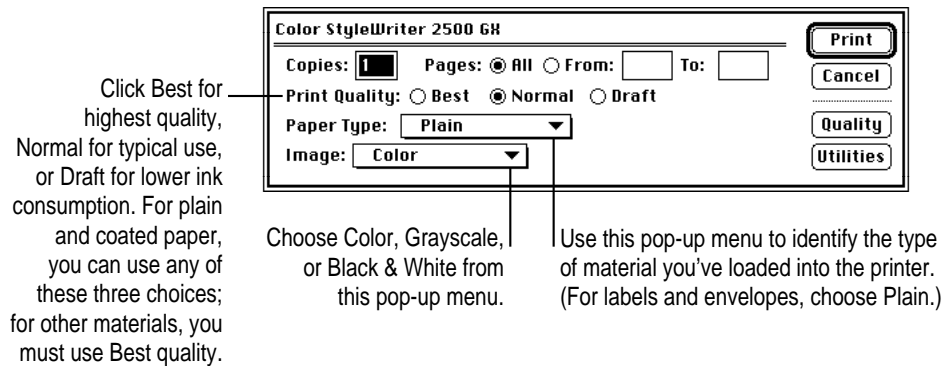
To print a document, follow these steps:

- 1 **Open the document you want to print, or select its icon in the Finder.**
- 2 **Choose Print from the File menu.**

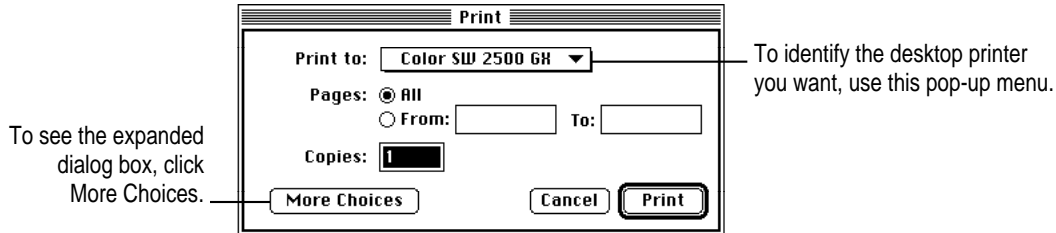
A dialog box appears, displaying a number of printing options. The dialog box you see may not exactly match any of the illustrations in step 3, but it works basically the same way. The most common options are already set for you.

- 3 **Set any options you like.**

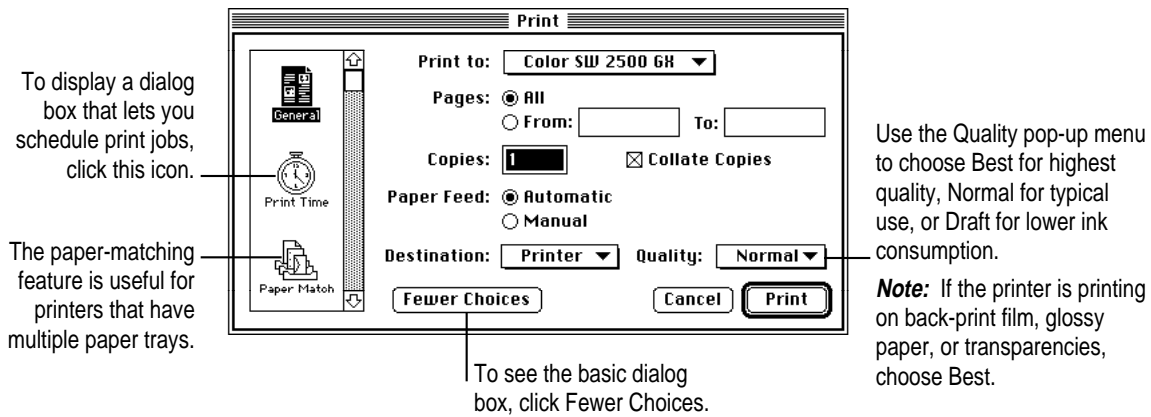
If you're working in a program that isn't GX-savvy, a Print dialog box similar to the one below appears.



If you are using a GX-savvy program, there are two versions of the Print dialog box. This is the basic version:



In the expanded dialog box, you can make additional choices.



4 When you are satisfied with the settings, click Print.

If necessary, the printer turns itself on and, after a few moments, begins printing your document. Don't open the printer cover while the document is printing. (This can waste ink and cause a paper jam.)

Adjusting quality options

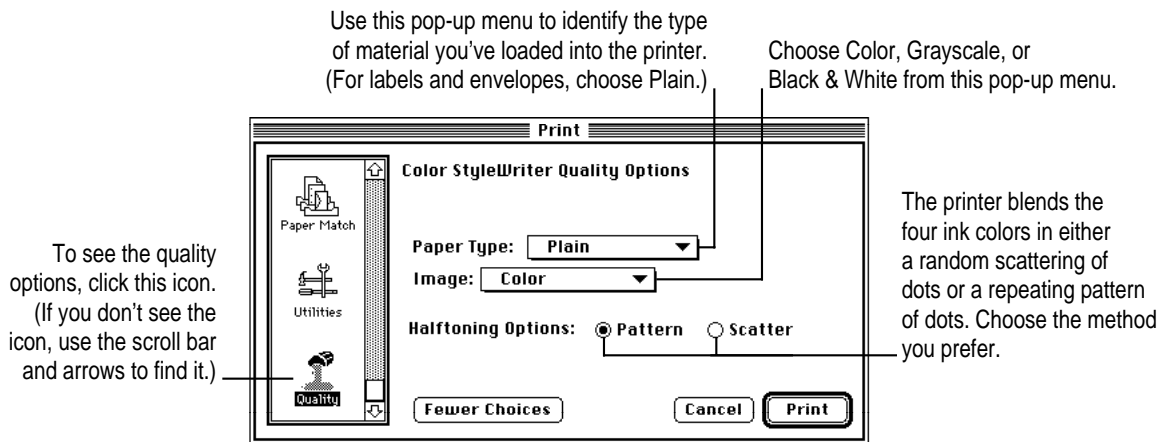
To adjust the way colors are printed, follow these steps:

1 Choose Print from the File menu.

2 Make sure the expanded dialog box appears.

If necessary, click More Choices.

3 In the expanded dialog box, click the Quality icon and set any options you like.



4 When you are satisfied with the settings, click Print.

If necessary, the printer turns itself on and, after a few moments, begins printing your document. Don't open the printer cover while the document is printing. (This can waste ink and cause a paper jam.)

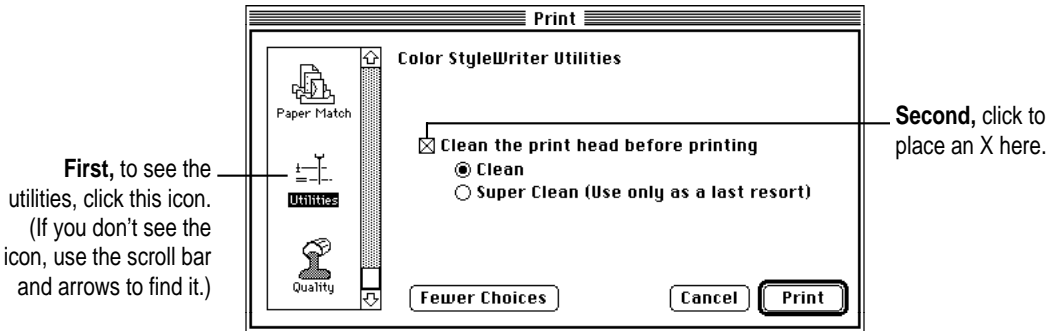
If you are still not happy with the quality, try using the regular (non-GX) QuickDraw printing software and see which results you prefer. See "If You Choose Not to Use QuickDraw GX Printing" at the end of this appendix.

Note: If you have a color PowerBook computer, open the ColorSync control panel and make sure the system profile is correct for your PowerBook. If it's not, choose Set System Profile from the pop-up menu and select the correct profile.

Cleaning the print head

To clean the print head, follow these steps:

- 1 When you are about to print a document, click **Utilities** in the expanded **Print** dialog box.



- 2 When you are satisfied with the settings, click **Print**.

If necessary, the printer turns itself on and, after a few moments, begins printing your document. Don't open the printer cover while the document is printing. (This can waste ink and cause a paper jam.)

Note: After the printer cleans the print head and prints your document, the cleaning option is automatically turned off. You don't have to turn it off before printing again.

A printing shortcut

If you have one or more printer icons on your desktop, you can print a document by dragging its icon to the printer.

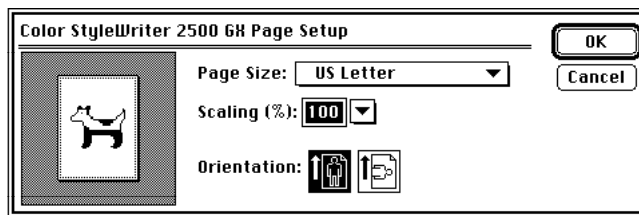
For instructions on creating a desktop printer, see "Telling Your Computer to Use the Color StyleWriter 2500 with QuickDraw GX" at the beginning of this appendix.

If you choose not to use QuickDraw GX printing

If you're unhappy with the quality of color printing on your Color StyleWriter 2500, try turning off the QuickDraw GX printing software and using the regular QuickDraw printing software. You can decide which you prefer.

1 Open a program that's not GX-savvy.

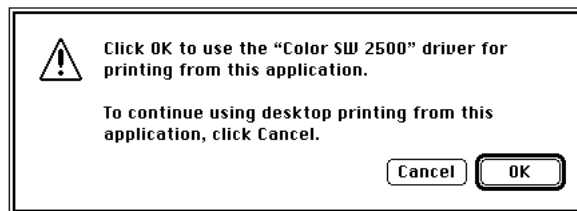
If you're not sure whether the program is GX-savvy, choose Page Setup from the File menu. If the dialog box that appears looks like the one below, the program is not able to take full advantage of QuickDraw GX.



The GX-savvy version of the Page Setup dialog box contains additional features.

2 Choose Turn Desktop Printing Off from the Apple () menu.

A message appears:



Note: If the message doesn't mention the Color SW 2500 driver, someone may have removed it from your Macintosh. Use the Custom Install option in the Installer to install the driver. (See "Using the Custom Installer to Solve Installation Problems" in the section "Installation Is Unsuccessful" in Chapter 5.)

3 Click OK.

Now your Color StyleWriter 2500 will use the regular QuickDraw printing software. If you want to go back to using the QuickDraw GX printing software, repeat this process, but in step 2 choose Turn Desktop Printing On.



Appendix F Removing the Desktop Printing Software



The printing software that you installed in Chapter 1 requires that you have at least one printer icon on your desktop. If you don't want to use the desktop printing software, you must remove the desktop printing software, as shown in these steps:

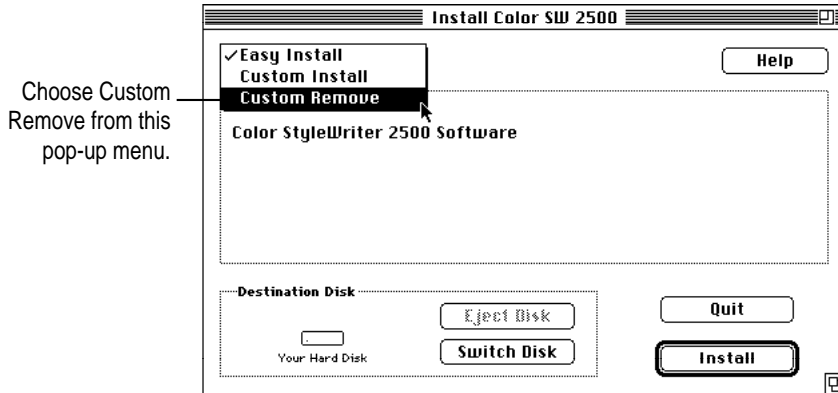
Before you begin Find the disks that came with the Color StyleWriter 2500.

- 1 Insert *Color StyleWriter 2500 Disk 1* into a floppy disk drive.

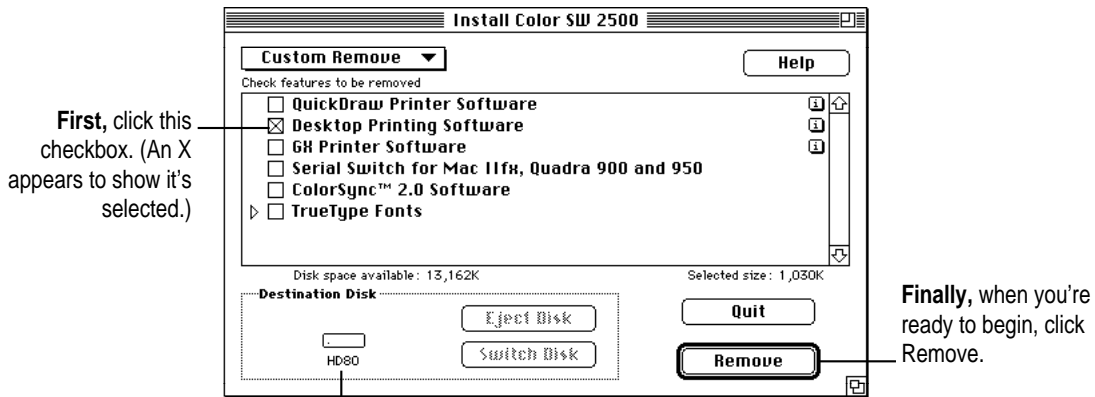
If necessary, open the disk icon.

- 2 To start the Installer program, double-click its icon.
- 3 In the Welcome dialog box that appears, click Continue.

4 In the Installer dialog box, choose Custom Remove.



5 In the Custom Remove dialog box, click the Desktop Printing Software checkbox.



Second, make sure the disk named here is the one from which you want to remove the desktop printing software. (If not, click Switch Disk until the correct name appears.)

- 6 When you see a message on your screen, follow the directions and insert the next disk.**

The Installer ejects disks and asks you to insert others. Keep following the instructions on the screen until the process is complete.

- 7 When you see a message reporting that the process was successful, click Restart.**

The Installer restarts your Macintosh. When the computer restarts, the desktop printer icons appear with an X on them.

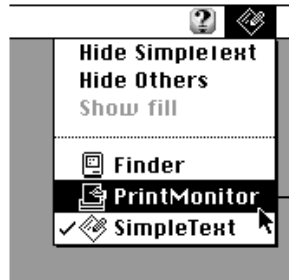
- 8 After the computer restarts, drag your old desktop printer icons to the Trash.**

- 9 Read the next section to learn how to use the PrintMonitor to monitor and control print requests.**

Monitoring and controlling print requests without desktop printers

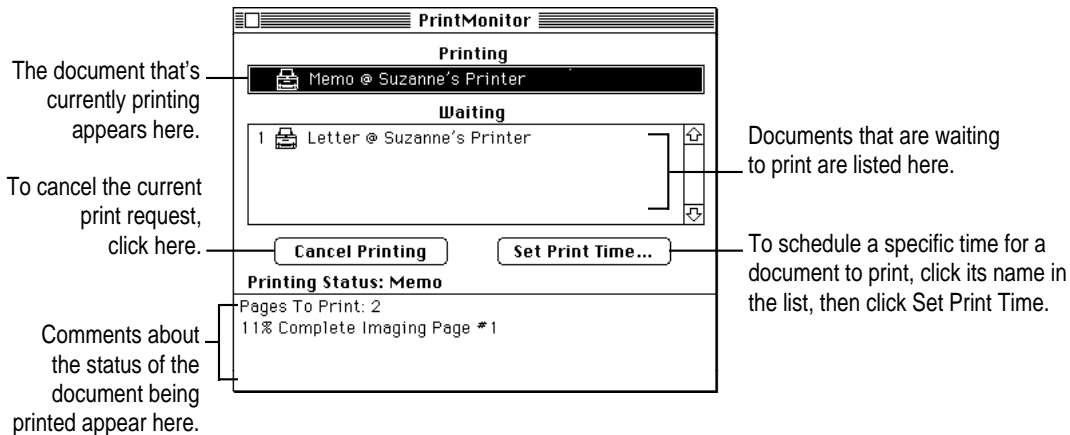
If you don't have desktop printers, you must use the PrintMonitor program to monitor and control background printing.

- 1 While your document is printing, choose PrintMonitor from the Application menu at the far right of the menu bar.



PrintMonitor is available only when background printing is on. If you turn off background printing, messages on your screen keep you informed of printing status.

- 2 In the PrintMonitor dialog box, review the status of documents that are printing (and make any changes you want).



You can remove a document that is waiting to print by clicking its name, then clicking the Remove From List button that appears.

- 3 When you finish, click the PrintMonitor close box.

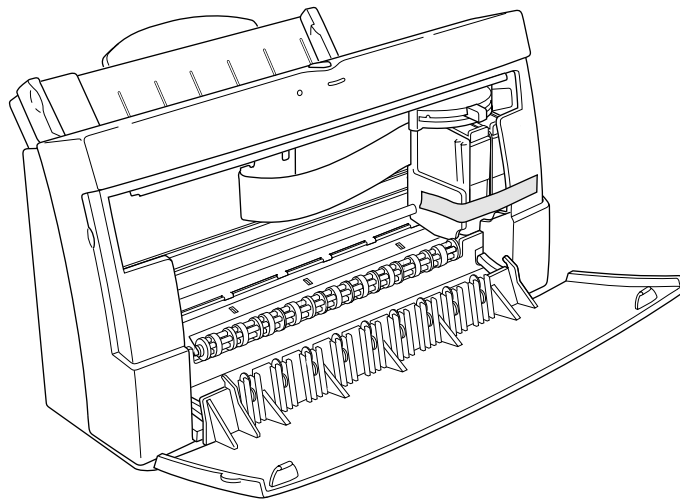
Appendix G

Packing and Moving the Printer



If you need to move the Color StyleWriter 2500 printer a long distance, follow these steps.

- 1** Turn off the printer and unplug it.
- 2** Remove the power cord and serial cable.
- 3** Open the printer's front cover.
- 4** Leave the ink cartridge in the printer, and apply a piece of tape to hold the cartridge in place.



- 5 Close the cover.**
- 6 Remove any paper from the sheet feeder.**
- 7 Push the paper support and output tray back inside the printer.**
- 8 Repack the printer in its original packing material.**

When the printer arrives at its new location, unpack it and set it up as described in Chapter 1.





Index

•••••

A

- A4 paper 13, 91
- AC power adapter 3, 92
- Adobe PostScript font icon 98
- Adobe Type Manager 79, 98, 100, 106
- alcohol-based or ammonia-based cleaners 2, 63
- alias for a desktop printer icon, creating 40
- Align Top Left watermark scaling option 35, 36
- Apple-authorized dealer/service provider
 - obtaining ink cartridges and supplies 58
 - purchasing new system software or memory 15
 - repair assistance 65
 - waste ink container is full 77
- Apple classic fonts 107
- Apple menu, Turn Desktop Printing Off 123
- Apple part numbers list 93–94
- Apple System/Peripheral-8 cable 3, 90, 93
- AppleTalk network, sharing the printer 44–46
- Application menu, PrintMonitor command 128
- audio alert of print completion 30

B

- background printing
 - low memory and 78, 79
 - monitoring and controlling 42–43
 - PrintMonitor and 128
 - QuickDraw GX and 115
 - turning on or off 41
 - working with 28, 31
- back-print film
 - backwards printing and 81
 - loading into the sheet feeder 26, 51, 75
 - print quality setting for 120
 - tips for using 51
- Best print quality option 30, 52, 119, 120
- bitmapped font icon 97
- bitmapped fonts
 - Apple classic fonts 107
 - described 97
 - PostScript and 98
 - TrueType and 99–100, 106
- Bitstream PostScript font icon 98
- black ink cartridge
 - printing speed and 53
 - vs. color ink cartridge 4
 - when to replace 58
- borders around mini pages 29, 37

C

cables

- Apple System/Peripheral-8 3, 90, 93
- checking connections 70
- LocalTalk 11
- network 11
- serial 11

“carbonless carbon” paper 49, 82

carrier

- handling of 7–8, 10
- replacing the ink cartridge and 59, 61

Centered watermark scaling option
35, 36

changing the order of items to print,
background printing and 43

Chooser

- changing the default printer 39
- selecting the printer 17, 28
- setting up the printer for network use
45–46
- setting up the printer for QuickDraw
GX 115–117
- turning background printing on or
off 41
- user instructions for a shared
printer 47

Chooser dialog box 17, 115–117

CIE color standard 113

cleaning

- the printer 2, 63, 87
- the print head 30, 84–85, 122

CMYK color system 111

coated paper 26, 50, 119

color ink cartridge

- vs. black ink cartridge 4
- when to replace 58

color matching, turning on 32–33

color options, adjusting 30, 32–33

Color Options dialog box 32–33, 52

color printing

- quirks 33
- troubleshooting 82, 84

ColorShare 42, 44, 85

Color StyleWriter 2500 Disk I 14,
68, 125

Color StyleWriter 2500 icon 16, 17,
31, 66

Color StyleWriter 2500 Log file 46

Color SW 2500-Troubleshooting file
19–20. *See also* test page

ColorSync

- control panel 32, 113, 121
- described 111–113
- profiles 32, 112, 113, 121
- turning on 32–33, 52

columns, printing, troubleshooting 81

connecting the printer

- to use on a LocalTalk or EtherTalk
network 48
- to use on an AppleTalk network
44–46
- to use with QuickDraw GX 115–117
- to your Macintosh 11

Connect via pop-up menu (Chooser
dialog box) 115–116

controlling print requests. *See* monitoring
and controlling print requests

control panels

- ColorSync System Profile 32,
113, 121
- Monitors 113

copies, selecting number to print 30

cost of printing, reducing 53

creating a desktop printer icon 40

Custom Install dialog box 69

Custom Install option 16, 68–69

Custom Remove dialog box 126

Custom Remove option 126–127

D

- damaged paper 49, 74–75, 82
- default desktop printer icon 38, 40
- default printer, changing 38–39
- deleting a print request, background printing and 42
- density of watermarks 35, 36
- desktop printer
 - creating 17, 40, 116
 - formatting a document for, QuickDraw GX 118
- desktop printer icons
 - appearance after removing desktop printer software 127
 - creating, throwing away, or manipulating 40
 - examples of 16, 31
 - troubleshooting 71
- desktop printing 31
 - low memory and 78
 - turning off QuickDraw GX 123
- desktop printing software, removing 125–127
- Desktop PrintMonitor 79
- dialog boxes
 - Chooser 17, 115–117
 - Color Options 32–33, 52
 - Custom Install 69
 - Custom Remove 126
 - Installer 15, 68, 126
 - Page Setup 19, 29, 37, 80, 117
 - Page Setup, expanded QuickDraw GX version 118
 - Print 20, 30, 52, 85, 119
 - Print, expanded QuickDraw GX version 120–122
 - PrintMonitor 128
 - Setup 45
 - Utilities 85
 - Watermark Options 35
- dimensions of printer 91
- disabled (X) desktop printer icon 40, 71, 127

- disconnecting the printer. *See* unplugging the printer
- disks, locking 14
- display fonts 106
- distorted print output, troubleshooting 87
- document icon 31
- downloadable fonts 108
- Draft print quality option 30, 53, 119, 120

E

- electromagnetic interference 4
- energy-saving feature 6
- engine specifications of the printer 89
- enlarging the printed image. *See* scaling
- envelope icon 24, 25
- envelopes
 - feed improperly 74–75
 - formatting the text for 26, 27
 - loading into the sheet feeder 24, 75
 - setting the paper selectors for 24, 25
 - types to use 26, 77, 90, 91
- environment specifications 92
- erasable typing paper 49, 82
- error light 6, 21, 72
- error messages 70, 77
- EtherTalk network, connecting the printer to 48
- extensions, turning off 14
- external paper selector lever 13, 24

F

- features of the printer, overview ix
- File menu
 - Page Setup command 19, 23, 29, 34–37, 117–118
 - Print command 20, 27–28, 30–33, 38, 119–122
 - Quit command 20
 - Save command 33

- filling the sheet feeder. *See* loading the sheet feeder
- fixed-size fonts 97
- folders
 - Fonts 67, 102, 106
 - font suitcases 103–104
 - Printing Prefs 37, 46, 81
- Fontek PostScript font icon 98
- font families 109–110
- fonts
 - Apple classic fonts 107
 - bitmapped 97, 99–100, 106
 - corrupted, resolving installation problems 66–69
 - displaying in the Fonts menu 106
 - downloadable 108
 - Geneva appears as a substitute font 107
 - how the Macintosh looks for 101
 - installing 14
 - list of 109–110
 - low memory and 107
 - making purchasing decisions 106
 - naming 100
 - organizing in suitcases 103–104
 - PostScript 98, 100, 106
 - QuickDraw GX 98
 - search order 101
 - storing on the computer 102–104
 - styles for 105
 - supported by the printer 90, 95, 109–110
 - TrueType 96–97, 99–100, 106
 - used for display 106
 - viewing on-screen 96–97
- Fonts folder 102, 106
 - removing items from 67
- Fonts menu 106
- font styles 105
- font substitution 107, 108
- font suitcases 102–104
- four-color ink cartridge. *See* color ink cartridge
- future print time, setting 43

G

- Get Info command 78
- glossy paper 26, 50, 82, 120
- guide. *See* paper guide

H

- halftoning method, selecting 32, 38, 52, 121
- hardware requirements x
- high-performance black ink cartridge. *See* black ink cartridge
- holding a print request, background printing and 43
- horizontal orientation. *See* landscape orientation
- horizontal white lines appear on the printed page, troubleshooting 84
- humidity range for the printer 92

I

- icons
 - bitmapped font 97
 - Color StyleWriter 2500 16, 17, 31, 66
 - Color SW 2500-Troubleshooting file 19
 - default desktop printer 38, 40
 - desktop printer 16, 31, 40, 71, 127
 - disabled (X) desktop printer 40, 71, 127
 - document 31
 - envelope 24, 25
 - modem port 11, 18
 - paper 24, 25
 - PostScript font manufacturers 98
 - printer error 40
 - printer port 11, 18
 - printing 40
 - stopped print queue 40
- image print option
 - low memory and 78
 - selecting 30, 119, 121

- ink
 - checking if the printer is out of ink 76
 - reducing the amount used 53
 - smears when rubbed,
 - troubleshooting 83
 - ink cartridges
 - extending the life of 88
 - installing 7–10
 - part numbers for 93
 - preventing from drying out 4, 6, 62
 - replacing 58–61
 - storing 4, 62
 - switching 53
 - troubleshooting 76
 - unpacking 3
 - ink cartridge storage case 3, 4, 62
 - ink tanks
 - extending the life of 88
 - part numbers for 93
 - replacing 55–57
 - safety instructions for 66
 - troubleshooting 76
 - ink waste container 77
 - inserting paper into the sheet feeder. *See*
 - loading the sheet feeder
 - installation problems, troubleshooting 66–69
 - Installer dialog box 15, 68, 126
 - Installer program 14–16, 68–69, 125–127
 - installing
 - fonts 14
 - ink cartridges 7–10
 - printer software 14–16, 68–69
 - QuickDraw GX software 14
 - interface specifications of the printer 90
 - interference with television and radio reception vi
 - internal modem on PowerBook
 - computers 11, 17, 18, 70
 - internal paper selector lever 12, 25, 87
- J**
- jagged edges on printed output 96, 97
 - jammed or damaged paper, removing 73, 75
- K**
- Key Caps desk accessory 97
- L**
- labels 26
 - landscape orientation
 - low memory and 78
 - setting 29, 117, 118
 - layout, adjusting 29
 - Layout pop-up menu (Page Setup dialog box) 37
 - legal-size paper 13, 25
 - letterhead paper 24
 - letter-size paper 13, 27–28
 - lights on the printer 6, 21, 72
 - liquid cleaners 63
 - liquid spills in the printer 2
 - loading the sheet feeder
 - with back-print film or transparencies 26, 51, 75
 - basic instructions 12–13, 24–25
 - with envelopes 24, 26, 75
 - with labels 2, 26
 - with various kinds of paper 26, 49–50
 - LocalTalk cable 11
 - LocalTalk network, connecting the printer to 48
 - location for the printer, choosing 4
 - locking disks 14
 - log file for printer usage 46

M

- maintenance tasks. *See also* safety instructions
 - cleaning the printer 2, 63, 87
 - replacing ink tanks 55–57
 - replacing the ink cartridge 58–61
 - storing a second ink cartridge 62
- Matching Method pop-up menu (Color Options dialog box) 33
- memory
 - low memory indications and suggestions 78–79
 - required for the printer x
 - virtual memory 4, 79
- messages on-screen 70, 77
- mini pages (2 or 4), printing 29, 37
- modem port 11, 17, 18
- moisture exposure to the printer 2
- monitoring and controlling print requests
 - with background printing on 42–43
 - on a network printer 47
 - without desktop printers 128
- Monitors control panel 113
- moving a desktop printer icon 40
- moving a print request to another printer, background printing and 43
- moving the printer a long distance 129–130
- multipart forms 49, 82

N

- naming
 - fonts 100
 - font suitcases 104
- network cable 11
- networks
 - AppleTalk 44–46
 - LocalTalk or EtherTalk 48
- network zones 47, 116
- non-standard documents, printing 28–31

- Normal print quality option 30, 53, 119, 120
- notification of print completion, selecting 30
- nozzle test pattern, interpreting 22, 86
- number of copies to print, selecting 30

O

- opening the printer 7, 25, 56, 59, 87
- operating environment specifications 92
- orientation
 - low memory and 78
 - setting 29, 117, 118
- output tray, opening 13, 25

P

- packing the printer 129–130
- page breaks, change unexpectedly, troubleshooting 80
- Page Setup command (File menu) 19, 23, 29, 34–37, 117–118
- Page Setup dialog box 19, 29, 37, 80, 117
 - expanded QuickDraw GX version 118
- page setup options. *See also* print options setting 23, 29, 34–35, 37, 117–118
- page size, adjusting 29, 117
- pages to print, selecting 30
- paper. *See also* print materials
 - jammed or feeding improperly 73–75
 - loading into the sheet feeder 12–13, 24–25, 75
 - saving 37
 - sizes supported 91
 - types not to use 49, 82
 - types to use 26, 49–50, 77, 82, 90
- paper guide, adjusting 13, 24, 75
- paper icon 24, 25
- paper-matching feature, QuickDraw GX 120

- paper selector lever
 - external 13, 24
 - internal 25, 87
- paper support, extending 13, 24
- paper type, indicating 30, 77, 118, 119, 121
- part numbers list 93–94
- password for network printer usage 45, 47
- Pattern halftoning option 32, 38, 83
- PICT/PICT2 format files, watermarks and 36, 81
- pictures do not print, troubleshooting 80
- pixels 96
- plain paper
 - tips for using 49
 - troubleshooting 82, 83
 - weight recommended 26, 49, 90
- platen, cleaning 63, 87
- plugging in the printer 5
- portrait orientation
 - low memory and 78
 - printing in 27
 - setting 29, 117, 118
- ports
 - changing the selection 70
 - modem and printer 11, 17, 18
 - serial, PowerBook computers 18
- PostScript fonts
 - described 98
 - downloadable 108
 - TrueType and 100, 106
- PostScript page description language 79, 80, 98
- power adapter 3, 92
- PowerBook computers
 - internal modems and 11, 17, 18, 70
 - selecting the correct system profile for ColorSync 32, 121
- power button 6, 21, 72
- power consumption specifications 92
- power light 6, 21, 72
- Power Macintosh computers, virtual memory and 4
- power requirements for AC power adapter 92
- power-saving feature 6
- power strip, turning off 6
- precautions. *See* maintenance tasks; safety instructions
- premium coated/premium plus coated paper 26, 50, 90
- printable area 91
- Print command (File menu) 20, 27–28, 30–33, 38, 119–122
- Print dialog box 20, 30, 52, 85, 119
 - expanded QuickDraw GX version 120–122
- printer error icon 40
- printer log file 46
- printer port 11, 17, 18
- Printer Profile pop-up menu (Color Options dialog box) 33
- printer software
 - installing 14–16, 68–69
 - removing 125–127
- print head
 - cleaning 30, 84–85, 122
 - handling of 8–9, 59
 - preventing from drying out 4, 6, 62
 - troubleshooting 83, 84, 86
- printing. *See also* background printing; desktop printing; troubleshooting
 - adjusting color options 30, 32–33
 - back-print film 26, 51, 75, 81, 120
 - borders around mini pages 29, 37
 - color printing quirks 33
 - the Color SW 2500-Troubleshooting file 19–20
 - envelopes 24, 25, 26, 27, 74–75
 - labels 26
 - in landscape orientation 29, 117
 - legal-size paper 13, 25
 - letterhead paper 24

- mini pages (2 or 4) 29, 37
 - non-standard documents 28–31
 - on a shared printer 47
 - on various paper finishes 26
 - in portrait orientation 27–28, 29, 117
 - previously formatted documents 31
 - with QuickDraw GX 115–122
 - reducing cost of 53
 - scaled documents 29, 34, 117, 118
 - selected pages of a document 30
 - several documents at once 31
 - specific number of copies 30
 - standard documents 27–28
 - a test page 19–20, 56, 59, 84, 86
 - three-hole punched paper 24
 - transparencies 26, 51, 75, 120
 - troubleshooting 69–88
 - U.S. letter-size paper 27–28
 - utilities for 30
 - watermark images 29, 34–37
 - while using your computer 41–43
 - without leaving the Finder 31
 - printing icon 40
 - Printing menu, Set Default Printer command 39
 - Printing Prefs folder 37, 46, 81
 - print materials. *See also* back-print film; envelopes; paper; transparencies
 - part numbers for 93
 - standard and non-standard, printing 27–31
 - tips for choosing 49–51
 - types to use 24, 26, 90–91
 - PrintMonitor command (Application menu) 128
 - PrintMonitor dialog box 128
 - PrintMonitor program
 - changes to printing software and x using if you don't have desktop printers 128
 - print nozzles, checking 21–22
 - print options. *See also* page setup options
 - setting 30, 32–33, 39, 119–122
 - print quality
 - for greater speed 53
 - QuickDraw GX printing and 119, 120, 121
 - selecting 30, 52
 - troubleshooting 82–87
 - print queue
 - removing requests from 79
 - working with 42–43
 - print requests
 - deleting multiple requests for a document 70
 - monitoring and controlling 42–43, 47, 128
 - removing 79, 128
 - scheduling 120, 128
 - print time, setting, background printing and 43
 - profiles, ColorSync 32, 112, 113, 121
 - proportional space numerals 106
- Q**
- quality options. *See* print quality
 - QuickDraw GX
 - background printing and 41
 - cleaning the print head 122
 - expanded Page Setup dialog box 118
 - expanded Print dialog box 120–122
 - font features 98
 - installing 14
 - network printing and 44, 70
 - page setup definition 117–118
 - printing with 119–122
 - setting up the printer for use with 115–117
 - turning off 123
 - typographic features of 106
 - Quit command (File menu) 20

R

- radio and television reception,
 - interference with vi
- RAM. *See* memory
- Read Me file 32
- reducing the printed image. *See* scaling
- removing
 - desktop printing software 125–127
 - jammed or damaged paper 73, 75
- renaming
 - a desktop printer icon 40
 - a network printer 48
- repacking the printer 129–130
- replacing
 - the ink cartridge 58–61
 - ink tanks 55–57
- resetting the printer 71
- resolution
 - of bitmapped fonts 7
 - specifications of the printer 89
- Restart command (Special menu) 14
- restarting the computer with extensions
 - turned off 14
- RGB color system 111
- rollers, cleaning 63, 87
- rotated text, troubleshooting 79

S

- safety instructions 1–2, 6, 66. *See also*
 - maintenance tasks
- Save command (File menu) 33
- saving
 - energy 6
 - paper 37
- scalable fonts 96, 97, 100
- scaling
 - adjusting 29, 34, 117, 118
 - of watermarks 35, 36
- Scatter halftoning option 32, 38, 52
- screen fonts 97
- serial cable 11

- serial port on PowerBook computers 18
- Set Default Printer command (Printing menu) 39
- Setup dialog box 45
- shared printers
 - cleaning the print head and 85
 - print requests to 42
 - setting up 44–48
 - troubleshooting 70, 79
 - user instructions for 47
- sheet feeder
 - capacity of 12, 26, 74, 90
 - loading 12–13, 24–26, 49–51
 - troubleshooting 73–75
 - unpacking 3
- size of printer 91
- software disks, unpacking 3
- software requirements x
- sorting items waiting to print,
 - background printing and 43
- Special menu, Restart command 14
- speed of printing, increasing 53
- stains on printed pages,
 - troubleshooting 87
- standard documents, printing 27–28
- stapled paper 49
- stopped print queue icon 40
- stopping items temporarily from printing,
 - background printing and 43
- storage case for ink cartridge 3, 4, 62
- storage environment specifications 92
- Stretch to Fit watermark scaling option 35, 36
- stripes appear on the printed page,
 - troubleshooting 84
- styles for fonts 105
- suitcases for fonts 102–104
- swash characters 106
- switching between printers 38–39
- system profile, ColorSync and 32, 112, 113, 121
- system requirements x

T

- technical specifications of the printer 89–91
- television and radio reception, interference with vi
- temperature range for the printer 92
- test page, printing 19–20, 56, 59, 84, 86
- test pattern for print nozzles, interpreting 22, 86
- three-hole punched paper 24
- throwing away a desktop printer icon 40
- transparencies
 - loading into the sheet feeder 26, 51, 75
 - print quality setting for 120
 - tips for using 51
- troubleshooting
 - cable connections 70
 - color printing quirks 33
 - colors don't look right 84
 - colors skip or streak at the bottom of the page 82
 - Color SW 2500 icon doesn't appear in the Chooser 66
 - columns are misaligned when printed 81
 - computer crashes while attempting to print 69
 - corrupted fonts 66–69
 - deleting multiple print requests 70
 - error light indicates a problem 72
 - horizontal white lines appear on the printed page 84
 - ink cartridges and tanks run out of ink too quickly 76, 88
 - ink smears when rubbed 83
 - installation is unsuccessful 66–69
 - jagged text 79
 - lines fade or break up 83
 - low memory indications and suggestions 78–79
 - message states that no Color StyleWriter 2500 is connected 70–71
 - nothing prints 70–71, 76
 - nozzles in print head 83, 84, 86
 - page breaks change unexpectedly 80
 - paper is jammed or feeds improperly 73–75
 - a particular document won't print 76
 - pictures do not print 80
 - port selection 70
 - PowerBook computers 70, 71
 - power light indicates a problem 72
 - printer seems slow 73
 - printer software installation 16, 70
 - printing appears on only part of the paper 84
 - printing is backwards 81
 - printing is off center 80
 - printing is smeared, blurred, or smudged 83
 - printing is too light or too dark 83
 - print quality 82–87
 - resetting the printer 71
 - rotated text prints jagged 79
 - shared printers 70, 79
 - stains on printed pages 87
 - stripes appear on the printed page 84
 - text prints in Geneva font 79
 - watermark problems 81
 - wavy or distorted print output 87
- TrueType fonts
 - bitmapped fonts and 99–100, 106
 - described 96–97
 - downloadable 108
 - PostScript fonts and 100, 106
- Turn Desktop Printing Off (Apple menu) 123
- turning the printer on and off 6

U

- unpacking the printer 3–4
- unplugging the printer 2, 5, 6, 63, 66
- urgent print requests, background printing and 43
- U.S. letter-size paper 13, 27–28
- Utilities dialog box 85
- utilities options to clean the print head 30, 85, 122

V

- vertical orientation. *See* portrait orientation
- virtual memory
 - low memory condition and 79
 - Power Macintosh users and 4
- visual alert of print completion 30

W, X, Y

- warranty on the printer 55, 65
- waste ink container 77
- Watermark Options dialog box 35
- watermarks
 - creating your own 36–37
 - low memory and 78
 - scaling 35, 36
 - specifying 29, 34–35
 - troubleshooting 81
- wavy print output, troubleshooting 87
- weight of printer 91
- weight recommended for paper 26, 49, 82, 90
- white lines appear on the printed page, troubleshooting 84
- wrinkled paper 49

Z

- zones, network 47, 116



Color StyleWriter 2500

Setting up, connecting, and using your printer

 Apple Computer, Inc.

© 1996 Apple Computer, Inc. All rights reserved.

Under the copyright laws, this manual may not be copied, in whole or in part, without the written consent of Apple. Your rights to the software are governed by the accompanying software license agreement.

The Apple logo is a trademark of Apple Computer, Inc., registered in the U.S. and other countries. Use of the “keyboard” Apple logo (Option-Shift-K) for commercial purposes without the prior written consent of Apple may constitute trademark infringement and unfair competition in violation of federal and state laws.

Every effort has been made to ensure that the information in this manual is accurate. Apple is not responsible for printing or clerical errors.

Apple Computer, Inc.
1 Infinite Loop
Cupertino, CA 95014-2084
(408) 996-1010

Apple, the Apple logo, AppleShare, AppleTalk, ColorShare, ColorSync, EtherTalk, LaserWriter, LocalTalk, Macintosh, Mac X25, New York, PowerBook, QuickTake, StyleWriter, TokenTalk, TrueType, and Zeal are trademarks of Apple Computer, Inc., registered in the U.S. and other countries.

Chicago, the Dogcow logo, Finder, Geneva, Mac, Monaco, and QuickDraw are trademarks of Apple Computer, Inc.

Adobe, Adobe Illustrator, Adobe Photoshop, Adobe Type Manager, PostScript, and SuperPaint are trademarks of Adobe Systems Incorporated or its subsidiaries and may be registered in certain jurisdictions.

Classic is a registered trademark licensed to Apple Computer, Inc.

Helvetica, Palatino, and Times are registered trademarks of Linotype-Hell AG and/or its subsidiaries.

ITC Avant Garde, ITC Bookman, ITC Garamond, ITC Lubalin Graph, ITC Machine, ITC Zapf Chancery, and ITC Zapf Dingbats are registered trademarks of International Typeface Corporation.

Simultaneously published in the United States and Canada.

Mention of third-party products is for informational purposes only and constitutes neither an endorsement nor a recommendation. Apple assumes no responsibility with regard to the performance or use of these products.



Contents

Communications regulation information vi

Welcome ix

1 Setting Up Your Printer 1

Important safety instructions 1

Unpacking the printer 3

Power Macintosh users and Virtual Memory 4

Plugging in the printer 5

Turning the printer on and off 6

Installing the ink cartridge 7

Connecting the printer to your Macintosh 11

Loading paper into the sheet feeder 12

Installing your printer software 14

Telling your computer to use the Color StyleWriter 2500 17

Printing a document to make sure everything's working 19

Checking the print nozzles 21

What's next? 22

2 Printing 23

- Planning documents with the Color StyleWriter 2500 in mind 23
- Loading the sheet feeder 24
- Printing a document 27
- Adjusting color options 32
- Creating special effects on the Color StyleWriter 2500 34
- Switching between printers 38
- Creating, throwing away, and manipulating desktop printer icons 40
- Determining the status of a printer by looking at its icon 40
- Printing while you use your computer 41
- Monitoring and controlling background printing 42
- Sharing your printer with other users 44
- Printing on a shared Color StyleWriter 2500 47
- Connecting a Color StyleWriter 2500 to a LocalTalk or
EtherTalk network 48

3 Tips on Paper, Quality, Speed, and Cost 49

- Choosing print materials 49
- Quality 52
- Speed 53
- Cost 53

4 Maintaining Your Printer 55

- Replacing ink tanks in the four-color ink cartridge 55
- Replacing the ink cartridge 58
- Storing the ink cartridge you aren't using 62
- Cleaning the outside of the printer 63
- Cleaning the inside of the printer 63

5	Troubleshooting	65
	Safety precautions	66
	The Chooser doesn't show the Color SW 2500 icon	66
	Installation is unsuccessful	66
	The computer crashes while attempting to print	69
	The computer doesn't recognize the Color StyleWriter 2500	70
	Desktop printer icon problems	71
	A PowerBook has trouble printing to the Color StyleWriter 2500	71
	The lights indicate a problem	72
	The printer seems slow	73
	Paper is jammed	73
	More than one piece of paper passes through the printer at a time	74
	Paper or envelopes feed improperly	74
	The Color StyleWriter 2500 won't print a particular document	76
	The printer acts as if it's working, but nothing is printed on the page	76
	Messages appear on your computer screen	77
	Memory is low	78
	Documents did not print as expected	79
	Print quality is poor	82
	Ink tanks and cartridges run out of ink too quickly	88
Appendix A	Technical Information	89
Appendix B	Using Fonts With the Color StyleWriter 2500	95
Appendix C	Font List	109
Appendix D	Working With ColorSync	111
Appendix E	Printing with QuickDraw GX	115
Appendix F	Removing the Desktop Printing Software	125
Appendix G	Packing and Moving the Printer	129
	Index	131

Communications regulation information

FCC statement

This equipment has been tested and found to comply with the limits for a Class B digital device in accordance with the specifications in Part 15 of FCC rules. See instructions if interference to radio or television reception is suspected.

Radio and television interference

The equipment described in this manual generates, uses, and can radiate radio-frequency energy. If it is not installed and used properly—that is, in strict accordance with Apple’s instructions—it may cause interference with radio and television reception.

This equipment has been tested and found to comply with the limits for a Class B digital device in accordance with the specifications in Part 15 of FCC rules. These specifications are designed to provide reasonable protection against such interference in a residential installation. However, there is no guarantee that interference will not occur in a particular installation.

You can determine whether your computer system is causing interference by turning it off. If the interference stops, it was probably caused by the computer or one of the peripheral devices.

If your computer system does cause interference to radio or television reception, try to correct the interference by using one or more of the following measures:

- Turn the television or radio antenna until the interference stops.
- Move the computer to one side or the other of the television or radio.
- Move the computer farther away from the television or radio.
- Plug the computer into an outlet that is on a different circuit from the television or radio. (That is, make certain the computer and the television or radio are on circuits controlled by different circuit breakers or fuses.)

If necessary, consult an Apple-authorized service provider or Apple. See the service and support information that came with your Apple product. Or, consult an experienced radio/television technician for additional suggestions.

IMPORTANT Changes or modifications to this product not authorized by Apple Computer, Inc., could void the FCC Certification and negate your authority to operate the product.

This product was tested for FCC compliance under conditions that included the use of Apple peripheral devices and Apple shielded cables and connectors between system components. It is important that you use Apple peripheral devices and shielded cables and connectors between system components to reduce the possibility of causing interference to radios, television sets, and other electronic devices. You can obtain Apple peripheral devices and the proper shielded cables and connectors through an Apple-authorized dealer. For non-Apple peripheral devices, contact the manufacturer or dealer for assistance.

DOC statement

DOC Class B Compliance This digital apparatus does not exceed the Class B limits for radio noise emissions from digital apparatus as set out in the interference-causing equipment standard entitled “Digital Apparatus,” ICES-003 of the Department of Communications.

Observation des normes—Classe B Cet appareil numérique respecte les limites de bruits radioélectriques applicables aux appareils numériques de Classe B prescrites dans la norme sur le matériel brouilleur: “Appareils Numériques”, NMB-003 édictée par le ministre des Communications.

VCCI statement

情報処理装置等電波障害自主規制について

この装置は、第二種情報装置（住宅地域又はその隣接した地域において使用されるべき情報装置）で住宅地域での電波障害防止を目的とした情報処理装置等電波障害自主規制協議会（VCCI）基準に適合しております。

しかし、本装置をラジオ、テレビジョン受信機に近接してご使用になると、受信障害の原因となることがあります。

取扱説明書に従って正しい取り扱いをしてください。



Welcome



Congratulations on your purchase of the Color StyleWriter 2500 printer. This book describes how to set up the printer and how to use it.

Main features of the Color StyleWriter 2500

The Color StyleWriter 2500 works with most Macintosh computers, including computers using QuickDraw GX.

- The Color StyleWriter 2500 quietly prints high-quality color graphics and text on a variety of materials, including plain paper.
- An energy conservation feature turns off the printer when you aren't using it and turns it on when needed.
- The automatic sheet feeder holds up to 100 sheets of paper or up to 15 envelopes.
- Desktop printing makes it easy to switch printers and monitor your print requests.
- ColorShare (installed with the printer software) allows you to share the printer with anyone on your AppleTalk network (including people using LocalTalk, EtherTalk, or TokenTalk).
- 64 available TrueType (outline) fonts print smoothly in a variety of sizes.

Changes to the printing software that affect other printers

If you have another printer that uses Apple's PrintMonitor application program, including all LaserWriter and all StyleWriter printers, please note the following changes:

- Your new printing software includes a feature called desktop printing, which gives you new ways to print from the desktop. For details, see "Desktop Printing" in the "Printing a Document" section in Chapter 2.
- You also use the desktop printing features (instead of Apple's PrintMonitor program) to monitor background printing. See "Monitoring and Controlling Background Printing" in Chapter 2.

System requirements

To install the printer software and use the Color StyleWriter 2500 printer with your Macintosh computer, you need

- a Macintosh with a 68020 or higher central processing unit (CPU), any Macintosh except a Macintosh Plus, SE, Classic®, Portable, or PowerBook 100
- Macintosh Operating System (Mac OS) version 7.1 or a later version
- at least 4 megabytes of random-access memory (RAM) 5 megabytes is recommended
- some space available on your hard disk (during installation the Installer tells you if you need more disk space)

The Installer program that comes with the Color StyleWriter 2500 automatically checks whether your computer meets these requirements. Chapter 1 explains how to use the Installer program.